



LDG

9 GREAT PULTENEY STREET
Soho



9 Great Pulteney Street







ADDRESS	POSTCODE	LOCAL AUTHORITY	RENT
9 Great Pulteney Street, Soho W1F 9NL		Westminster	£895 Per Week

THE SPACE

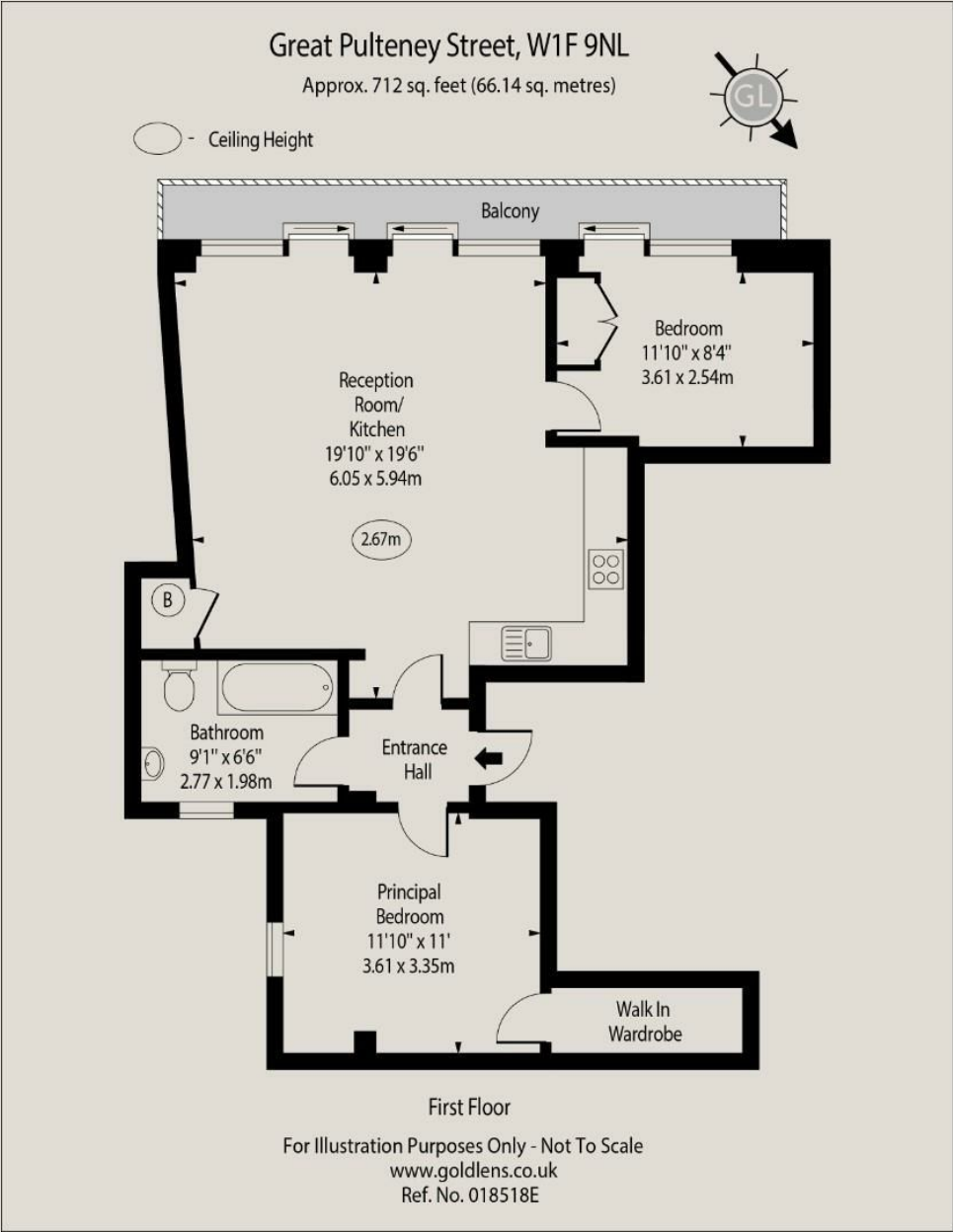
A modern two double bedroom apartment in the heart of Soho. The apartment has a good size open-plan kitchen reception room, the reception room has floor-to-ceiling windows with a sliding French door onto the private balcony, there are also two double bedrooms with built-in storage and the second bedroom which leads out onto the balcony, and a bathroom with bath and shower. The apartment is furnished beautifully and has wooden flooring throughout.

Great Pulteney Street is a quiet Street in the heart of Soho and just a short walk to the many cafes, bars, restaurants and boutique shops that Soho has to offer including the famous Carnaby Street as well as Regent Street and Oxford Street. Piccadilly Circus and Oxford Circus Stations are also a short walk away.

Specifics

ACCOMMODATION & FEATURES	COMMUTE	ON YOUR DOORSTEP
<ul style="list-style-type: none"> • Available 26th September • Modern Apartment • Beautifully Furnished • Private Balcony • Wooden Flooring • Floor to Ceiling Windows • Central Soho • Managed by LDG 	<p>Piccadilly Circus - 320m</p> <p>Oxford Circus - 640m</p>	<p>Nordic Bakery</p> <p>Dishoom Carnaby</p> <p>Bob Bob Ricard</p> <p>Hix Soho</p> <p>Marshall Street Leisure Centre</p>

9 Great Pulteney Street



Ready to talk?



**MAX
CHAUDRY**

DD: 020 7291 0998
M: 0775 687 3938
E: max@ldg.co.uk



**VAS
VASILOKONSTANTAKIS**

DD: 020 7292 0990
M: 07809 410 252
E: vas@ldg.co.uk



**THEMIS
POLLALIS**

DD: 020 4513 6751
M: 07809 410 182
E: themis@ldg.co.uk



**EMLYN
YOUNG**

DD: 020 7290 0593
M: 07881 971 315
E: emlyn@ldg.co.uk



**MINETTE
RIBEIRO SA**

DD: 0207291 0997
M: 07342 679 424
E: minette@ldg.co.uk



**GEORGIE
MACKAY-STEWART**

DD: 020 4542 4873
M: 07551 780 308
E: georgie@ldg.co.uk



**MEGAN
BATTLE**

DD: 020 7290 0598
M: 07391 852 165
E: megan@ldg.co.uk



**SHANNON
TUPPER**

DD: 020 4513 6750
M: 07920 015 392
E: shannon@ldg.co.uk

LDG | www.ldg.co.uk
53 Great Titchfield Street
London, W1W 7PJ

9 Great Pulteney Street

