

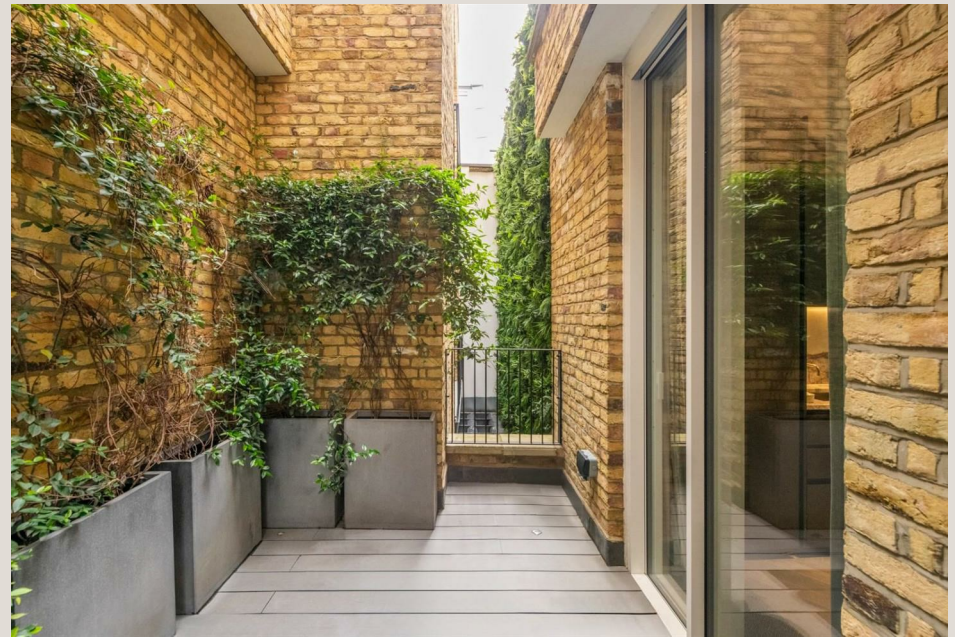


LDG

LANGHAM STREET
Fitzrovia



Langham Street







ADDRESS	POSTCODE	LOCAL AUTHORITY	RENT
Langham Street, Fitzrovia	W1W 7AR	Westminster	£1,295 Per Week

THE SPACE

Beautifully interior designed spacious one bedroom split level apartment on the ground and lower ground floor of this prestigious mansion block with concierge, located on a prime address in Fitzrovia. Property comprises of an open plan kitchen and living room, double bedroom with built storage, modern bathroom with walk in shower and two private patios.

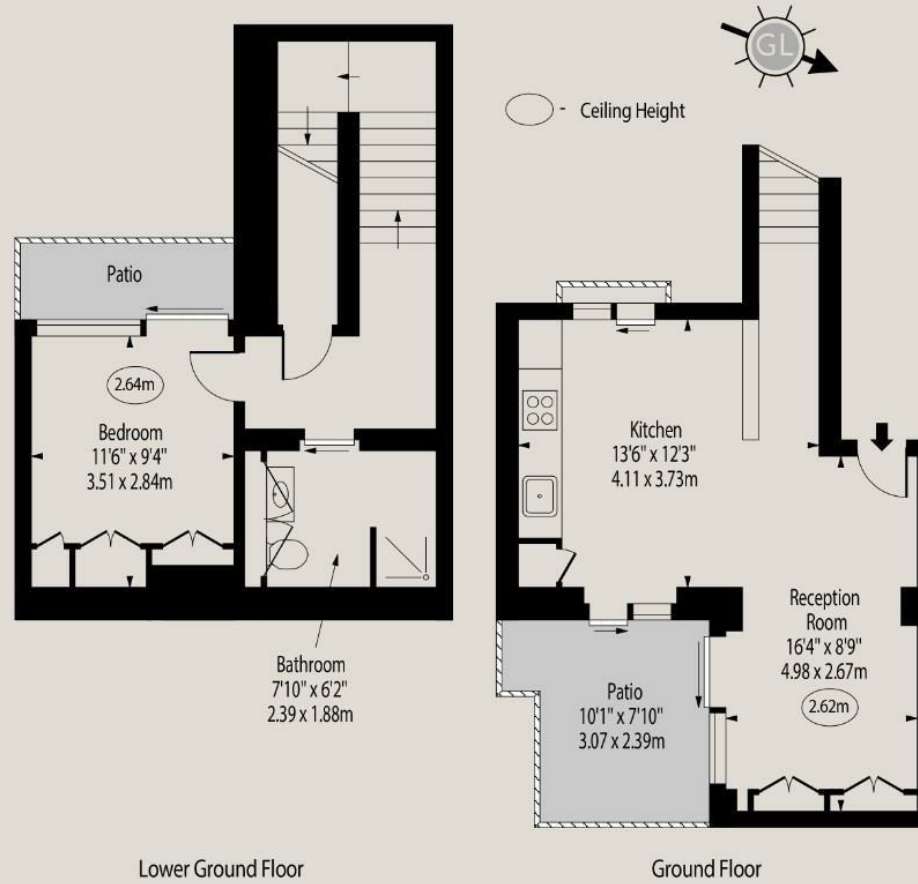
Specifics

ACCOMMODATION & FEATURES	COMMUTE	ON YOUR DOORSTEP
<ul style="list-style-type: none">• Available 2nd of September• Prestigious Development• One Bedroom Apartment• Open Plan Kitchen & Reception Room• Private Patio• Concierge• Furnished• Managed by LDG	<p>Oxford Circus - 488m</p> <p>Goodge Street - 644m</p> <p>Great Portland Street - 644m</p>	<p>Riding House Café</p> <p>Alex Coffee</p> <p>Crown and Sceptre</p> <p>Pure Gym</p> <p>The Regent's Park</p>

Langham Street

Langham Street,
Fitzrovia, W1W 7AR
Gross Internal Area 614 sq. feet (57.04 sq. metres)

Floor Plan



For Illustration Purposes Only - Not To Scale
www.goldlens.co.uk
Ref. No. 024511E

Ready to talk?



**MAX
CHAUDRY**

DD: 020 7291 0998
M: 0775 687 3938
E: max@ldg.co.uk



**VAS
VASILOKONSTANTAKIS**

DD: 020 7292 0990
M: 07809 410 252
E: vas@ldg.co.uk



**THEMIS
POLLALIS**

DD: 020 4513 6751
M: 07809 410 182
E: themis@ldg.co.uk



**EMLYN
YOUNG**

DD: 020 7290 0593
M: 07881 971 315
E: emlyn@ldg.co.uk



**MINETTE
RIBEIRO SA**

DD: 0207291 0997
M: 07342 679 424
E: minette@ldg.co.uk



**GEORGIE
MACKAY-STEWART**

DD: 020 4542 4873
M: 07551 780 308
E: georgie@ldg.co.uk



**MEGAN
BATTLE**

DD: 020 7290 0598
M: 07391 852 165
E: megan@ldg.co.uk



**SHANNON
TUPPER**

DD: 020 4513 6750
M: 07920 015 392
E: shannon@ldg.co.uk

LDG | www.ldg.co.uk
53 Great Titchfield Street
London, W1W 7PJ

Langham Street

