



LDG

CLIPSTONE STREET
Fitzrovia



Clipstone Street







ADDRESS	POSTCODE	LOCAL AUTHORITY	RENT
Clipstone Street, Fitzrovia	W1W 5DH	Westminster City Council	£475 Per Week

THE SPACE

A large studio apartment situated in a popular purpose-built block just off of Great Titchfield Street. The apartment has a modern open-plan kitchen reception room with large windows, a separate sleeping area and a modern bathroom with a bath and overhead shower. The apartment is furnished and has wooden flooring throughout.

Packed full of cafes and eateries, the cafe society of Great Titchfield Street is within a short stroll as are both Oxford Circus and the greenery of The Regents Park.

Specifics

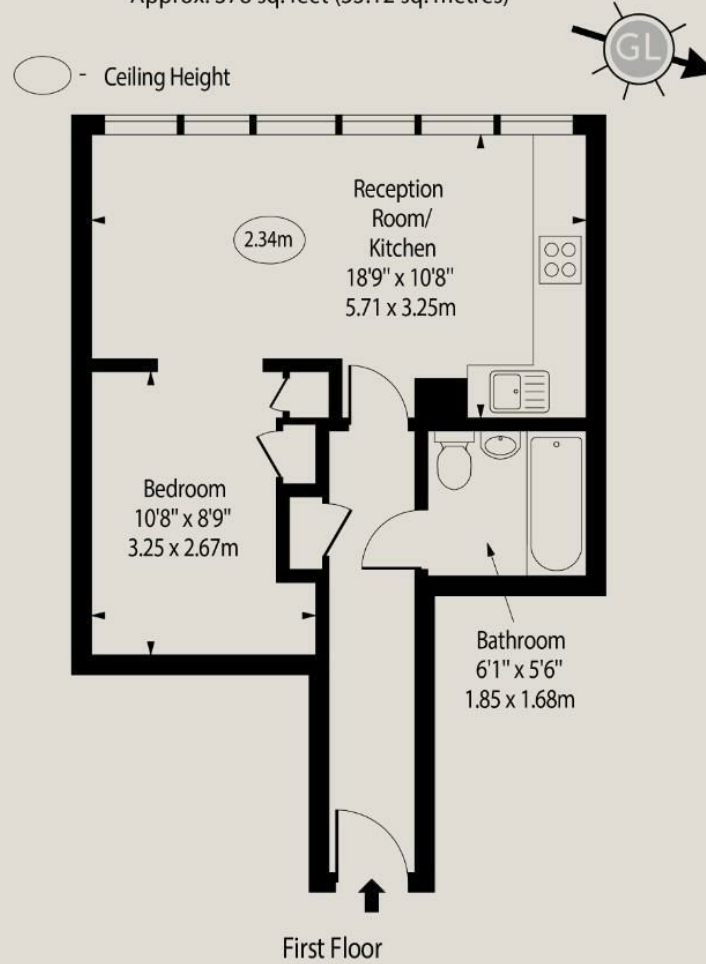
ACCOMMODATION & FEATURES	COMMUTE	ON YOUR DOORSTEP
<ul style="list-style-type: none"> • Available 24th of September • Large Studio Apartment • Separate Sleeping Area • Modern Kitchen • Bath and Shower • Furnished • Wooden Flooring • Managed by LDG 	<p>Great Portland Street - 420m</p> <p>Warren Street - 640m</p> <p>Oxford Circus - 800m</p>	<p>Riding House Café</p> <p>Caravan</p> <p>Alex Coffee</p> <p>Pure Gym</p> <p>The Regents Park</p>

Clipstone Street

Holcroft Court,
Clipstone Street, W1W 5DH

Approx. 378 sq. feet (35.12 sq. metres)

Floor Plan



For Illustration Purposes Only - Not To Scale
www.goldlens.co.uk
Ref. No. 018238E

Ready to talk?



**MAX
CHAUDRY**

DD: 020 7291 0998
M: 0775 687 3938
E: max@ldg.co.uk



**VAS
VASILOKONSTANTAKIS**

DD: 020 7292 0990
M: 07809 410 252
E: vas@ldg.co.uk



**THEMIS
POLLALIS**

DD: 020 4513 6751
M: 07809 410 182
E: themis@ldg.co.uk



**EMLYN
YOUNG**

DD: 020 7290 0593
M: 07881 971 315
E: emlyn@ldg.co.uk



**MINETTE
RIBEIRO SA**

DD: 0207291 0997
M: 07342 679 424
E: minette@ldg.co.uk



**GEORGIE
MACKAY-STEWART**

DD: 020 4542 4873
M: 07551 780 308
E: georgie@ldg.co.uk



**MEGAN
BATTLE**

DD: 020 7290 0598
M: 07391 852 165
E: megan@ldg.co.uk



**SHANNON
TUPPER**

DD: 020 4513 6750
M: 07920 015 392
E: shannon@ldg.co.uk

LDG | www.ldg.co.uk
53 Great Titchfield Street
London, W1W 7PJ

Clipstone Street

