



LDG

36-40 MAPLE STREET
Fitzrovia



36-40 Maple Street







ADDRESS	POSTCODE	LOCAL AUTHORITY	RENT
36-40 Maple Street, London	W1T 6HE	Camden Council	£495 Per Week

THE SPACE

A large studio apartment set on the 3rd floor of this modern building in Fitzrovia, W1. Offering wooden flooring and large windows throughout which allow in plenty of natural light as well as a modern kitchen and bathroom. The cost of the heating and hot water is included.

Maple Street is close to a range of local shops, bars and restaurants as well as the open green spaces of Regent's Park. Great Portland Street, Warren and Goodge street Underground Stations are moments away for links throughout the City so are the famous bars and restaurants of Charlotte Street.

Specifics

ACCOMMODATION

& FEATURES

- Available 5th of September '24
- Large Studio Flat
- Wooden Flooring
- Un/furnished
- Modern Kitchen & Bathroom
- Heating & Water Inclusive
- Third Floor with Lift
- Managed by LDG

COMMUTE

Goodge Street (Northern Line)
483m

Warren Street (Victoria and
Northern line) 483m

Great Portland Street
(Hammersmith & City, Circle,
Metropolitan Lines) 483m

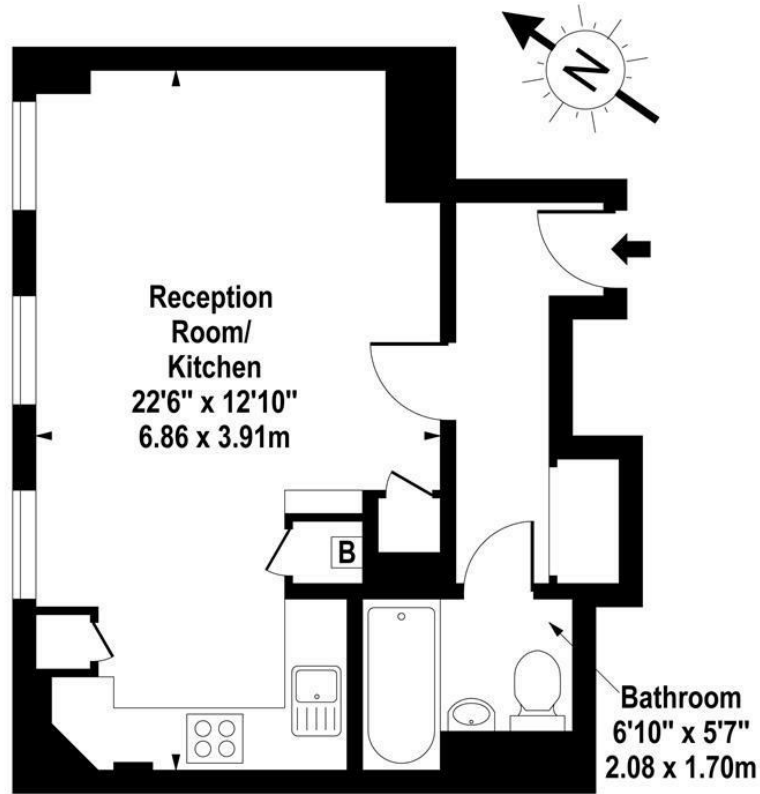
ON YOUR DOORSTEP

Fish Bone Fish and Chips
 Thai Metro
 Kaffeine
 Alex Coffee
 Pure Gym
 Regents Park

36-40 Maple Street

Maple Street, W1T 6HE

Approx. 360 sq. feet (33.44 sq. metres)



Third Floor

For Illustration Purposes Only - Not To Scale
www.goldlens.co.uk
Ref. No. 001975

ldg.co.uk

Ready to talk?



**MAX
CHAUDRY**

DD: 020 7291 0998
M: 07756 873938
E: max@ldg.co.uk



**VAS
VASILOKONSTANTAKIS**

DD: 020 7292 0990
M: 07809 410 252
E: vas@ldg.co.uk



**THEMIS
POLLALIS**

DD: 020 4513 6751
M: 07809 410 182
E: themis@ldg.co.uk



**EMLYN
YOUNG**

DD: 020 7290 0593
M: 07881 971 315
E: emlyn@ldg.co.uk