



LDG

CLIPSTONE STREET  
Fitzrovia











ADDRESS	POSTCODE	LOCAL AUTHORITY	RENT
Clipstone Street, London	W1W 5DJ	Westminster City Council	£692 Per Week

### THE SPACE

Located in the popular Holcroft Court in the heart of Fitzrovia the apartment comprises two double bedrooms, a good size reception room, a separate kitchen and a bathroom with bath and shower. Holcroft Court is a secure development with communal garden.

Clipstone Street is a popular residential area in pleasant Fitzrovia close to a wide range of excellent amenities including Oxford Street and Tottenham Court Road. Great Portland Street Underground Station (Circle, Metropolitan and Hammersmith and City lines) is close by for links into the City and the West End. Goodge Street Station and Warren Street are also within few minutes walk.

Specifics

### ACCOMMODATION

#### & FEATURES

- Available 9th of August
- Two Double Bedrooms
- Modern Furniture
- Separate Kitchen
- Furnished
- Large Reception Room
- Balcony
- Managed by LDG

### COMMUTE

Great Portland Street - 420m

Warren Street - 640m

Oxford Circus - 800m

### ON YOUR DOORSTEP

Riding House Café

Caravan

Santa Maria

Alex Coffee

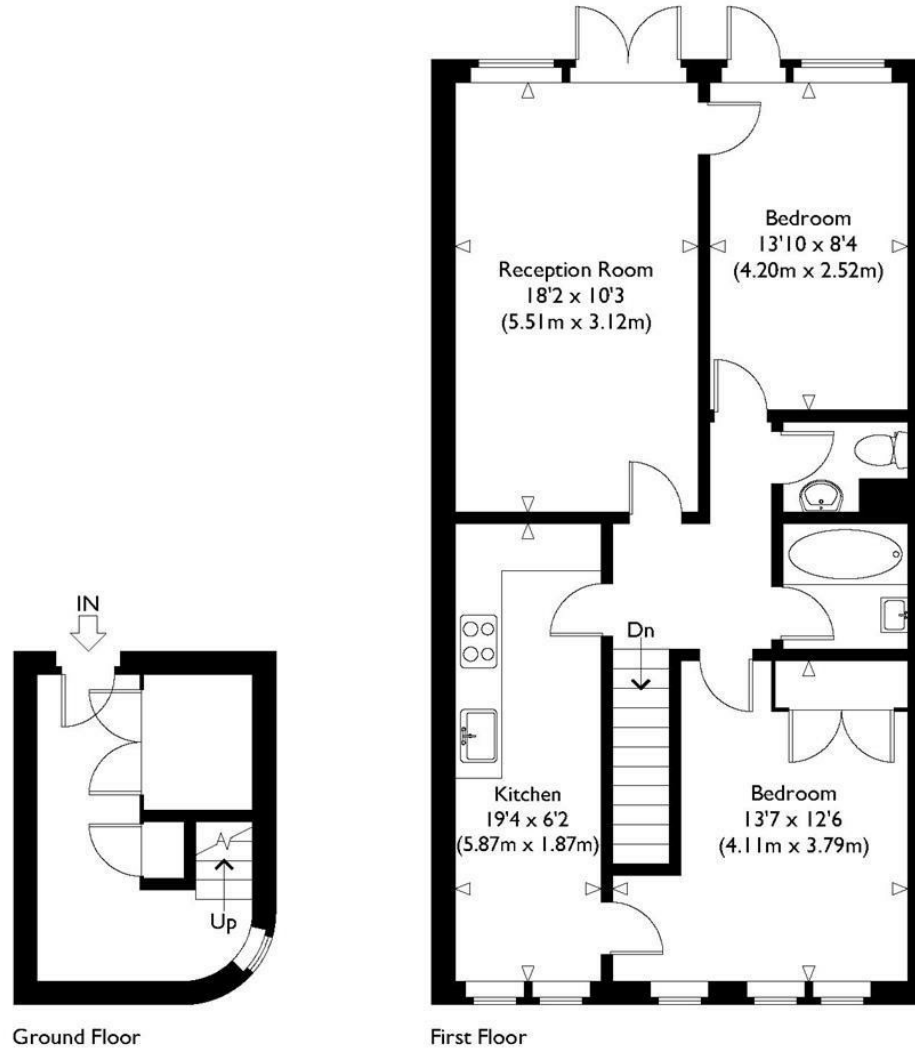
Pure Gym

The Regents Park

Clipstone Street



# Holcroft Court



Approximate Gross Internal Floor Area : 836 sq ft / 77.7 sq m

Illustration for identification purposes only, measurements are approximate, not to scale.

Ready to talk?



**MAX  
CHAUDRY**

DD: 020 7291 0998  
M: 07756 873938  
E: max@ldg.co.uk



**VAS  
VASILOKONSTANTAKIS**

DD: 020 7292 0990  
M: 07809 410 252  
E: vas@ldg.co.uk



**THEMIS  
POLLALIS**

DD: 020 4513 6751  
M: 07809 410 182  
E: themis@ldg.co.uk



**EMLYN  
YOUNG**

DD: 020 7290 0593  
M: 07881 971 315  
E: emlyn@ldg.co.uk