

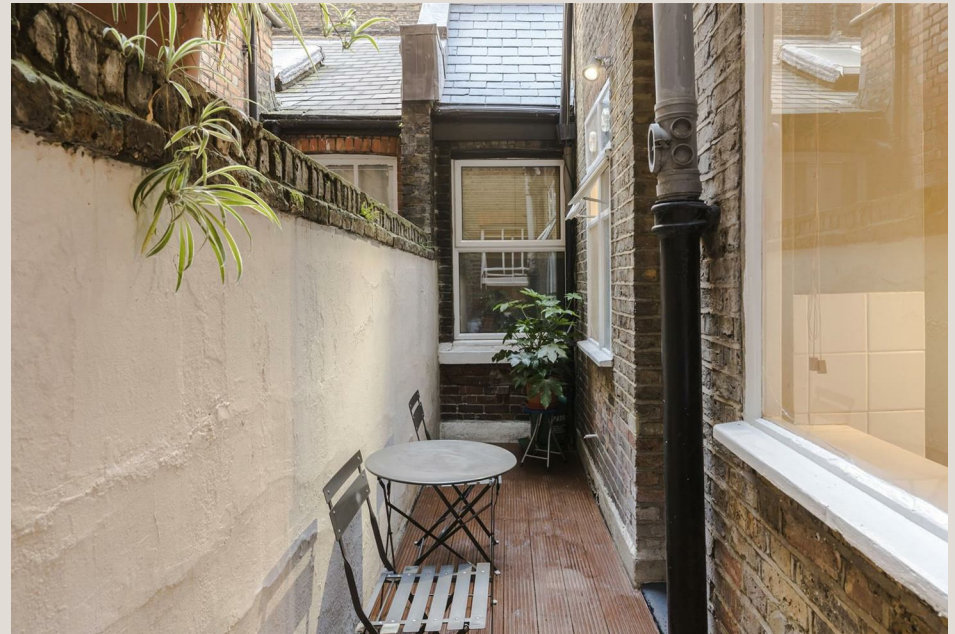


LDG

HANSON STREET
Fitzrovia



Hanson Street







ADDRESS	POSTCODE	LOCAL AUTHORITY	RENT
Hanson Street, Fitzrovia	W1W 6TW	Westminster City Council	£519 Per Week

THE SPACE

A lovely apartment features a reception room with wooden flooring and a large window overlooking the private patio, a modern separate kitchen, and a bathroom with a walk-in shower.

Located on Hanson Street in the heart of Fitzrovia, this charming apartment enjoys quiet surroundings and is a short walk from Regents Park. Goodge Street and Oxford Circus underground station.

Specifics

ACCOMMODATION & FEATURES

- Available on 6th August 2024
- Private Patio
- Period Features
- Separate Kitchen
- Walk-in Shower
- Central Fitzrovia
- Close to Oxford Circus
- Close to Regents Park

COMMUTE

- Oxford Circus (800m)
- Great Portland Street (640m)
- Goodge Street (640m)

ON YOUR DOORSTEP

- Riding House Café
- Foleys
- Kaffeine
- Kings Arms
- PureGym
- The Regents Park

Hanson Street

Hanson Street

Approximate Gross Internal Area
39.7 sq m / 427 sq ft



Lower Ground Floor

Illustration for identification purposes only,
measurements are approximate, not to scale.
FloorplansUsketch.com © 2021 (ID 799890)

Ready to talk?



**MAX
CHAUDRY**

DD: 020 7291 0998
M: 0775 687 3938
E: max@ldg.co.uk



**VAS
VASILOKONSTANTAKIS**

DD: 020 7292 0990
M: 07809 410 252
E: vas@ldg.co.uk



**THEMIS
POLLALIS**

DD: 020 4513 6751
M: 07809 410 182
E: themis@ldg.co.uk



**EMLYN
YOUNG**

DD: 020 7290 0593
M: 07881 971 315
E: emlyn@ldg.co.uk



**MINETTE
RIBEIRO SA**

DD: 0207291 0997
M: 07342 679 424
E: minette@ldg.co.uk



**GEORGIE
MACKAY-STEWART**

DD: 020 4542 4873
M: 07551 780 308
E: georgie@ldg.co.uk



**MEGAN
BATTLE**

DD: 020 7290 0598
M: 07391 852 165
E: megan@ldg.co.uk



**SHANNON
TUPPER**

DD: 020 4513 6750
M: 07920 015 392
E: shannon@ldg.co.uk

LDG | www.ldg.co.uk
53 Great Titchfield Street
London, W1W 7PJ

Hanson Street

