



LDG

CLEVELAND STREET
Fitzrovia



Cleveland Street







ADDRESS	POSTCODE	LOCAL AUTHORITY	RENT
Cleveland Street, Fitzrovia	W1T 6NT	Camden	£775 Per Week

THE SPACE

A recently redecorated apartment located on the second floor of a charming period conversion in the heart of Fitzrovia, W1. The apartment is finished to a high standard and offers period features as well as wooden flooring throughout, a separate fully fitted kitchen and contemporary furniture.

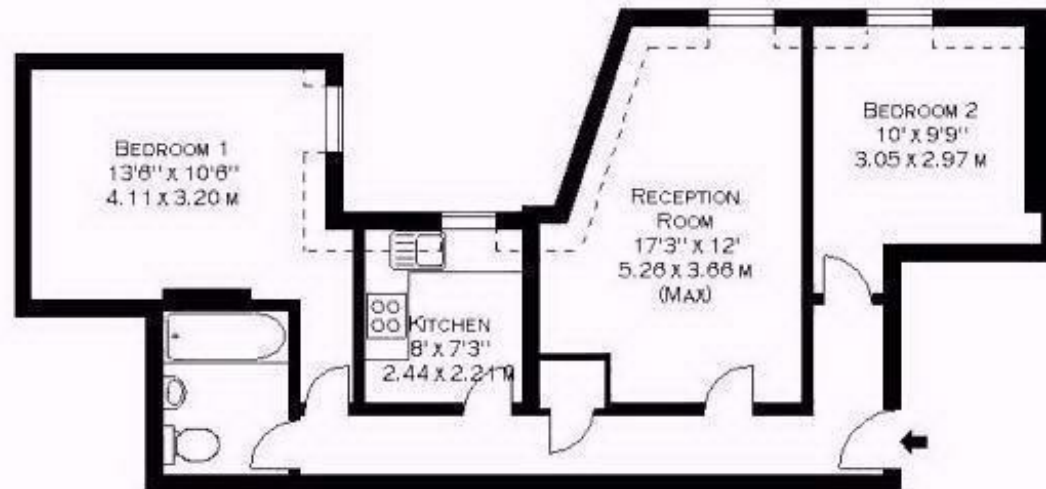
Situated only within a few minute walk from the historic Fitzroy Square, this property is positioned ideally for Great Portland Street and Warren Street underground stations with excellent transport links to the City and West End. Local shops, bars and restaurants of Fitzrovia are within a few minutes' walk, so is the green open spaces of Regent's Park.

Specifics

ACCOMMODATION & FEATURES	COMMUTE	ON YOUR DOORSTEP
<ul style="list-style-type: none"> • Available 27 August • Two Double Bedrooms • Spacious Living Room • Separate Kitchen • Modern Bathroom • Period Conversion • Wooden Flooring • Managed by LDG 	<p>Regents Park (Central, Piccadilly and Bakerloo lines) 643m</p> <p>Great Portland Street (Circle, Metropolitan line and Hammersmith & City lines) 482m</p> <p>Goodge Street (Northern line) - 804m</p>	<p>Mac and Wild</p> <p>Riding House Café</p> <p>Alex Coffee</p> <p>Crown and Scepter</p> <p>PureGym</p> <p>Regents Park</p>

Cleveland Street

**FLAT 2A,
102 CLEVELAND STREET, W1.
APPROX. GROSS INTERNAL AREA *
639 FT² - 59.36 M²**



SECOND FLOOR

Cleveland Street

Ready to talk?



**MAX
CHAUDRY**

DD: 020 7291 0998
M: 0775 687 3938
E: max@ldg.co.uk



**VAS
VASILOKONSTANTAKIS**

DD: 020 7292 0990
M: 07809 410 252
E: vas@ldg.co.uk



**THEMIS
POLLALIS**

DD: 020 4513 6751
M: 07809 410 182
E: themis@ldg.co.uk



**EMLYN
YOUNG**

DD: 020 7290 0593
M: 07881 971 315
E: emlyn@ldg.co.uk



**MINETTE
RIBEIRO SA**

DD: 0207291 0997
M: 07796 427 363
E: minette@ldg.co.uk



**GEORGIE
MACKAY-STEWART**

DD: 020 4542 4873
M: 07551 780 308
E: georgie@ldg.co.uk



**MEGAN
BATTLE**

DD: 020 7290 0598
M: 07391 852 165
E: megan@ldg.co.uk



**SHANNON
TUPPER**

DD: 020 4513 6750
M: 07920 015 392
E: shannon@ldg.co.uk

LDG | www.ldg.co.uk
53 Great Titchfield Street
London, W1W 7PJ

Cleveland Street

