



LDG

HANSON STREET  
Fitzrovia











ADDRESS	POSTCODE	LOCAL AUTHORITY	RENT
Hanson Street, Fitzrovia	W1W 6TG	Westminster City Council	£519 Per Week

### THE SPACE

A lovely furnished apartment with a bright reception room with a feature fireplace, a good size double bedroom, a separate modern eat-in kitchen with exposed brickwork and a modern bathroom.

Located on the Hanson Street which is a quiet street in the heart of Fitzrovia, this lovely apartment also benefits from quiet surroundings and is strolling distance from Regents Park. Goodge Street and Oxford Circus underground stations are also close by. Also within a walking distance to Marylebone, Soho, Covent Garden, Bloomsbury and Mayfair areas.

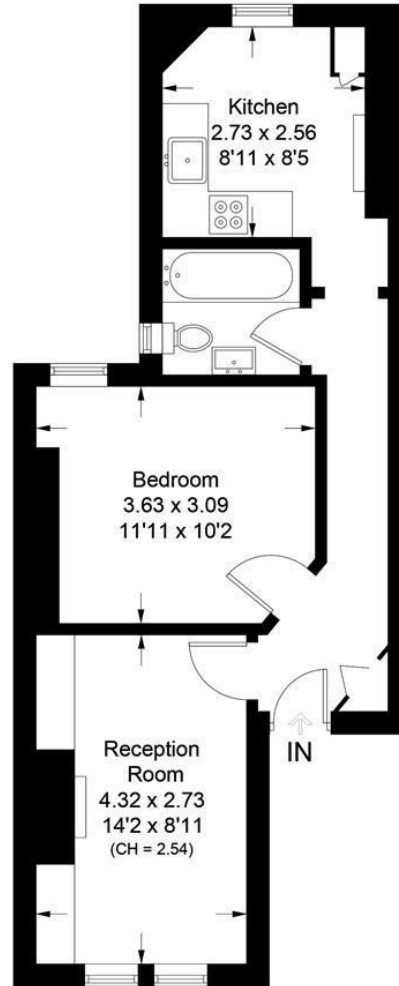
Specifics

ACCOMMODATION & FEATURES	COMMUTE	ON YOUR DOORSTEP
<ul style="list-style-type: none"><li>• Available 28th August</li><li>• Period Features</li><li>• Bright Reception Room</li><li>• Feature Fireplace</li><li>• Separate Kitchen</li><li>• Furnished</li><li>• Quiet Street</li><li>• Managed by LDG</li></ul>	<p>Goodge Street - 550m</p> <p>Oxford Circus - 700m</p> <p>Great Portland Street - 750m</p>	<p>Riding House Café</p> <p>Foleys</p> <p>Alex Coffee</p> <p>Kings Arms</p> <p>Pure Gym</p> <p>The Regents Park</p>

Hanson Street

### Alcombe House

Approximate Gross Internal Area = 42.6 sq m / 458 sq ft



### Third Floor

Illustration for identification purposes only, measurements are approximate, not to scale. floorplansUsketch.com © (ID702710)

LDG.CO.UK

Ready to talk?



**MAX  
CHAUDRY**

DD: 020 7291 0998  
M: 07756 873938  
E: max@ldg.co.uk



**VAS  
VASILOKONSTANTAKIS**

DD: 020 7292 0990  
M: 07809 410 252  
E: vas@ldg.co.uk



**THEMIS  
POLLALIS**

DD: 020 4513 6751  
M: 07809 410 182  
E: themis@ldg.co.uk



**EMLYN  
YOUNG**

DD: 020 7290 0593  
M: 07881 971 315  
E: emlyn@ldg.co.uk