



LDG

10-16 RATHBONE STREET
Fitzrovia









ADDRESS	POSTCODE	LOCAL AUTHORITY	RENT
Rathbone Street, Fitzrovia	W1T 1NT	Westminster	£923 Per Week

THE SPACE

A large duplex apartment located on the ground and lower ground levels on a quiet street just a short walk to Goodge Street and Oxford Circus.

On the ground floor, there is a large reception room with a modern open-plan kitchen and dining area. On the lower ground level, there are two large double bedrooms with skylights, both with en-suite bathrooms, a guest WC and large storage.

Rathbone Street is located in the heart of cultural Fitzrovia offering the ideal West End lifestyle. You can take advantage of the shops, galleries, museums or clubs and enjoy the fine cafés or restaurants as they are all virtually on your doorstep.

Tottenham Court Road underground station, Oxford Street and Charlotte Street are literally minutes walking distance completing the travelling or local needs for your complete London home.

Specifics

ACCOMMODATION & FEATURES	COMMUTE	ON YOUR DOORSTEP
<ul style="list-style-type: none"> • Available 9th August 2024 • Large Duplex Apartment • Two Double Bedrooms • Two En-Suite Bathrooms • Open-Plan Kitchen • Wooden Flooring • Furnished • Managed by LDG 	<p>Goodge Street - 480m</p> <p>Tottenham Court Road - 480m</p> <p>Oxford Circus - 800m</p>	<p>Lantana</p> <p>Thai Metro</p> <p>Berners Tavern</p> <p>Charlotte Street Hotel</p> <p>The Regents Park</p>

10-16 Rathbone Street

Rathbone Street

Approximate Gross Internal Area = 104.3 sq m / 1123 sq ft



Floor Plan

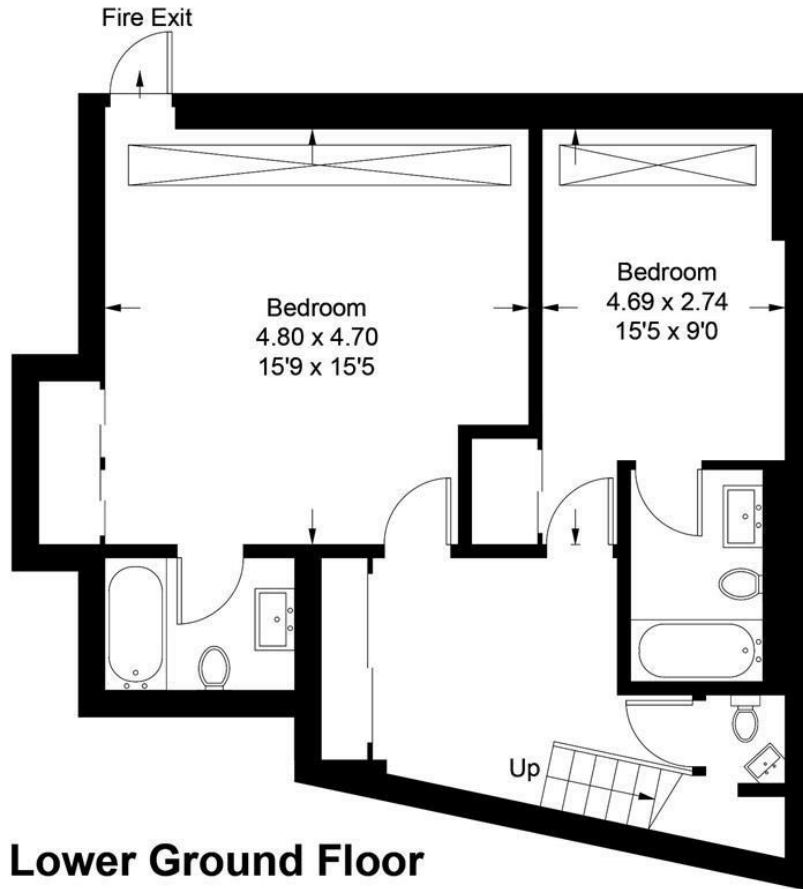


Illustration for identification purposes only, measurements are approximate, not to scale. floorplansUsketch.com © (ID666910)

LDG.CO.UK

10-16 Rathbone Street

Ready to talk?



**MAX
CHAUDRY**

DD: 020 7291 0998
M: 07756 873938
E: max@ldg.co.uk



**VAS
VASILOKONSTANTAKIS**

DD: 020 7292 0990
M: 07809 410 252
E: vas@ldg.co.uk



**THEMIS
POLLALIS**

DD: 020 4513 6751
M: 07809 410 182
E: themis@ldg.co.uk



**EMLYN
YOUNG**

DD: 020 7290 0593
M: 07881 971 315
E: emlyn@ldg.co.uk