



LDG

6 COSWAY STREET  
Marylebone



6 Cosway Street







| ADDRESS                 | POSTCODE | LOCAL AUTHORITY          | RENT          |
|-------------------------|----------|--------------------------|---------------|
| 6 Cosway Street, London | NW1 5NR  | Westminster City Council | £650 Per Week |

### THE SPACE

Located just a short walk from Marylebone station this ground floor flat has wood laminate flooring throughout and plenty of storage. Comprising a reception room with large windows, a separate modern kitchen, two double bedrooms and a shower room.

Cosway Street is located just a few minutes' walk away from Marylebone Station and also close to Baker Street and Edgware Road stations. All shops and bars of Marylebone is within a short walk, so is the beautiful Regents Park.

Specifics

### ACCOMMODATION

#### & FEATURES

- Available 12th of August
- Recently Decorated
- Two Double Bedrooms
- Furnished
- Wooden Flooring
- Walk-in Shower
- Open-Plan Kitchen
- Managed by LDG

### COMMUTE

Edgware Road - 480m

Marylebone Station - 320m

### ON YOUR DOORSTEP

Firebrand Pizza

Briciole

Gino's Coffee Bar

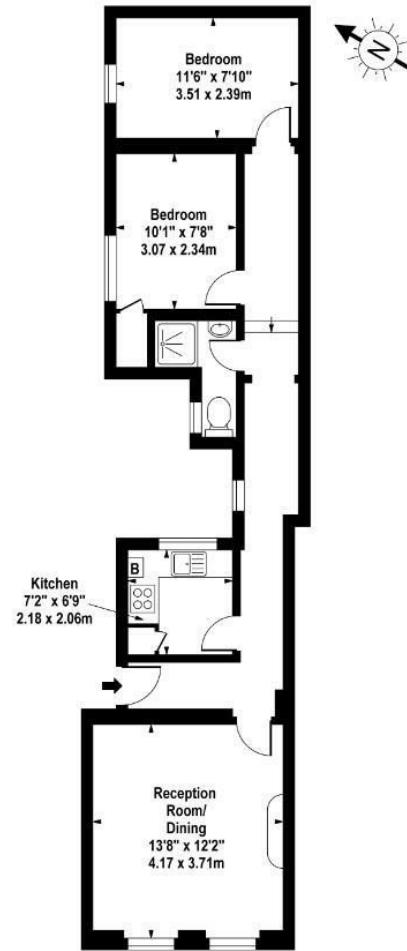
Regents Bar and Kitchen

PureGym

6 Cosway Street

### Cosway Street, NW1 5NR

Approx. 595 sq. feet (55.28 sq. metres)



Ground Floor

For Illustration Purposes Only - Not To Scale  
www.goldlens.co.uk  
Ref. No. 003796M

ldg.co.uk

Ready to talk?



**MAX  
CHAUDRY**

DD: 020 7291 0998  
M: 07756 873938  
E: max@ldg.co.uk



**VAS  
VASILOKONSTANTAKIS**

DD: 020 7292 0990  
M: 07809 410 252  
E: vas@ldg.co.uk



**THEMIS  
POLLALIS**

DD: 020 4513 6751  
M: 07809 410 182  
E: themis@ldg.co.uk



**EMLYN  
YOUNG**

DD: 020 7290 0593  
M: 07881 971 315  
E: emlyn@ldg.co.uk