



LDG

7-8 RATHBONE PLACE  
Fitzrovia



7-8 Rathbone Place







ADDRESS	POSTCODE	LOCAL AUTHORITY	RENT
7-8 Rathbone Place, London	W1T 1HN	Westminster City Council	£600 Per Week

## THE SPACE

Situated in a modern development located in the heart of Fitzrovia and only a stone's throw from the high street shops of Oxford Street and the restaurants of Charlotte Street. Offering wooden flooring throughout and air-conditioning as well as an open-plan modern kitchen and a separate study area.

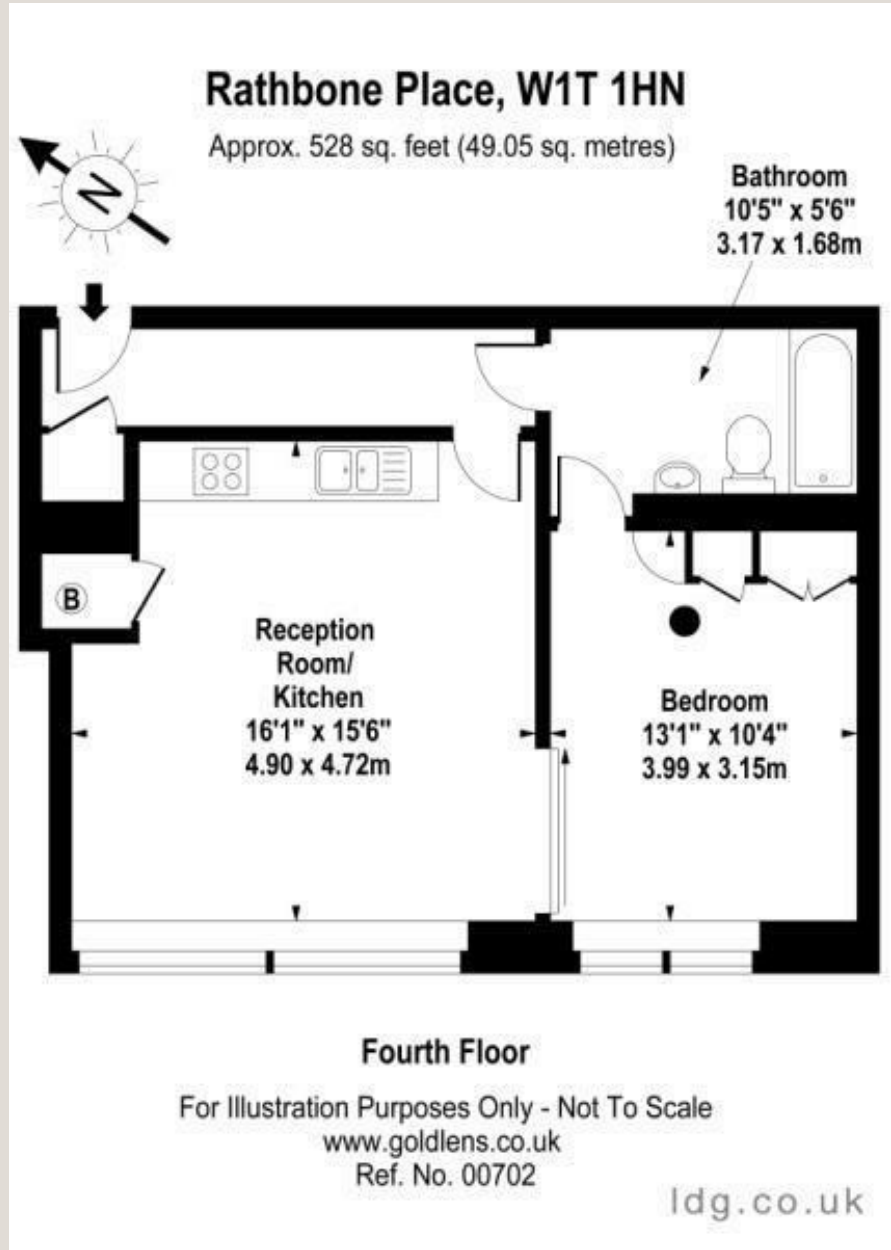
Situated on the 4th floor (with lift) the apartment benefits from a spacious double bedroom, a modern bathroom and a modern reception room.

You can take advantage of the shops, galleries, museums or clubs and enjoy the fine cafés or restaurants as they are all virtually on your doorstep as well as Tottenham Court Road underground station, Oxford Street and Charlotte Street are within short walking distance.

Specifics

ACCOMMODATION & FEATURES	COMMUTE	ON YOUR DOORSTEP
<ul style="list-style-type: none"> <li>• Available 14th August '24</li> <li>• Fully Air Conditioned</li> <li>• Wooden Floor</li> <li>• Lift Access</li> <li>• Large Windows</li> <li>• Modern Kitchen</li> <li>• Beautiful Development</li> <li>• Close to Oxford Street</li> </ul>	<p>Tottenham Court Road - 180m</p> <p>Oxford Circus - 650m</p>	<p>Thai Metro</p> <p>Circolo Popolare</p> <p>Berners Tavern</p> <p>Lavelle coffee</p> <p>Charlotte Street Hotel</p> <p>Regents Park</p>

**7-8 Rathbone Place**



Ready to talk?



**MAX  
CHAUDRY**

DD: 020 7291 0998  
M: 07756 873938  
E: max@ldg.co.uk



**VAS  
VASILOKONSTANTAKIS**

DD: 020 7292 0990  
M: 07809 410 252  
E: vas@ldg.co.uk



**THEMIS  
POLLALIS**

DD: 020 4513 6751  
M: 07809 410 182  
E: themis@ldg.co.uk

LDG | [www.ldg.co.uk](http://www.ldg.co.uk)  
53 Great Titchfield Street  
London, W1W 7JP

7-8 Rathbone Place

