



LDG

20 NASSAU STREET  
Fitzrovia











ADDRESS	POSTCODE	LOCAL AUTHORITY	RENT
20 Nassau Street, London	W1W 7AG	Westminster City Council	£807 Per Week

### THE SPACE

This charming apartment features wooden flooring, a bright reception room with a modern open-plan kitchen, master bedroom with en-suite, a further double bedroom, a family bathroom and a storage room.

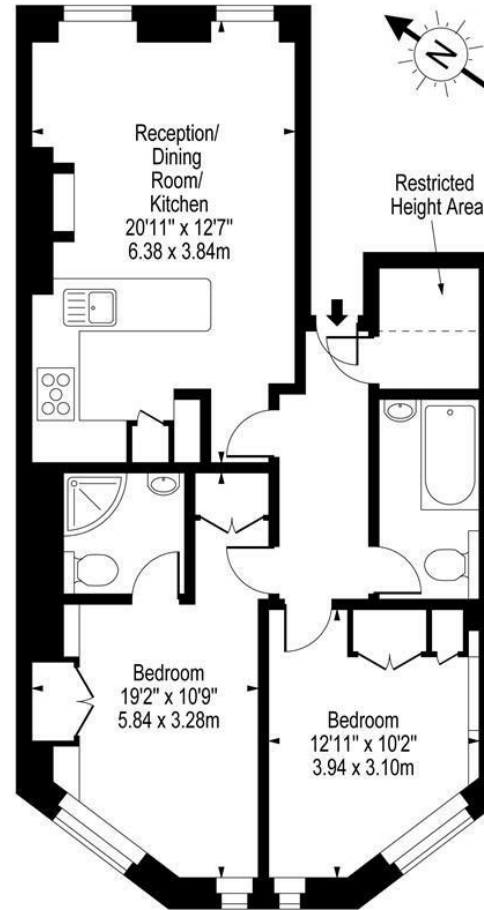
Suitably located close to all the delights of Fitzrovia, you are on the cusp of the renowned 'Coffee Quarter' of Great Titchfield Street and moments from the restaurants of Charlotte Street. To the north is the lush greenery of The Regents Park and just a short stroll south are Oxford Circus, Tottenham Court Road (Cross Rail) and the rest of the West End.

Specifics

ACCOMMODATION & FEATURES	COMMUTE	ON YOUR DOORSTEP
<ul style="list-style-type: none"><li>• Available 2nd August '24</li><li>• Modern Apartment</li><li>• Open-Plan Kitchen</li><li>• Furnished</li><li>• Wooden Flooring</li><li>• Large Windows</li><li>• En-Suite Bathroom</li><li>• Managed by LDG</li></ul>	<p>Goodge Street (320m)</p> <p>Oxford Circus (800m)</p>	<p>Riding House Café</p> <p>Rovi</p> <p>Kaffeine</p> <p>Alex Coffee</p> <p>Pure Gym</p> <p>The Regents Park</p>

**20 Nassau Street**

### Nassau Street, W1W 7AG



Second Floor

Approx Gross Internal Area **702 Sq Ft - 65.22 Sq M**  
(Including Restricted Height Area)

For Illustration Purposes Only - Not To Scale

[www.goldlens.co.uk](http://www.goldlens.co.uk)

Ref. No. 003001

Ready to talk?



**MAX  
CHAUDRY**

DD: 020 7291 0998  
M: 07756 873938  
E: max@ldg.co.uk



**VAS  
VASILOKONSTANTAKIS**

DD: 020 7292 0990  
M: 07809 410 252  
E: vas@ldg.co.uk



**THEMIS  
POLLALIS**

DD: 020 4513 6751  
M: 07809 410 182  
E: themis@ldg.co.uk