



LDG

GREAT TITCHFIELD
STREET

£795,000 STC



Great Titchfield Street







Energy Efficiency Rating		
	Current	Potential
<i>Very energy efficient - lower running costs</i>		
(92 plus) A		
(81-91) B		
(69-80) C		
(55-68) D	68	72
(39-54) E		
(21-38) F		
(1-20) G		
<i>Not energy efficient - higher running costs</i>		
England & Wales	EU Directive 2002/91/EC	

Great Titchfield Street



ADDRESS

Great Titchfield Street, London

POSTCODE

W1W 6SE

THE SPACE

This stylish apartment is in a handsome red brick block in the heart of Fitzrovia. Having been carefully curated, and cared for, by its current owners it is in true Turn Key condition. Features include a spacious reception room, an eat-in kitchen, a good-sized double bedroom, and a smart bathroom. There is fantastic ceiling height throughout and westerly light. Great Titchfield Street is one of the neighbourhood's most fashionable streets. Sometimes known as "the coffee quarter" it offers a haven of independent eateries and coffee shops, whilst being just a short stroll from Soho, Marylebone, and of course the green lungs of The Regents Park. This is a home that appeals to the many who wish to immerse themselves in all of the joys of central London life.

ACCOMMODATION

& FEATURES

- High Ceilings
- Stylish and in Great Condition
- Westerley Light
- Raised Ground Floor
- Eat-in Kitchen
- Spacious Reception Room
- Heart of Fitzrovia

ON YOUR DOORSTEP

Riding House Café (All Day'er)

Alex Coffee (Wake + Smell)

Mortimer House (Food Meets Friends)

Kaffeine (Hooked)

The Regents Park (And Breathe)

PRICE

£795,000, subject to contract

TENURE

Leasehold - 83 years remaining

SERVICE CHARGE

1,227.00 (£103 for reserve fund)

GROUND RENT

£323.00 per annum - next review is in 2029

COUNCIL TAX

Westminster City Band E

RESIDENTS PARKING

TBC

COMMUTE

Great Portland Street Station 500m

Goodge Street Station 600m

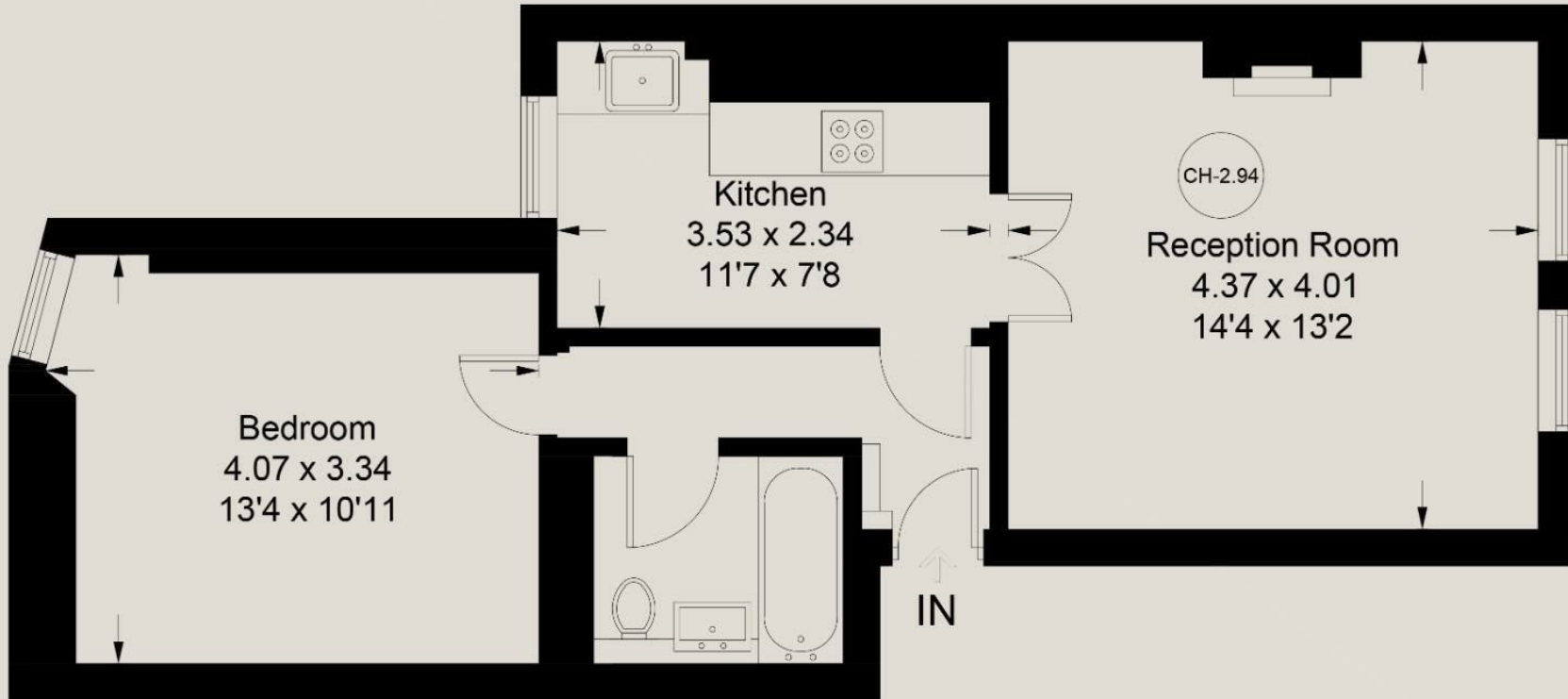
Oxford Circus 800m

Great Titchfield Street

Approximate Gross Internal Area = 47.8 sq m / 514 sq ft



Floor Plan



Raised Ground Floor

Illustration for identification purposes only, measurements are approximate, not to scale. floorplansUsketch.com © (ID1055871)

Ready to talk?



**BEN
EVEREST**

DD: 020 7290 0592
M: 07944 967637
E: ben@ldg.co.uk



**DAVID
CALDEIRA**

DD: 020 4513 6756
M: 07368 333 545
E: david@ldg.co.uk



**EMLYN
YOUNG**

DD: 020 7290 0593
M: 07881 971 315
E: emlyn@ldg.co.uk

LDG | www.ldg.co.uk
53 Great Titchfield Street
London, W1W 7PJ

Great Titchfield Street

