



LDG

48 WELLS STREET  
Fitzrovia



48 Wells Street







ADDRESS	POSTCODE	LOCAL AUTHORITY	RENT
48 Wells Street, London	W1T 3PW	Westminster City Council	£675 Per Week

### THE SPACE

The apartment comprises a spacious reception room leading onto a private balcony, a separate fully fitted kitchen with all modern appliances, a large double bedroom with built-in wardrobes and access to the balcony and a modern bathroom. Further benefits are neutral décor, beautiful wooden floor and loads of natural light throughout.

This apartment is located on one of Fitzrovia's finest blocks, quietly placed off Great Titchfield street. This leads to Oxford Circus in 5 minutes along the road. Easy access to Regent Street, Piccadilly Circus and Oxford Street. If you want a quality flat in one of the most sought after locations you will not be disappointed

### ACCOMMODATION & FEATURES

- Available 19th July '24
- Furnished
- Porter Service
- Private Balcony
- Wooden Flooring
- Separate Kitchen
- Central Fitzrovia
- Managed by LDG

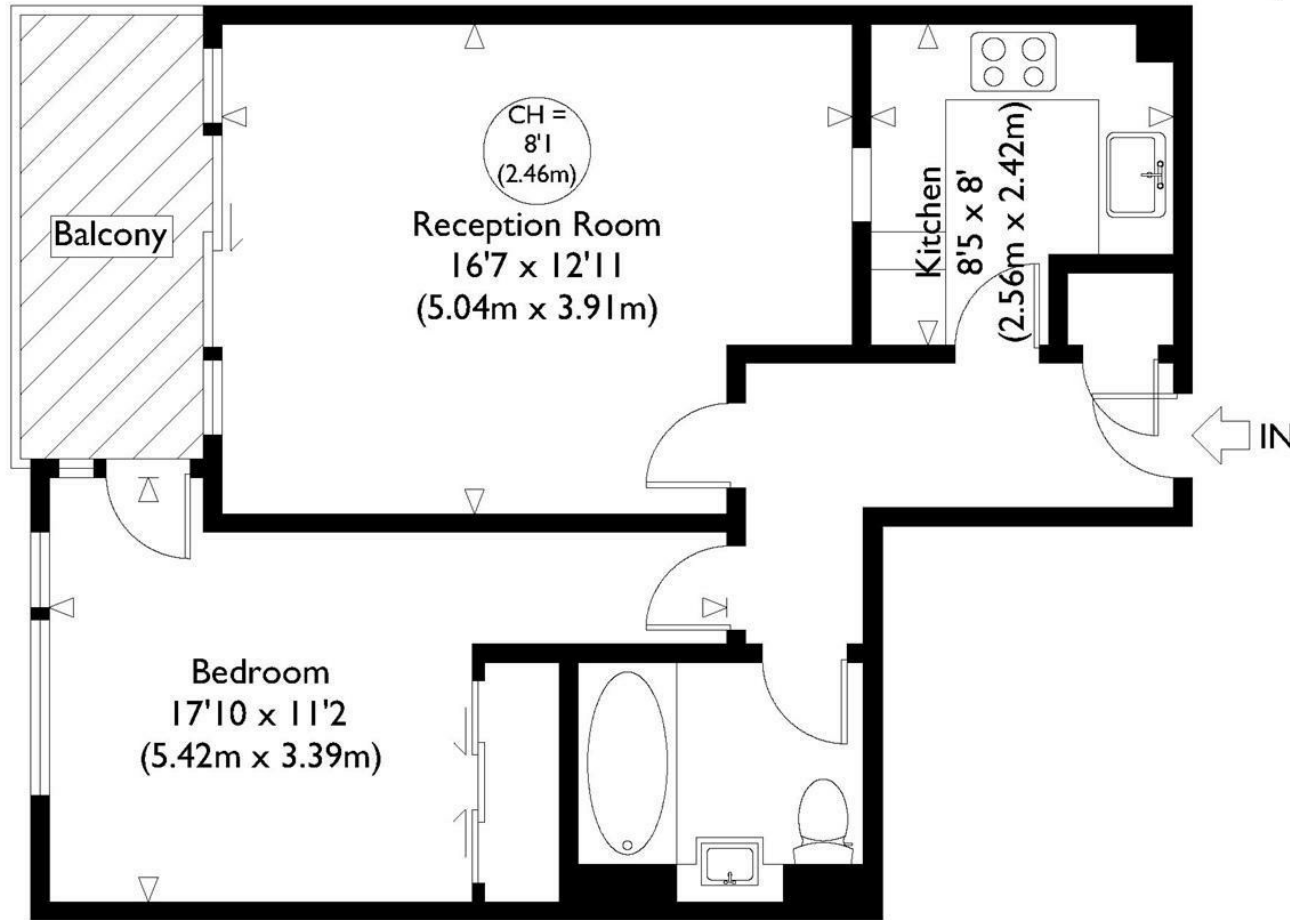
### COMMUTE

Oxford Circus (480m)  
Goodge Street (640m)

### ON YOUR DOORSTEP

Riding House Café  
Kings Arms  
The Arber Garden  
Kaffeine  
Studium Body Works  
The Regents Park

## West One House



Second Floor

Approximate Gross Internal Floor Area : 540 sq ft / 50.2 sq m  
 Illustration for identification purposes only, measurements are approximate, not to scale.

Ready to talk?



**MAX  
CHAUDRY**

DD: 020 7291 0998  
M: 07756 873938  
E: max@ldg.co.uk



**VAS  
VASILOKONSTANTAKIS**

DD: 020 7292 0990  
M: 07809 410 252  
E: vas@ldg.co.uk



**THEMIS  
POLLALIS**

DD: 020 4513 6751  
M: 07809 410 182  
E: themis@ldg.co.uk