



LDG

32 MAPLE STREET
Fitzrovia



32 Maple Street







ADDRESS	POSTCODE	LOCAL AUTHORITY	RENT
32 Maple Street, London	W1T 6HB	Camden	£519 Per Week

THE SPACE

Newly re-decorated throughout, the apartment offers a fantastic living space with a separate modern kitchen which is fully integrated, a double bedroom with built-in wardrobes, a bathroom suite and large windows throughout allowing in plenty of natural light. The apartment is offered furnished.

The property is just a short walk from a great selection of cafes and restaurants on Charlotte Street and Great Titchfield Street. You are also a short stroll from Warren Street, Goodge Street and Great Portland Street underground stations as well as the beautiful Regents Park.

Specifics

ACCOMMODATION

& FEATURES

- Available 11th July '24
- Newly Redecorated
- Separate Modern Kitchen
- Large Windows
- Built-in Wardrobes
- Furnished
- Amazing Location
- Close to The Regents Park

COMMUTE

- Warren Street - 400m
- Goodge Street - 500m
- Great Portland Street - 550m


ON YOUR DOORSTEP

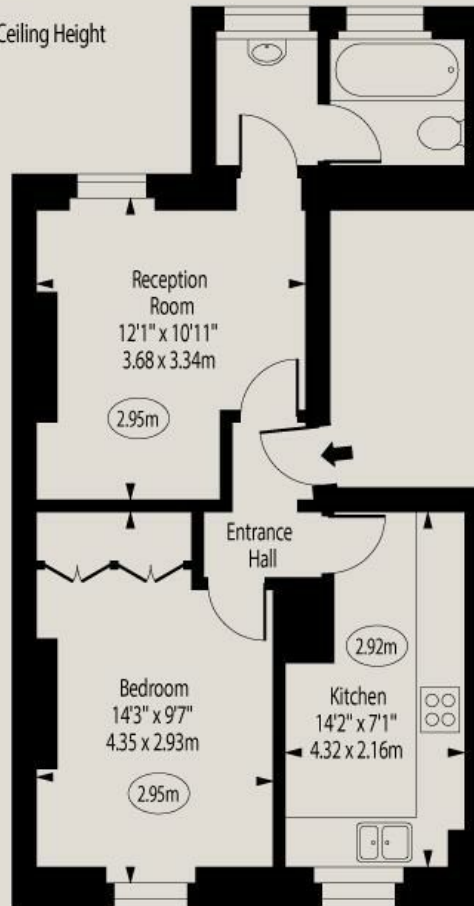
- Thai Metro
- Riding House Cafe
- Grafton Arms
- Planet Organic
- Pure Gym
- The Regents Park

32 Maple Street

Maple Street, W1T 6HB

Approx. 438 sq. feet (40.69 sq. metres)

 - Ceiling Height



First Floor

For Illustration Purposes Only - Not To Scale
www.goldlens.co.uk
Ref. No. 020780R



Ready to talk?



**MAX
CHAUDRY**

DD: 020 7291 0998
M: 07756 873938
E: max@ldg.co.uk



**VAS
VASILOKONSTANTAKIS**

DD: 020 7292 0990
M: 07809 410 252
E: vas@ldg.co.uk



**THEMIS
POLLALIS**

DD: 020 4513 6751
M: 07809 410 182
E: themis@ldg.co.uk

LDG | www.ldg.co.uk
53 Great Titchfield Street
London, W1W 7JP

32 Maple Street

