



LDG

BREWER STREET

Soho

£685,000      STC



Brewer Street





Energy Efficiency Rating		
	Current	Potential
Very energy efficient - lower running costs		
(92 plus) <b>A</b>		
(81-91) <b>B</b>		
(69-80) <b>C</b>	74	81
(55-68) <b>D</b>		
(39-54) <b>E</b>		
(21-38) <b>F</b>		
(1-20) <b>G</b>		
Not energy efficient - higher running costs		
<b>England &amp; Wales</b>	EU Directive 2002/91/EC	



Brewer Street





## ADDRESS

Brewer Street, London

## POSTCODE

W1F 0RD

## THE SPACE

Situated in the heart of Soho, this spacious loft-style studio/one-bedroom apartment epitomizes contemporary urban living. The open-plan design seamlessly connects a generous reception area to a separate sleeping zone.

Featuring a separate kitchen, ample storage, and a modern shower room, convenience is paramount. Positioned on the second floor of a small building with smart communal areas, the property offers views over Tisbury Court.

Surrounded by a rich tapestry of history, entertainment, and iconic destinations, this stylish apartment is the perfect haven for those seeking to immerse themselves in the essence of Soho living.

## ACCOMMODATION & FEATURES

- Large Reception
- Good Storage
- Separate Kitchen
- Large Windows
- Long Lease
- Heart of Soho

## ON YOUR DOORSTEP

Piccadilly Circus 400m  
Elizabeth Line 450m

## PRICE

£685,000, subject to contract

## TENURE

Leasehold - 145 years remaining

## SERVICE CHARGE

£3,525.64

## GROUND RENT

Peppercorn

## COUNCIL TAX

Westminster City Council Band E

## RESIDENTS PARKING

TBC

## COMMUTE

Bar Lina

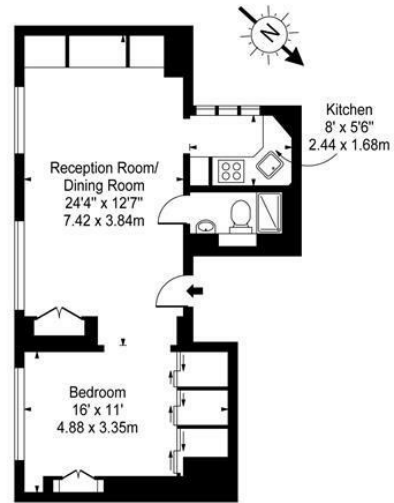
The French House

Kiln

Bocca di Lupo

The Devonshire

**Brewer Street, W1**  
 Approx. Gross Internal Area 540 Sq Ft - 50.17 Sq M



Second Floor

For Illustration Purposes Only - Not To Scale Floor Plan by [www.pixandplans.com](http://www.pixandplans.com) Ref: No.10364

This floor plan should be used as a general outline for guidance only and do not constitute in whole or in part an offer or contract.  
 Any intending purchaser or lessee should satisfy themselves by inspection, searches, enquiries and full survey as to the correctness of each statement.  
 Any areas, measurements or distances quoted are approximate and should not be used to value a property or be the basis of any sale or let.

Ready to talk?



**BEN  
EVEREST**

DD: 020 7290 0592  
M: 07944 967637  
E: ben@ldg.co.uk



**DAVID  
CALDEIRA**

DD: 020 4513 6756  
M: 07368 333 545  
E: david@ldg.co.uk



**EMLYN  
YOUNG**

DD: 020 7290 0593  
M: 07881 971 315  
E: emlyn@ldg.co.uk

LDG | [www.ldg.co.uk](http://www.ldg.co.uk)  
53 Great Titchfield Street  
London, W1W 7PJ

**Brewer Street**

