



LDG

34-36 BERNERS STREET
Fitzrovia



34-36 Berners Street







ADDRESS	POSTCODE	LOCAL AUTHORITY	RENT
34-36 Berners Street, London	W1T 3LU	Westminster City Council	£750 Per Week

THE SPACE

Two double bedroom apartment with separate kitchen situated on the first floor of this mansion block (with lift), moments from the Berners hotel & all the amenities of Charlotte Street.

The apartment has high ceilings, is very bright and benefits from a large double bedroom with fitted wardrobes, second double bedroom, good size reception room and separate kitchen.

Surrounded by a wealth of shops and restaurants you are just moments from Oxford Street and the whole of the West End. Tottenham Court Road and Goodge Street stations are a short stroll away, offering convenient access to the City and Canary Wharf.

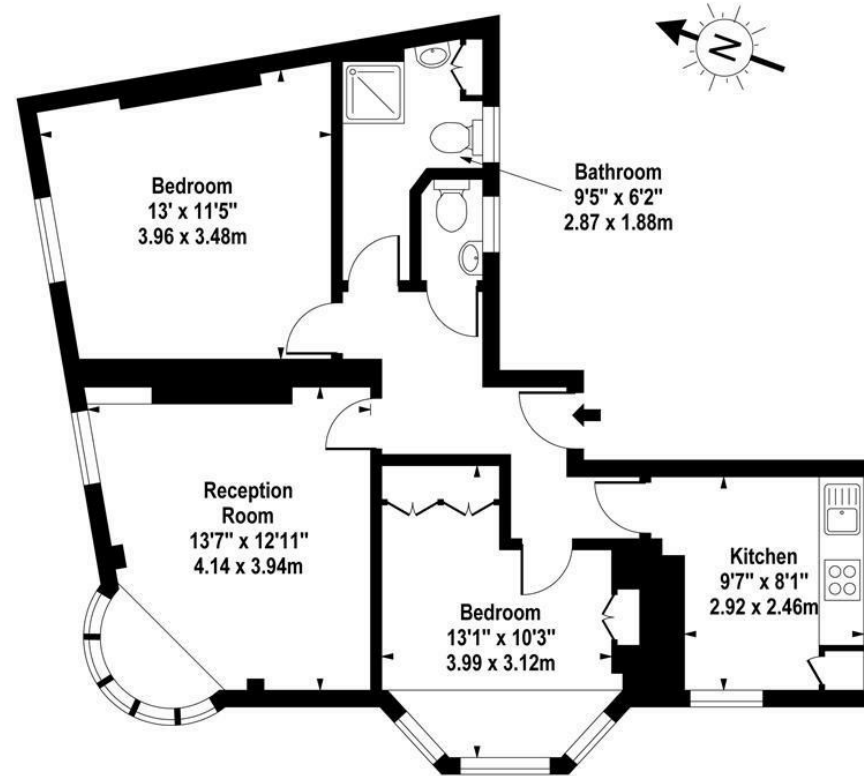
Specifics

ACCOMMODATION & FEATURES	COMMUTE	ON YOUR DOORSTEP
<ul style="list-style-type: none"> • Available 30th July '24 • Period Features • Two Double Bedrooms • Separate Kitchen • Wooden Flooring • Furnished • Central Fitzrovia • Managed by LDG 	<p>Goodge Street - 350m</p> <p>Oxford Circus - 650m</p> <p>Tottenham Court Road - 700m</p>	<p>Roka</p> <p>Thai Metro</p> <p>Home Slice</p> <p>Kaffeine</p> <p>Riding House Café</p> <p>Stadium Body Works</p> <p>The Regents Park</p>

34-36 Berners Street

Berners Mansions, Berners Street, W1T 3LU

Approx. 708 sq. feet (65.77 sq. metres)



First Floor

For Illustration Purposes Only - Not To Scale
www.goldlens.co.uk
Ref. No. 001905

ldg.co.uk



Ready to talk?



**MAX
CHAUDRY**

DD: 020 7291 0998
M: 07756 873938
E: max@ldg.co.uk



**VAS
VASILOKONSTANTAKIS**

DD: 020 7292 0990
M: 07809 410 252
E: vas@ldg.co.uk



**THEMIS
POLLALIS**

DD: 020 4513 6751
M: 07809 410 182
E: themis@ldg.co.uk

LDG | www.ldg.co.uk
53 Great Titchfield Street
London, W1W 7JP

34-36 Berners Street

