



LDG

9 HUNTLEY STREET  
Bloomsbury



9 Huntley Street







## ADDRESS

9 Huntley Street, London

## POSTCODE

WC1E 6AJ

## THE SPACE

A large apartment located on the second floor with lift access in this sought after, secure development with a Porter on Huntley Street, Bloomsbury.

In the block, there is one apartment per floor which offers a sense of privacy. There is a large reception room with a modern open-plan kitchen, a master bedroom with access to a balcony as well as an en suite shower room and a walk-in dressing room. There is a further double bedroom with built-in wardrobes and a family bathroom. There is wooden flooring throughout the reception and hallway, carpet in the bedrooms and the apartment is furnished beautifully throughout. One off street parking space is available at additional cost.

Huntley Street is located in the popular Bloomsbury area and is just a short walk to the local cafes, shops and restaurants nearby and Tottenham Court Road and Goodge Street Underground stations. Fitzrovia, Soho and Covent Garden are also just a short walk away.

## RENT

£895 Per Week

## LOCAL AUTHORITY

Camden Council

## ACCOMMODATION

### & FEATURES

- Available 20th June
- Spacious Apartment
- Open-plan kitchen
- Wooden flooring
- Furnished
- Balcony
- Daytime porter
- Parking Space Available at Extra Cost

## COMMUTE

Goodge Street (320m)

Warren Street (640)

Tottenham Court Road (640m)

## ON YOUR DOORSTEP

Gaicho

Thai Metro

Store Street Espresso

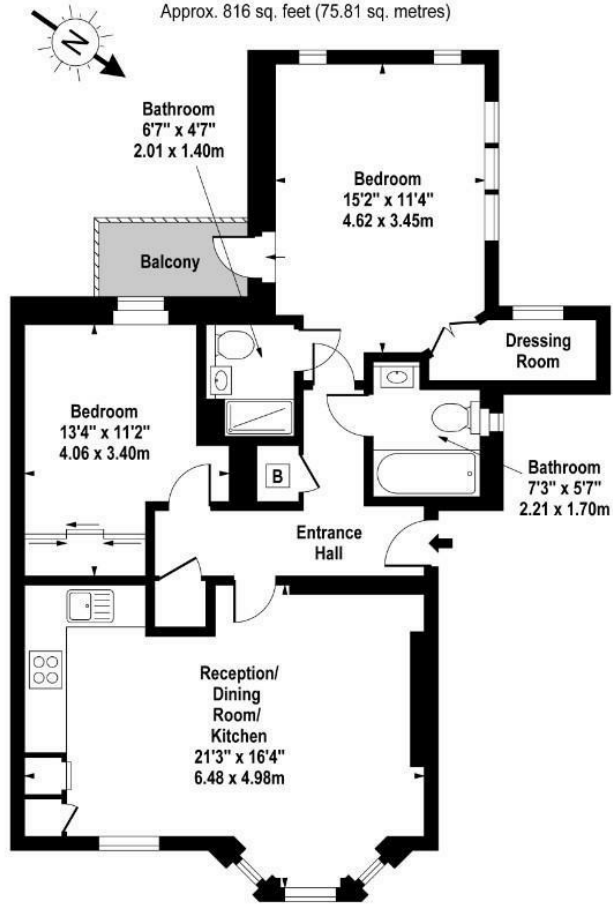
Fitness First

Pure Gym

Regents Park

**Bloomsbury Terrace,  
Huntley Street,  
Bloomsbury, WC1E 6AJ**

Approx. 816 sq. feet (75.81 sq. metres)



**Second Floor**

For Illustration Purposes Only - Not To Scale  
www.goldlens.co.uk  
Ref. No. 003603M

ldg.co.uk

Ready to talk?



**MAX  
CHAUDRY**

DD: 020 7291 0998  
M: 07756 873938  
E: max@ldg.co.uk



**VAS  
VASILOKONSTANTAKIS**

DD: 020 7292 0990  
M: 07809 410 252  
E: vas@ldg.co.uk



**THEMIS  
POLLALIS**

DD: 020 4513 6751  
M: 07809 410 182  
E: themis@ldg.co.uk