



LDG

1-3 LITTLE TITCHFIELD  
Fitzrovia



1-3 Little Titchfield Street











<b>ADDRESS</b>	<b>POSTCODE</b>	<b>LOCAL AUTHORITY</b>	<b>RENT</b>
1-3 Little Titchfield Street, London W1W 7BU	W1W 7BU	Westminster Council	£550 Per Week

### THE SPACE

A fantastic apartment which is location in a residential block on Little Titchfield Street, W1. The apartment offers contemporary furniture, wooden flooring, a separate kitchen, a bright and airy reception room, double bedroom and a modern bathroom suite.

Located on the Little Titchfield Street, this lovely apartment also benefits from being only few doors away from trendy cafés, restaurants and gastro pubs, as well as local amenities of Charlotte and Great Portland Streets, along with strolling distance from Regents Park. Goodge Street and Oxford Circus underground stations are also close by so is the Marylebone, Soho, Covent Garden, Bloomsbury and Mayfair areas.

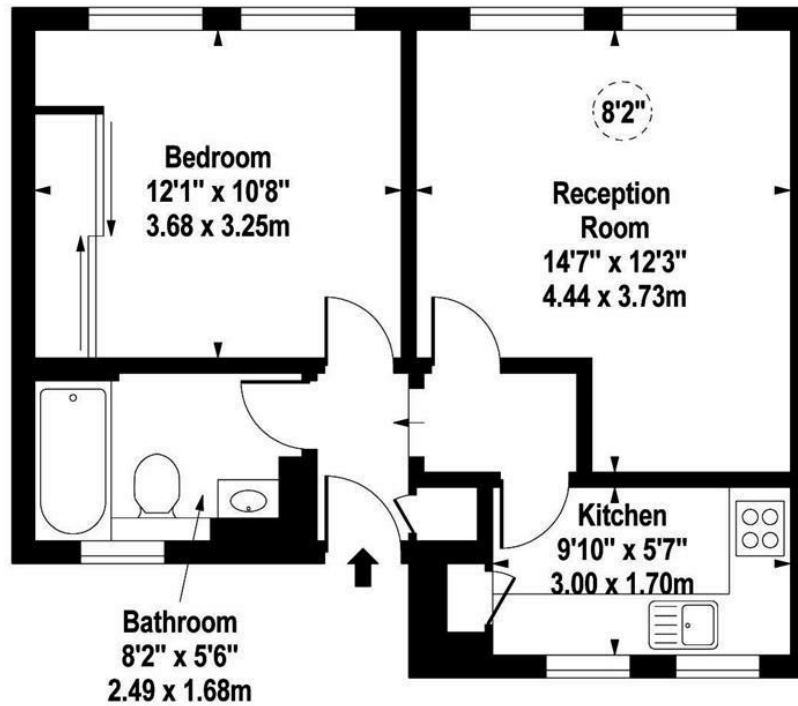
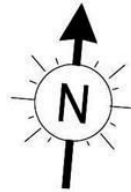
Specifics

<b>ACCOMMODATION &amp; FEATURES</b>	<b>COMMUTE</b>	<b>ON YOUR DOORSTEP</b>
<ul style="list-style-type: none"> <li>• Available 31st May '24</li> <li>• Spacious Reception Room</li> <li>• Separate Kitchen</li> <li>• Large Windows</li> <li>• Furnished</li> <li>• Wooden Flooring</li> <li>• Close to Oxford Circus</li> <li>• Close to Regents Park</li> </ul>	<p>Oxford Circus - 480m</p> <p>Goodge Street - 640m</p>	<p>Kaffeine</p> <p>Riding House Cafe</p> <p>Naroon</p> <p>Kings Arms</p> <p>Pure Gym</p> <p>The Regents Park</p>

**1-3 Little Titchfield Street**

## Little Titchfield Street, W1W 7BU

Approx. 455 sq. feet (42.27 sq. metres)



### Second Floor

For Illustration Purposes Only - Not To Scale

[www.goldlens.co.uk](http://www.goldlens.co.uk)

Ref. No. 013332E

[ldg.co.uk](http://ldg.co.uk)



Ready to talk?



**MAX  
CHAUDRY**

DD: 020 7291 0998  
M: 07756 873938  
E: max@ldg.co.uk



**VAS  
VASILOKONSTANTAKIS**

DD: 020 7292 0990  
M: 07809 410 252  
E: vas@ldg.co.uk



**THEMIS  
POLLALIS**

DD: 020 4513 6751  
M: 07809 410 182  
E: themis@ldg.co.uk

LDG | [www.ldg.co.uk](http://www.ldg.co.uk)  
53 Great Titchfield Street  
London, W1W 7JP

1-3 Little Titchfield Street

