



LDG

HARROWBY STREET  
Marylebone



Harrowby Street









ADDRESS	POSTCODE	LOCAL AUTHORITY	RENT
Harrowby Street, Marylebone	W1H 5HB	Westminster	£650 Per Week

### THE SPACE

This delightful and well lit two-bedroom, newly decorated apartment is located within a highly sought-after, secure, portered residential block in Marylebone.

The property is situated on the third floor with elevator access and it offers neutral finish, a fully equipped separate kitchen, a tiled bathroom, an additional WC and two equally spacious bedrooms with ample storage.

Specifics

### ACCOMMODATION

#### & FEATURES

- Available Now
- Furnished
- Two Double Bedrooms
- Portered Building
- Lift Access
- Separate Kitchen
- Guest WC
- Close to Hyde Park

### COMMUTE

Edgware Road - 482m  
Marble Arch - 804m

### ON YOUR DOORSTEP

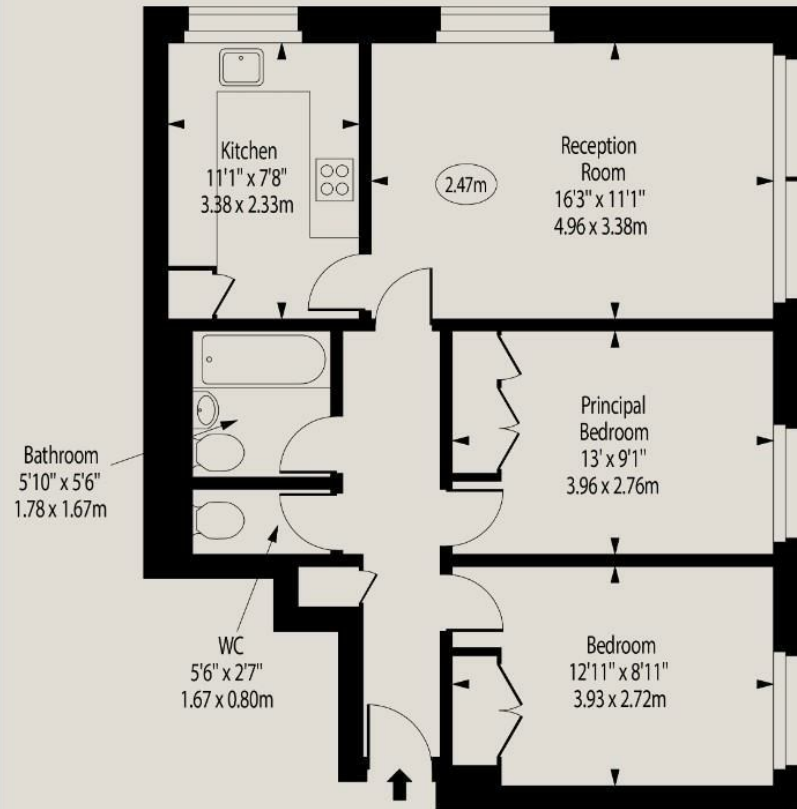
The Grazing Goat  
Locanda Locatelli  
Lura  
Gails  
TOKii  
Hyde Park

Harrowby Street

Landward Court,  
Harrowby Street, W1H 5HB

Gross Internal Area 650 sq. feet (60.39 sq. metres)

○ - Ceiling Height



Third Floor

For Illustration Purposes Only - Not To Scale  
www.goldlens.co.uk  
Ref. No. 023340MS

Floor Plan



Ready to talk?



**MAX  
CHAUDRY**

DD: 020 7291 0998  
M: 07756 873938  
E: max@ldg.co.uk



**VAS  
VASILOKONSTANTAKIS**

DD: 020 7292 0990  
M: 07809 410 252  
E: vas@ldg.co.uk



**THEMIS  
POLLALIS**

DD: 020 4513 6751  
M: 07809 410 182  
E: themis@ldg.co.uk

LDG | [www.ldg.co.uk](http://www.ldg.co.uk)  
53 Great Titchfield Street  
London, W1W 7JP

**Harrowby Street**

