



LDG

HARROWBY STREET
Marylebone



Harrowby Street







ADDRESS	POSTCODE	LOCAL AUTHORITY	RENT
Harrowby Street, Marylebone	W1H 5HB	Westminster	£650 Per Week

THE SPACE

This delightful and well lit two-bedroom, newly decorated apartment is located within a highly sought-after, secure, portered residential block in Marylebone.

The property is situated on the third floor with elevator access and it offers neutral finish, a fully equipped separate kitchen, a tiled bathroom, an additional WC and two equally spacious bedrooms with ample storage.

Specifics

ACCOMMODATION

& FEATURES

- Available Now
- Furnished
- Two Double Bedrooms
- Portered Building
- Lift Access
- Separate Kitchen
- Guest WC
- Close to Hyde Park

COMMUTE

Edgware Road - 482m
Marble Arch - 804m

ON YOUR DOORSTEP

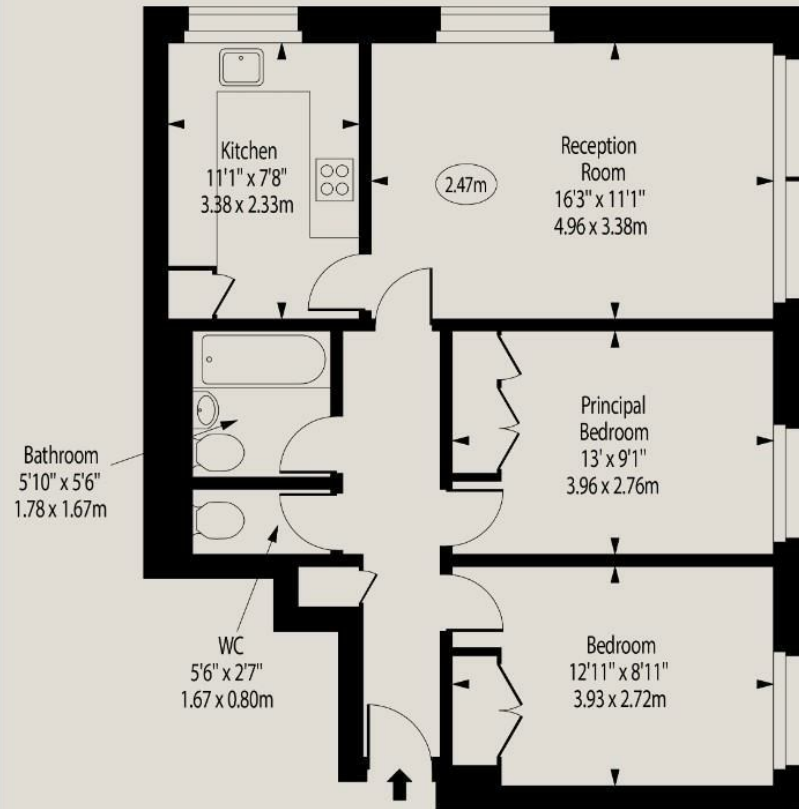
The Grazing Goat
Locanda Locatelli
Lura
Gails
TOKii
Hyde Park

Harrowby Street

Landward Court,
Harrowby Street, W1H 5HB

Gross Internal Area 650 sq. feet (60.39 sq. metres)

○ - Ceiling Height



Third Floor

For Illustration Purposes Only - Not To Scale
www.goldlens.co.uk
Ref. No. 023340MS

Floor Plan



Ready to talk?



**MAX
CHAUDRY**

DD: 020 7291 0998
M: 07756 873938
E: max@ldg.co.uk



**VAS
VASILOKONSTANTAKIS**

DD: 020 7292 0990
M: 07809 410 252
E: vas@ldg.co.uk



**THEMIS
POLLALIS**

DD: 020 4513 6751
M: 07809 410 182
E: themis@ldg.co.uk

LDG | www.ldg.co.uk
53 Great Titchfield Street
London, W1W 7JP

Harrowby Street

