



LDG

6 COSWAY STREET  
Marylebone



6 Cosway Street







ADDRESS	POSTCODE	LOCAL AUTHORITY	RENT
6 Cosway Street, London	NW1 5NR	Westminster City Council	£519 Per Week

## THE SPACE

A recently refurbished apartment situated in a charming period conversion close to Marylebone station. This property has been beautifully furnished and comprises a bright reception room with an open-plan, fully equipped kitchen, a double bedroom, a separate study room and a shower room.

Cosway Street is located just a few minutes walk away from Marylebone station and also close to Baker Street and Edgware Road stations. All shops and bars of Marylebone are within a short walk, as well as the beautiful Regents Park.

Specifics

## ACCOMMODATION

### & FEATURES

- Available Now
- Recently Refurbished
- Open-Plan Kitchen
- Double Bedroom
- Separate Study
- Furnished
- Wooden Flooring
- Managed by LDG

## COMMUTE

Marylebone - 322m  
Edgware Road - 322m  
Baker Street - 644m

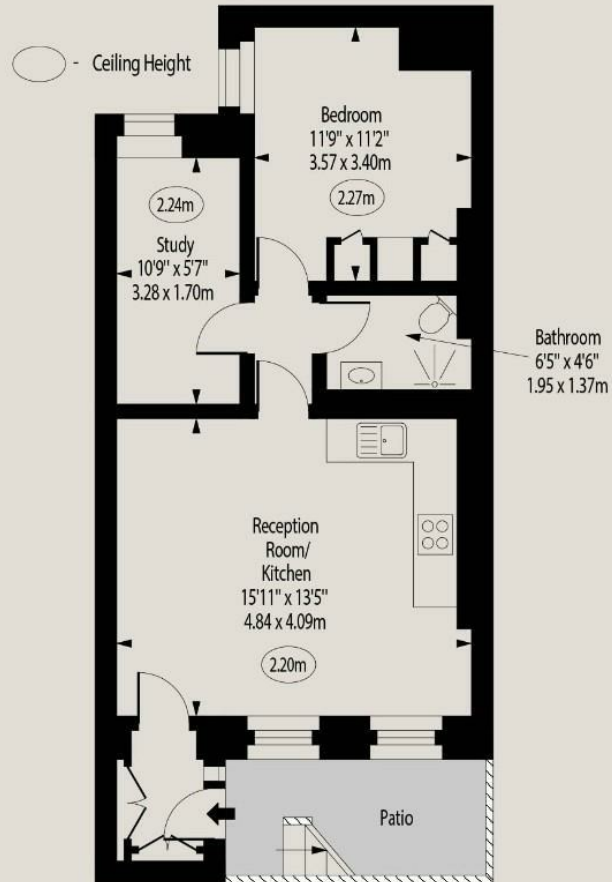
## ON YOUR DOORSTEP

Firebrand Pizza  
Briciole  
Gino's Coffee Bar  
Regents Bar and Kitchen

6 Cosway Street

Cosway Street,  
Marylebone, NW1 5NR

Approx. 485 sq. feet (45.06 sq. metres)



Lower Ground Floor

For Illustration Purposes Only - Not To Scale  
[www.goldlens.co.uk](http://www.goldlens.co.uk)  
Ref. No. 020141R

Ready to talk?



MAX  
CHAUDRY

DD: 020 7291 0998  
M: 07756 873938  
E: max@ldg.co.uk



VAS  
VASILOKONSTANTAKIS

DD: 020 7292 0990  
M: 07809 410 252  
E: vas@ldg.co.uk



THEMIS  
POLLALIS

DD: 020 4513 6751  
M: 07809 410 182  
E: themis@ldg.co.uk

LDG | [www.ldg.co.uk](http://www.ldg.co.uk)  
53 Great Titchfield Street  
London, W1W 7JP

6 Cosway Street

