



LDG

CLIPSTONE STREET  
Fitzrovia



Clipstone Street







ADDRESS	POSTCODE	LOCAL AUTHORITY	RENT
Clipstone Street, London	W1W 5DF	Westminster City Council	£507 Per Week

### THE SPACE

A bright and spacious, apartment set on the 4th floor of this purpose built block located in the heart of Fitzrovia. With wooden flooring, floor to ceiling windows, an open-plan kitchen and a communal balcony. Rent includes heating and hot water.

Situated close to Regents Park and Great Portland Street underground stations with only a few minutes walk from London's most famous shopping district, Oxford Street. The local bars and restaurants of Fitzrovia and Marylebone Village are also close by.

Specifics

### ACCOMMODATION

#### & FEATURES

- Available 23rd of April
- Heating and Hot Water Included
- Open-Plan Kitchen
- Spacious Apartment
- Furnished
- Laminate Flooring
- Balcony
- Managed by LDG

### COMMUTE

Great Portland Street - 480m  
Warren Street - 640m  
Oxford Circus - 800m

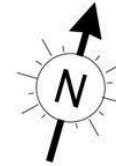
### ON YOUR DOORSTEP

Riding House Café  
Caravan  
Santa Maria  
Alex Coffee  
Pure Gym  
The Regents Park

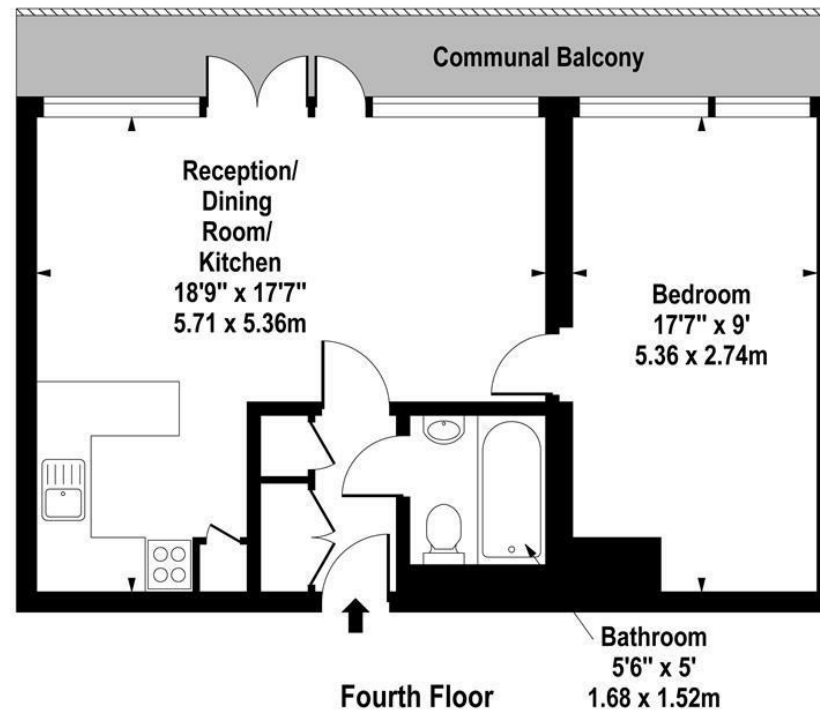
Clipstone Street

**Holcroft Court,  
Clipstone Street,  
Fitzrovia, W1W 5DF**

Approx. 500 sq. feet (46.45 sq. metres)



Floor Plan



For Illustration Purposes Only - Not To Scale

[www.goldlens.co.uk](http://www.goldlens.co.uk)

Ref. No. 007003K

[ldg.co.uk](http://ldg.co.uk)

Clipstone Street

Ready to talk?



**MAX  
CHAUDRY**

DD: 020 7291 0998  
M: 07756 873938  
E: max@ldg.co.uk



**VAS  
VASILOKONSTANTAKIS**

DD: 020 7292 0990  
M: 07809 410 252  
E: vas@ldg.co.uk



**THEMIS  
POLLALIS**

DD: 020 4513 6751  
M: 07809 410 182  
E: themis@ldg.co.uk