



LDG

37 RATHBONE PLACE
Fitzrovia



37 Rathbone Place







ADDRESS	POSTCODE	LOCAL AUTHORITY	RENT
37 Rathbone Place, London	W1T 1JN	Westminster	£1,100 Per Week

THE SPACE

A superb apartment located in this modern development (with lift & concierge) moments away from the buzzing Charlotte Street in Fitzrovia, W1. Offering a modern open-plan kitchen, modern bathroom, wooden flooring and a balcony.

The apartment has a spacious open-plan reception room with a modern fully fitted kitchen leading to a private balcony, bedroom with built-in wardrobes and a separate bathroom. The apartment is furnished with contemporary furniture, has wooden flooring in the living room, glazed windows, lift access and a secure video entry system.

Suitably positioned on the borders of Fitzrovia and Soho this absorbing location offers an easy reach to some of London's most sought after restaurants and bars, A stone's throw away from a generous choice of independent and mainstream galleries and museums. Rathbone Place is moments from the relaxing café and restaurant culture of Charlotte Street whilst nearby Tottenham Court Road underground station offers easy access to the City and Canary Wharf.

Specifics

ACCOMMODATION

& FEATURES

- Available Now
- Modern Development
- Third Floor with Lift
- Furnished
- Open- plan kitchen
- Private Balcony
- 24hr Concierge
- Resident's gym and swimming pool

COMMUTE

Tottenham Court Road - 160m
 Oxford Circus - 482m
 Goodge Street - 644m

ON YOUR DOORSTEP

Thai Metro
 Gaucho
 Studium Body Works
 Berners Tavern
 Charlotte Street Hotel
 Regents Park

37 Rathbone Place

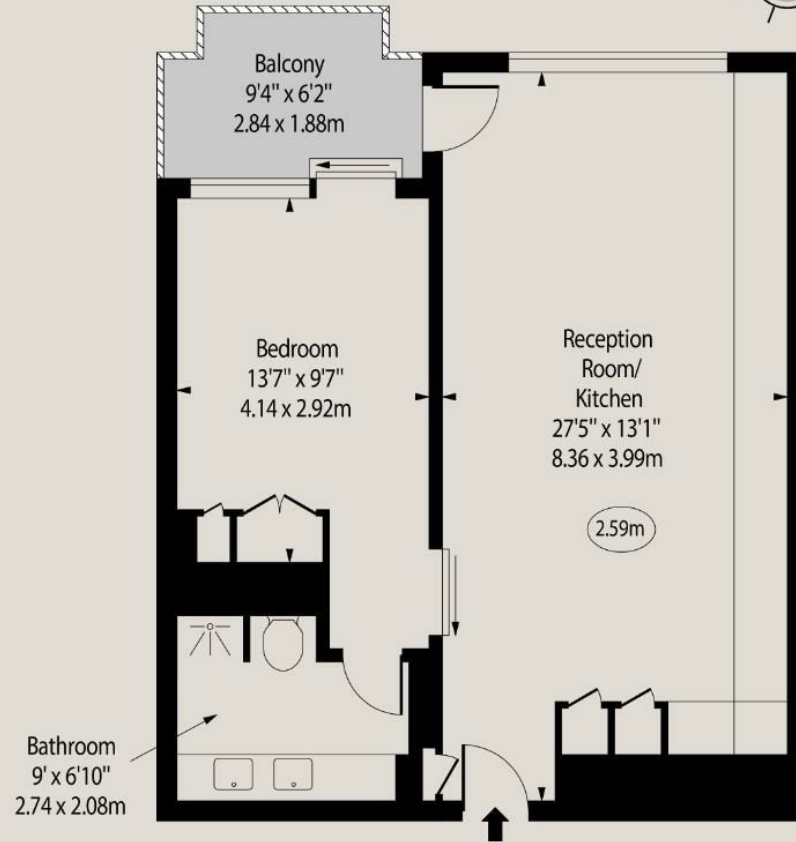
Rathbone Place,
Fitzrovia, W1T 1JN

Approx. Area 570 sq. feet (52.95 sq. metres)

○ - Ceiling Height



Floor Plan



Third Floor

For Illustration Purposes Only - Not To Scale

www.goldlens.co.uk

Ref. No. 022085E

37 Rathbone Place



Ready to talk?



**MAX
CHAUDRY**

DD: 020 7291 0998
M: 07756 873938
E: max@ldg.co.uk



**VAS
VASILOKONSTANTAKIS**

DD: 020 7292 0990
M: 07809 410 252
E: vas@ldg.co.uk



**THEMIS
POLLALIS**

DD: 020 4513 6751
M: 07809 410 182
E: themis@ldg.co.uk

LDG | www.ldg.co.uk
53 Great Titchfield Street
London, W1W 7JP

37 Rathbone Place

