



LDG

WIMPOLE STREET
Marylebone
£1,700,000 STC



Wimpole Street









Energy Efficiency Rating		
	Current	Potential
<i>Very energy efficient - lower running costs</i>		
(92 plus) A		<div style="display: flex; align-items: center; justify-content: center;"> ← 72 → </div>
(81-91) B		
(69-80) C		
(55-68) D		
(39-54) E		
(21-38) F		
(1-20) G		
<i>Not energy efficient - higher running costs</i>		
England & Wales	EU Directive 2002/91/EC	

**ADDRESS**

Wimpole Street, London

POSTCODE

W1G 8YE

THE SPACE

With high ceilings, period features and a sense of grandeur, this elegant property is situated on the 2nd floor of a handsome Grade II Georgian building in the heart of Marylebone.

Unusually large (1120 sq. ft) for a single floor lateral apartment, the accommodation includes a spacious reception room with bay windows, a smart open plan kitchen, two large double bedrooms and two bathrooms.

One of just six apartments in the building, there is the benefit of Share of Freehold and low service charge.

Only a 2-minute walk from Marylebone High Street, this is the ideal home to immerse yourself in everything that this vibrant neighbourhood has to offer.

ACCOMMODATION**& FEATURES**

- High Ceilings
- Spacious
- Large Reception Room
- Mowlem & Co Kitchen
- Two Bedrooms
- Two Bathrooms
- Share of Freehold
- Second Floor

ON YOUR DOORSTEP

108 Marylebone Lane
Ottolenghi
The Coach Makers Arms
Carlotta
31 Below
The Wallace Collection
The Regents Park

PRICE

£1,700,000, subject to contract

TENURE

Leasehold - Share of Freehold - 992 years remaining

SERVICE CHARGE

£2,400.00

GROUND RENT

£0.00

COUNCIL TAX

Westminster Band G

RESIDENTS PARKING

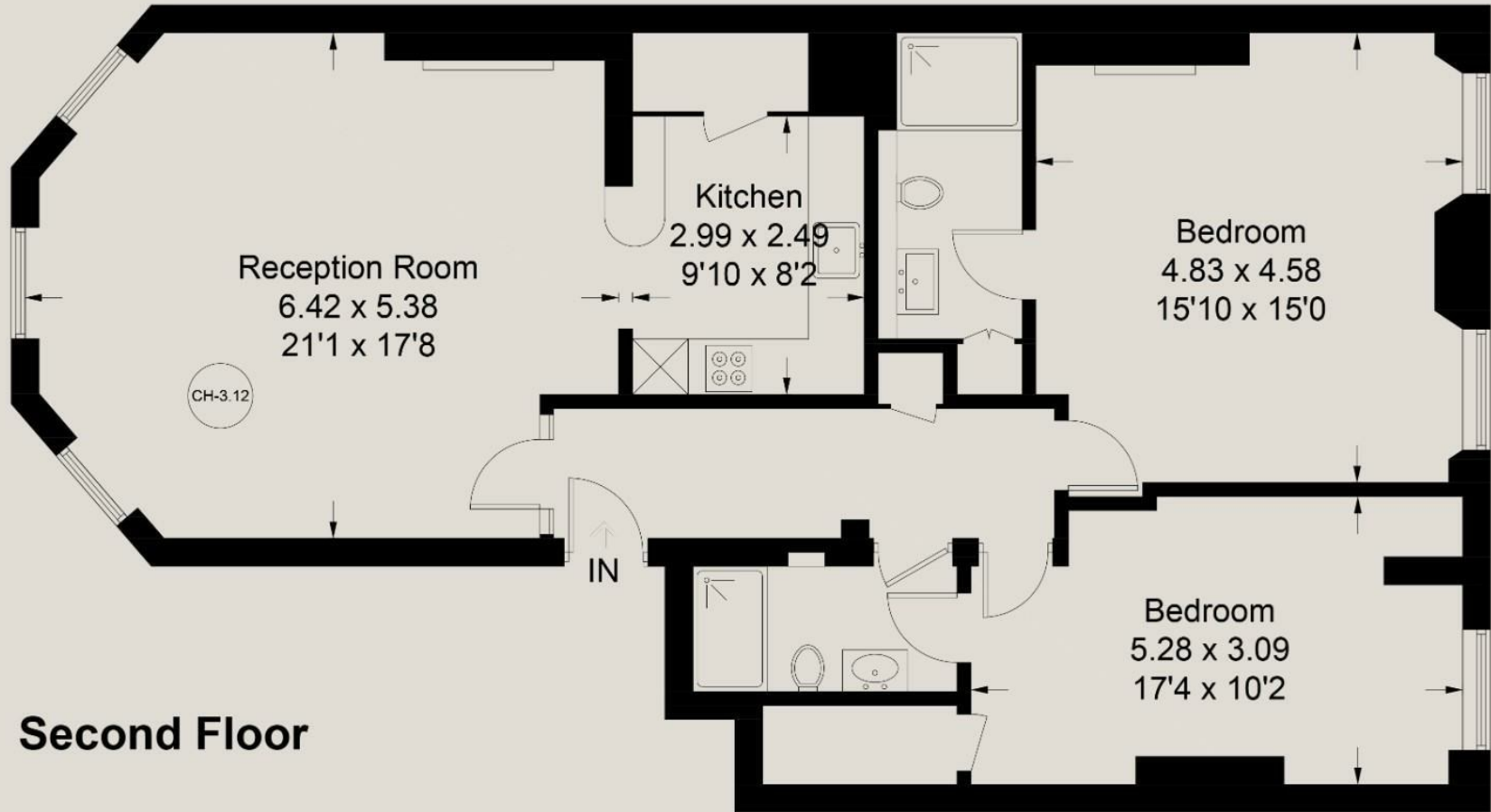
Residents parking - F Zone

COMMUTE

Bond Street Station (Crossrail)
Oxford Circus Station
Regents Park Station
Great Portland Street Station
Baker Street

Wimpole Street

Approximate Gross Internal Area = 102.8 sq m / 1106 sq ft



Second Floor

Illustration for identification purposes only, measurements are approximate, not to scale. floorplansUsketch.com © (ID1000865)

Ready to talk?



**BEN
EVEREST**

DD: 020 7290 0592
M: 07944 967637
E: ben@ldg.co.uk



**DAVID
CALDEIRA**

DD: 020 4513 6756
M: 07368 333 545
E: david@ldg.co.uk



**EMLYN
YOUNG**

DD: 020 7290 0593
M: 07881 971 315
E: emlyn@ldg.co.uk



**DEE
LY**

DD: 020 4542 4872
T 020 7580 1010
E: dee@ldg.co.uk