



LDG

18A OLD COMPTON STREET
Soho



18a Old Compton Street









ADDRESS

18a Old Compton Street, London

POSTCODE

W1D 4TN

THE SPACE

Welcome to your modern oasis in the heart of SoHo,
Welcome to your modern oasis in the heart of SoHo, nestled on the vibrant Old Compton Street. This newly refurbished apartment offers a harmonious blend of contemporary design and urban convenience, providing the perfect backdrop for your metropolitan lifestyle.

Fabulous Features

- Two double bedrooms (twinning!) with comfy king size beds and built-in wardrobes.
- Light, airy living room featuring Smart TV with Media Hub (don't forget your Netflix password), plus snuggly sofa bed
- Dining table with space for 4 fabulous people
- Chic, modern kitchen brimming with new appliances, including electric oven, washing machine, dishwasher, Nespresso coffee machine, toaster, and kettle
- Contemporary bathroom with walk-in shower
- Complimentary Google juice! Plug in, the wi-fi is on us. Sing it with us, Wi believe I can Fi...
- Because size matters, your apartment is a generous 538 SQ FT/50 SQ MT - plenty of wiggle room to work and twerk
- There's no utility bill's to pay, that's on Frankie!

RENT

£1,385 Per Week

LOCAL AUTHORITY

Westminster City Council

ACCOMMODATION

& FEATURES

- Three Months Lets
- Flexi stays (short, medium and Long term stays)
- Serviced Apartments
- Amazing Location
- All Utilities Included
- Wi-fi Included
- Fully Furnished
- Open-Plan Kitchen
- Fully Managed
- Selection of 1 and 2 Bedroom Apartments Available

COMMUTE

Tottenham Court Road - 320m

Covent Garden - 480m

Leicester Square - 320m

ON YOUR DOORSTEP

Frankie Says says ...maps, don't do it! This is where the Good Stuff's at:

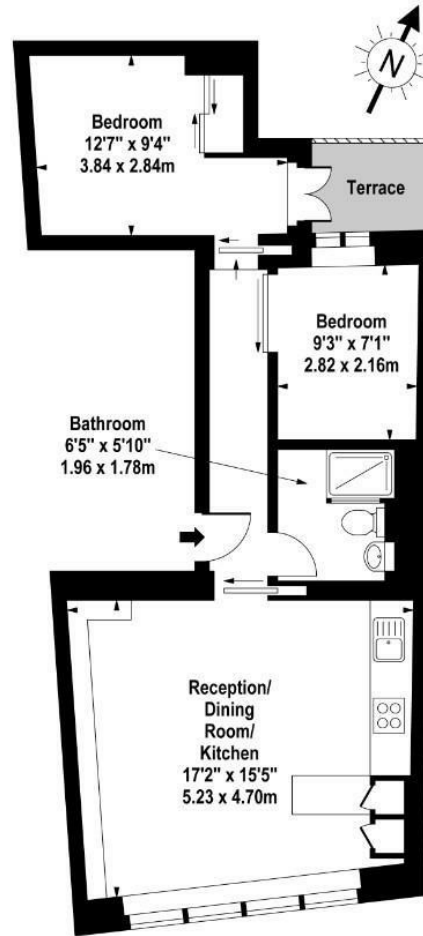
Whether you're sightseeing, shopping or simply hanging out being fabulous, our apartment is the perfect spot to immerse yourself in London life. Located in the heart of the West End, Soho is the go-to neighbourhood for a good time.

For sightseeing, Soho is also a short tube ride from must-see destinations, including Buckingham Palace, Trafalgar Square, Big Ben, the London Eye, the Tower of London, plus many more.

And when those tootsies get tired, simply head home for some quality chill time.

Old Compton Street, W1D 4TN

Approx. 535 sq. feet (49.70 sq. metres)



First Floor

For Illustration Purposes Only - Not To Scale
www.goldlens.co.uk
Ref. No. 001814

ldg.co.uk



**MAX
CHAUDRY**

DD: 020 7291 0998
M: 0775 687 3938
E: max@ldg.co.uk



**VAS
VASILOKONSTANTAKIS**

DD: 020 7292 0990
M: 07809 410 252
E: vas@ldg.co.uk



**THEMIS
POLLALIS**

DD: 020 4513 6751
M: 07809 410 182
E: themis@ldg.co.uk



**EMLYN
YOUNG**

DD: 020 7290 0593
M: 07881 971 315
E: emlyn@ldg.co.uk



**MINETTE
RIBEIRO SA**

DD: 0207291 0997
M: 07796 427 363
E: minette@ldg.co.uk



**GEORGIE
MACKAY-STEWART**

DD: 020 4542 4873
M: 07551 780 308
E: georgie@ldg.co.uk



**MEGAN
BATTLE**

DD: 020 7290 0598
M: 07391 852 165
E: megan@ldg.co.uk



**SHANNON
TUPPER**

DD: 020 4513 6750
M: 07920 015 392
E: shannon@ldg.co.uk

Ready to talk?

LDG | www.ldg.co.uk
53 Great Titchfield Street
London, W1W 7PJ

18a Old Compton Street

