



112 FINCHLEY ROAD  
LONDON NW3 5HT  
INFO@RHWESTATES.CO.UK  
020 7431 7121

WWW.RHWESTATES.CO.UK



GREENCROFT GARDENS  
SOUTH HAMPSTEAD  
LONDON  
NW6 3LP

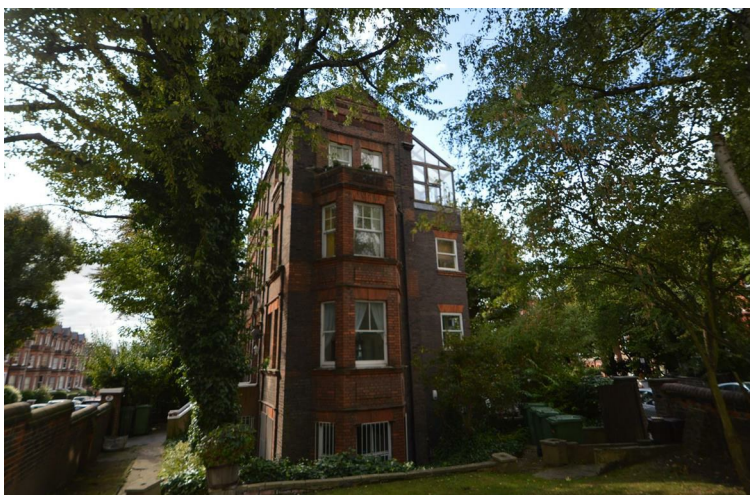
A superb 2 double bedroom flat on one of the finest roads in South Hampstead located moments from Finchley Road tube station and shopping facilities.

The property offers spacious living accommodation and has been recently decorated. The flat also benefits from wooden flooring in the reception & hallway, fully fitted kitchen and communal gardens.

**PRICE: £2,500 PCM**

**FURNISHED**



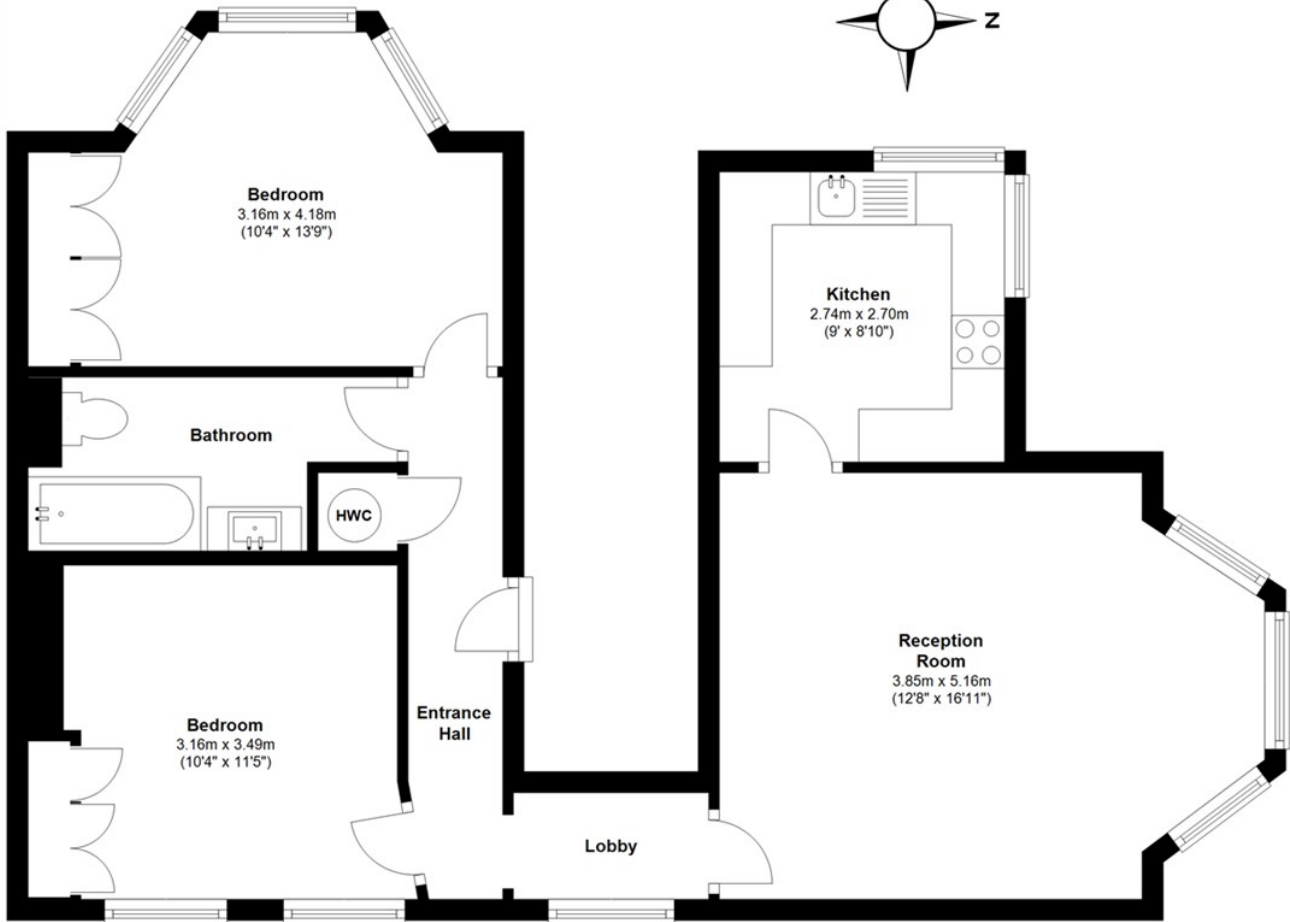


## FEATURES:


- 2 mins to Finchley Road Tube station
- 2 x Double Bedroom
- Spacious
- Furnished
- Communal Gardens

## First Floor

Approx. 62.0 sq. metres (666.9 sq. feet)



Total area: approx. 62.0 sq. metres (666.9 sq. feet)

Energy Efficiency Rating		
	Current	Potential
Very energy efficient - lower running costs		
(92 plus) <b>A</b>		
(81-91) <b>B</b>		78
(69-80) <b>C</b>		
(55-68) <b>D</b>	53	
(39-54) <b>E</b>		
(21-38) <b>F</b>		
(1-20) <b>G</b>		
Not energy efficient - higher running costs		
<b>England &amp; Wales</b>	EU Directive 2002/91/EC	

### IMPORTANT NOTICE

Whilst every attempt has been made to ensure the accuracy of these details and floor plans contained here, measurements of doors, windows and rooms are approximate and no responsibility is taken for any error, omission or misstatement. These plans and details are for representation only as defined by RICS code of measuring practice and should be used as such by any prospective tenant. Not to scale. Copyright: RHW Estates