



GODDARD PLACE
MONNERY ROAD
TUFNELL PARK
N19 5GS

*** VIDEO TOUR ***

A superb 2 double bedroom apartment within this modern development which is set behind a gated entrance.

The apartment benefits, 2 bathrooms (one en-suite), wood floors, fully fitted kitchen, private parking and communal gardens.

Located close to local amenities 5 mins from the Tufnell Park tube station.

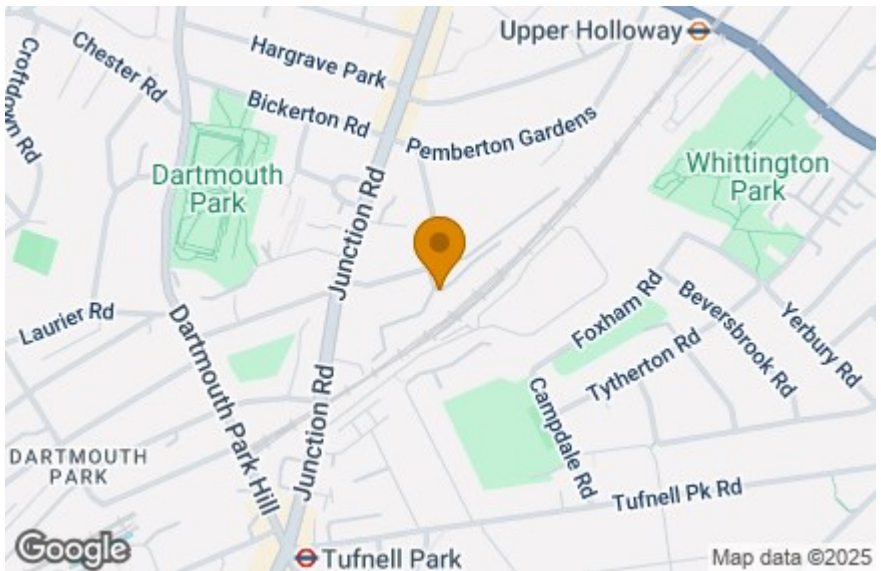
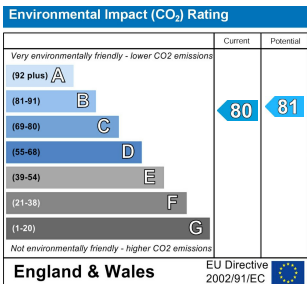
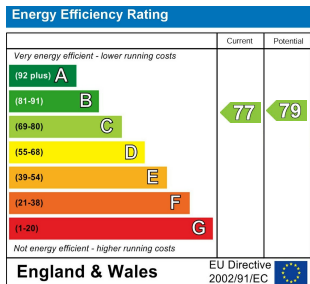
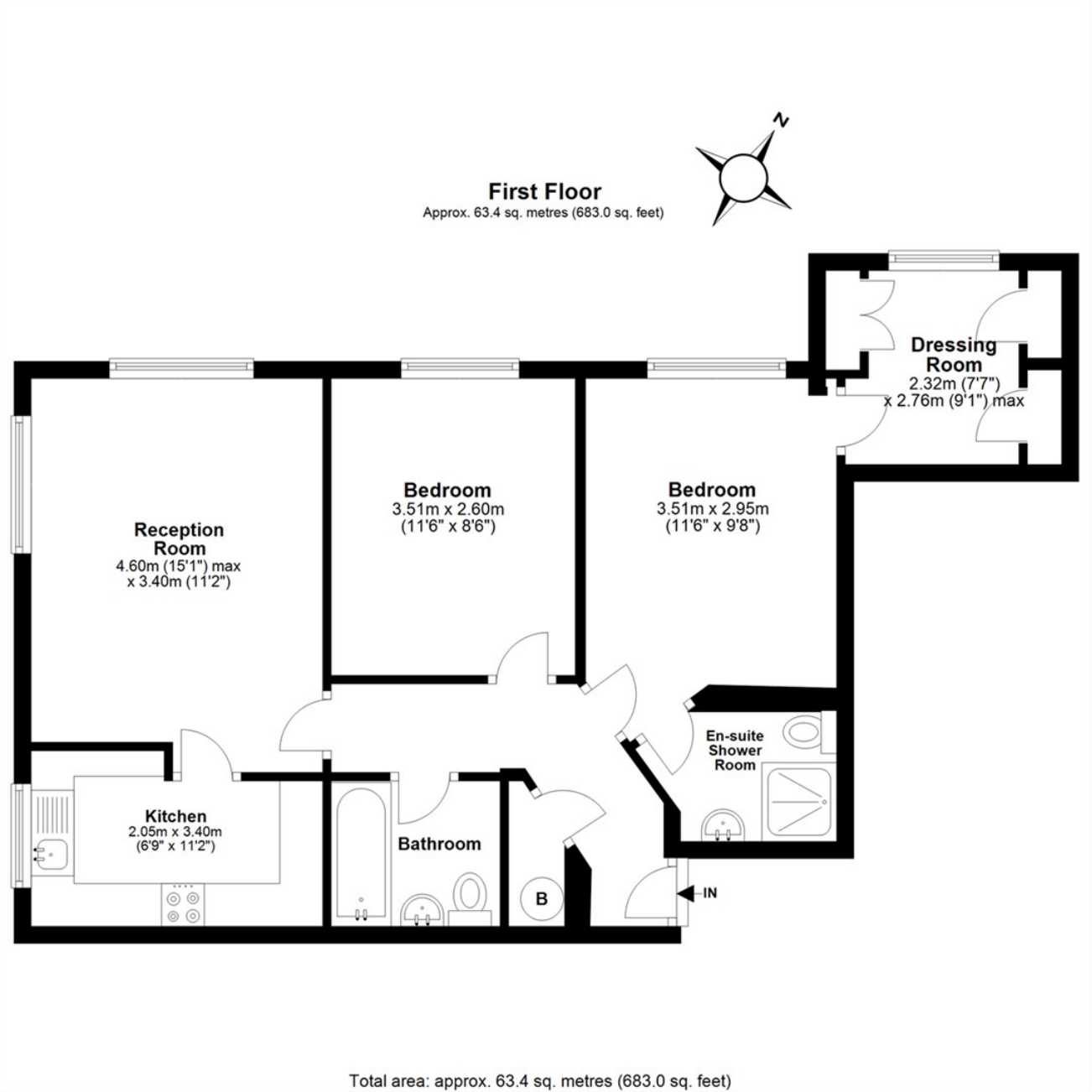
PRICE: £2,200 PCM

FURNISHED



FEATURES:

- Private Gated Development
- 2 x Double Bedrooms
- 2 Bathrooms (1en-suite)
- Furnished
- Off Street Parking Space



IMPORTANT NOTICE

Whilst every attempt has been made to ensure the accuracy of these details and floor plans contained here, measurements of doors, windows and rooms are approximate and no responsibility is taken for any error, omission or mis-statement. These plans and details are for representation only as defined by RICS code of measuring practice and should be used as such by any prospective purchaser.

Not to scale. Copyright: RHW Estates