



112 FINCHLEY ROAD
LONDON NW3 5HT
INFO@RHWESTATES.CO.UK
020 7431 7121

WWW.RHWESTATES.CO.UK



GOLDHURST TERRACE
SOUTH HAMPSTEAD
LONDON
NW6 3HU

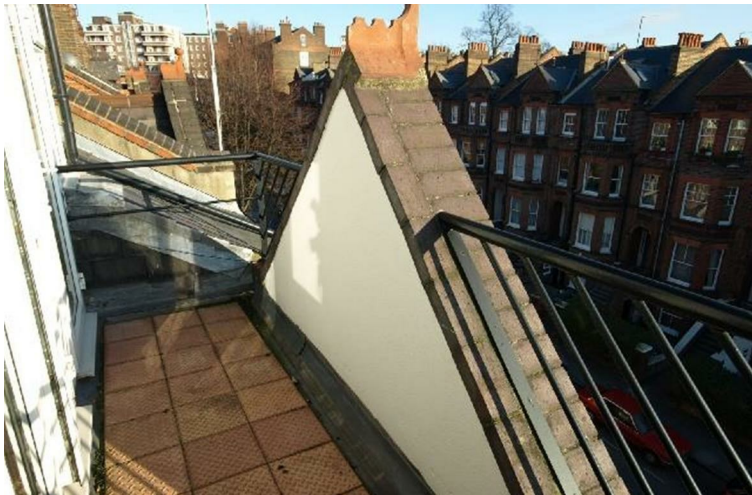
PRICE: £2,250 PCM

FURNISHED

We are delighted to offer as sole agents this 3rd floor (top) two bedroom conversions (1 double & 1 single bedroom) located at the Upper end (Finchley Road) of this popular address.

The flat is offered in good decorative order and is very bright and airy boasting two roof terraces at front and rear as well as multiple skylights. Rear reception room with wood flooring to roof terrace both bedrooms give access to the large front terrace/balcony, fully fitted kitchen and lovely bathroom/WC.

Independent gas central heating and double glazed windows throughout.
Fully furnished.



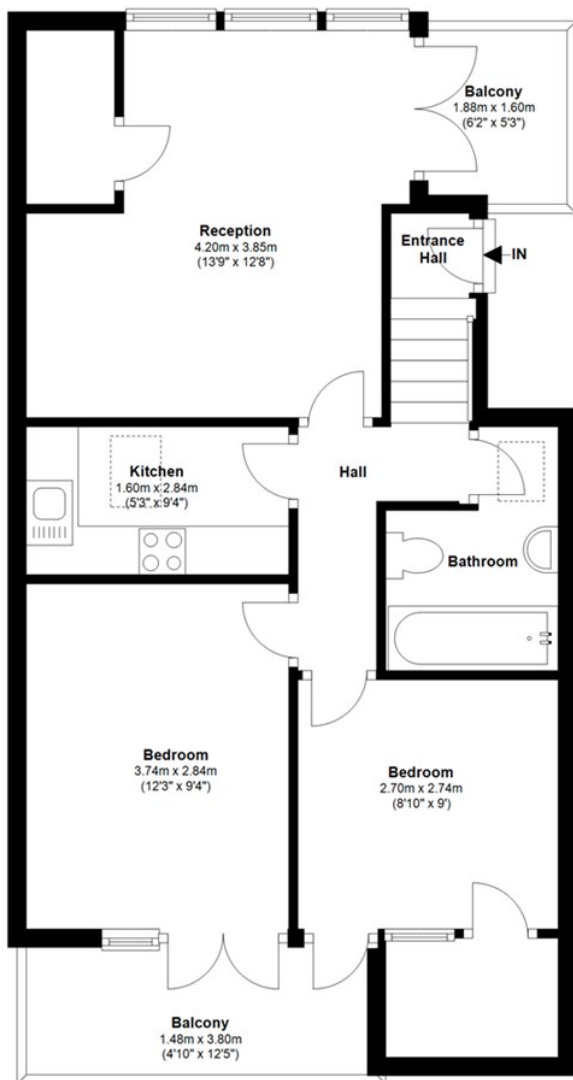
FEATURES:

- Front & Rear Terraces
- Top Floor Conversion
- Ideal for Finchley Road Tube
- Two bedrooms




Third Floor

Approx. 53.3 sq. metres (573.5 sq. feet)



Total area: approx. 53.3 sq. metres (573.5 sq. feet)

Energy Efficiency Rating

	Current	Potential
Very energy efficient - lower running costs		
(92 plus) A		
(81-91) B		
(69-80) C		
(55-68) D	64	68
(39-54) E		
(21-38) F		
(1-20) G		
Not energy efficient - higher running costs		
England & Wales	EU Directive 2002/91/EC	

IMPORTANT NOTICE

Whilst every attempt has been made to ensure the accuracy of these details and floor plans contained here, measurements of doors, windows and rooms are approximate and no responsibility is taken for any error, omission or misstatement. These plans and details are for representation only as defined by RICS code of measuring practice and should be used as such by any prospective tenant. Not to scale. Copyright: RHW Estates

