



112 FINCHLEY ROAD
LONDON NW3 5HT
INFO@RHWESTATES.CO.UK
020 7431 7121

WWW.RHWESTATES.CO.UK



FAIRHAZEL GARDENS
SOUTH HAMPSTEAD
LONDON
NW6 3SJ

PRICE: £2,000 Per Month

FURNISHED/UNFURNISHED

VIDEO TOUR

A recently refurbished 2 bedroom apartment over the entire second floor of this Victorian residence.

The apartment benefits from a reception room with a fitted open plan kitchen, tiled bathroom/WC & two double bedrooms.

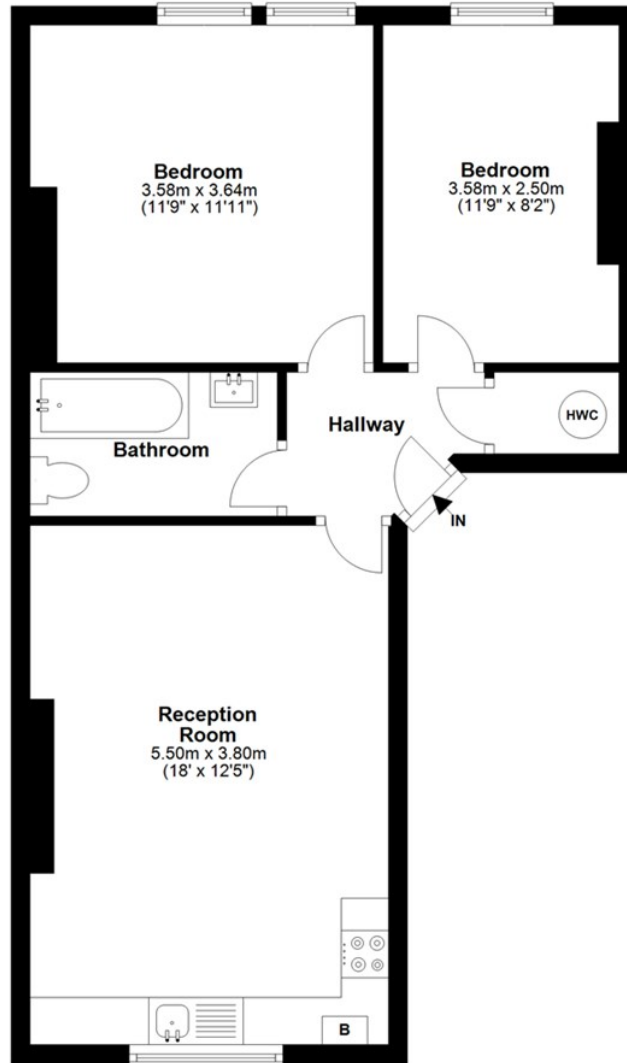
Located in the heart of South Hampstead close to Finchley Road tube station.

Property now furnished




FEATURES:

Second Floor



Total area: approx. 52.3 sq. metres (562.9 sq. feet)

| Energy Efficiency Rating | | |
|---|-------------------------|---|
| | Current | Potential |
| Very energy efficient - lower running costs | | |
| (92 plus) A | | |
| (81-91) B | | |
| (69-80) C | | |
| (55-68) D | | |
| (39-54) E | | |
| (21-38) F | | |
| (1-20) G | | |
| Not energy efficient - higher running costs | | |
| England & Wales | EU Directive 2002/91/EC |  |

IMPORTANT NOTICE

Whilst every attempt has been made to ensure the accuracy of these details and floor plans contained here, measurements of doors, windows and rooms are approximate and no responsibility is taken for any error, omission or misstatement. These plans and details are for representation only as defined by RICS code of measuring practice and should be used as such by any prospective tenant. Not to scale. Copyright: RHW Estates

