



112 FINCHLEY ROAD
LONDON NW3 5HT
INFO@RHWESTATES.CO.UK
020 7431 7121

WWW.RHWESTATES.CO.UK



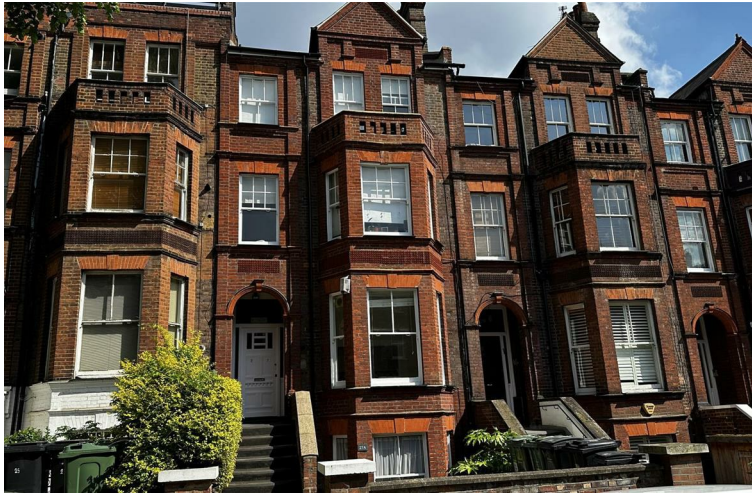
GOLDHURST TERRACE
SOUTH HAMPSTEAD
LONDON
NW6 3HB

A newly decorated 2 bedroom flat located within a 2-minute walk of Finchley Road Tube station and shop facilities.

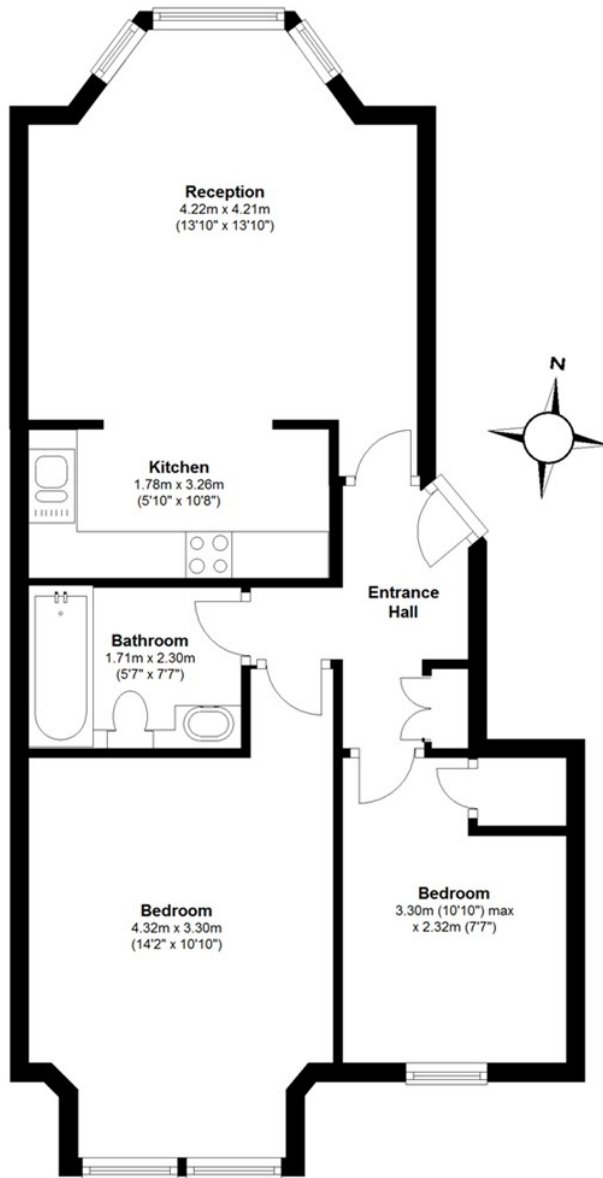
The flat has two double bedrooms, a fully fitted kitchen and an attractive reception with bay window.

PRICE: £2,250 PCM


FURNISHED



- FEATURES:**
- Prime Location
 - 2 Mins to shops and tube station
 - Modern
 - High ceilings
 - Furnished



Raised Ground Floor
Approx. 50.0 sq. metres (537.7 sq. feet)
Total area: approx. 50.0 sq. metres (537.7 sq. feet)

Energy Efficiency Rating		
	Current	Potential
Very energy efficient - lower running costs		
(92 plus) A		
(81-91) B		
(69-80) C		
(55-68) D		
(39-54) E		
(21-38) F		
(1-20) G		
Not energy efficient - higher running costs		
England & Wales	EU Directive 2002/91/EC	

IMPORTANT NOTICE

Whilst every attempt has been made to ensure the accuracy of these details and floor plans contained here, measurements of doors, windows and rooms are approximate and no responsibility is taken for any error, omission or misstatement. These plans and details are for representation only as defined by RICS code of measuring practice and should be used as such by any prospective tenant. Not to scale. Copyright: RHW Estates

