



112 FINCHLEY ROAD
LONDON NW3 5HT
INFO@RHWESTATES.CO.UK
020 7431 7121

WWW.RHWESTATES.CO.UK



DINERMAN COURT
BOUNDARY ROAD
LONDON
NW8 0HQ

LEASEHOLD
BY AUCTION £445,000
SUBJECT TO CONTRACT

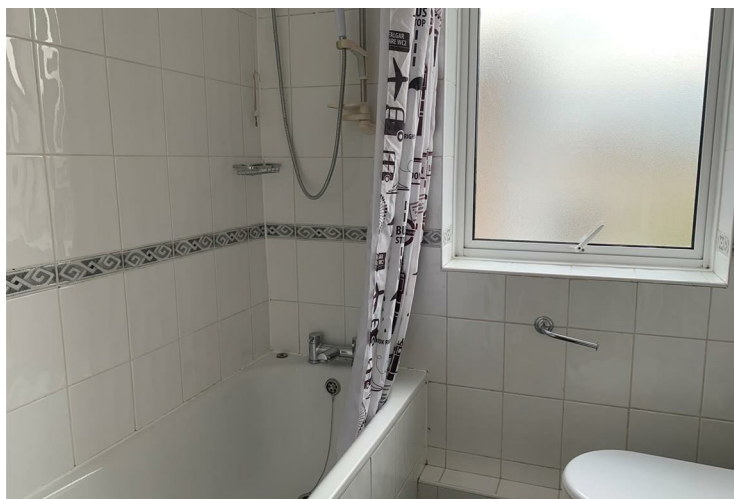
Being Sold via Secure Sale. Terms & Conditions apply. Starting Offers £445,000

OPEN HOUSE VIEWING 7TH MAY BETWEEN
3.00PM AND 4.00PM

This recently decorated two-bedroom flat is located between Swiss Cottage and St Johns Wood, with easy access to both tube stations and shopping facilities.

The flat is on the third floor of a well-maintained private purpose-built block. It benefits from laminate flooring, 2 double bedrooms, a fully fitted separate kitchen, a passenger lift and communal gardens.

This property will be legally prepared enabling any interested buyer to secure the property immediately once their bid/offer has been accepted. Ultimately a transparent process which provides speed, security and certainty for all parties.



FEATURES

VIDEO TOUR:

SERVICE CHARGE: £

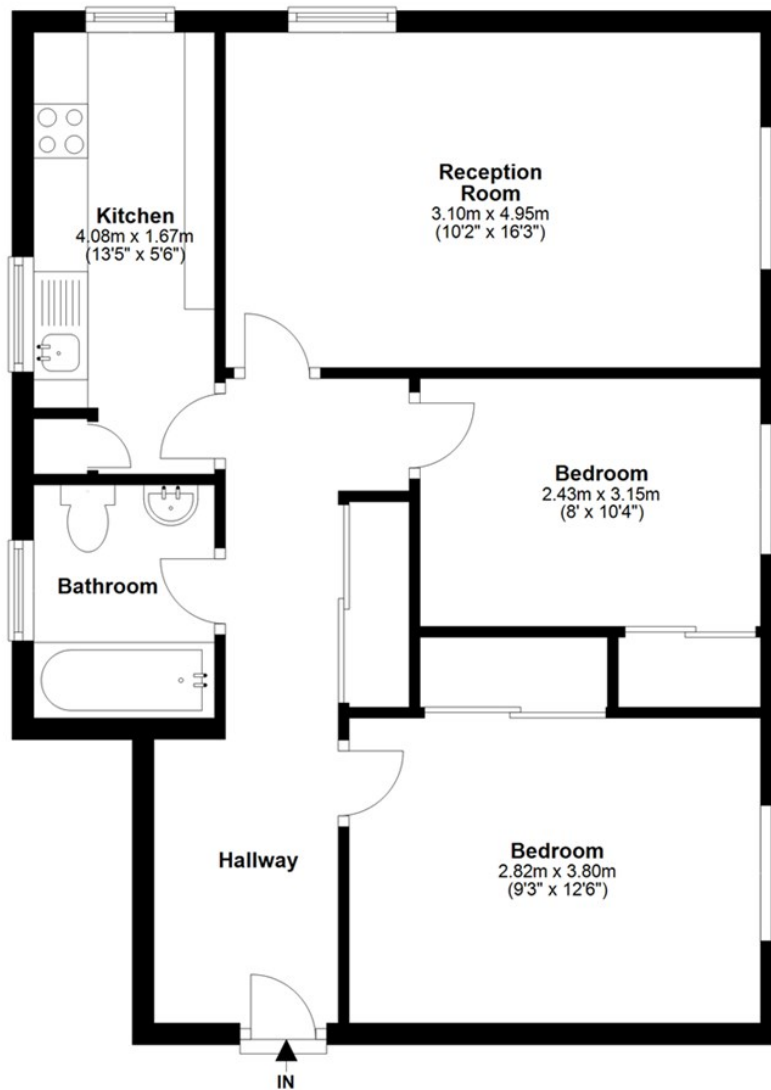
TENURE: Leasehold

COUNCIL TAX: C

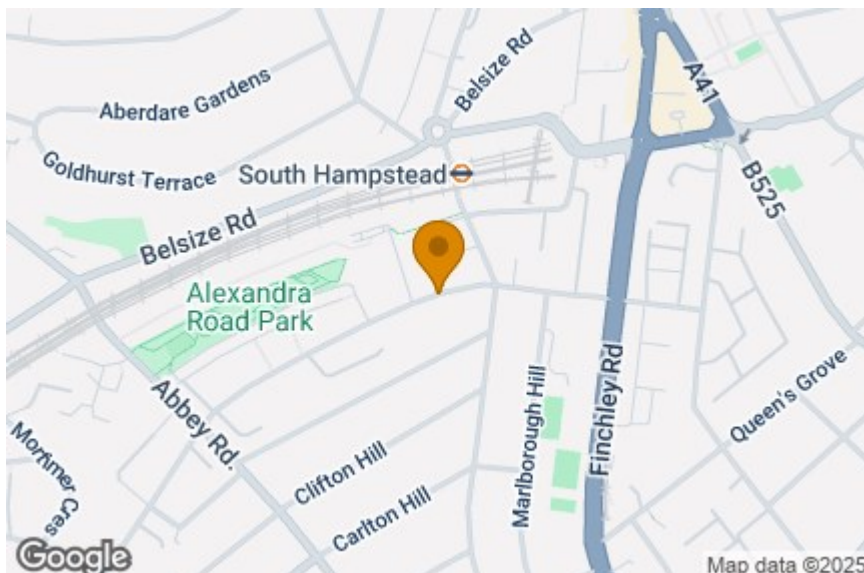


Fourth Floor

Approx. 58.4 sq. metres (628.7 sq. feet)



Total area: approx. 58.4 sq. metres (628.7 sq. feet)



Energy Efficiency Rating		
	Current	Potential
Very energy efficient - lower running costs		
(92 plus) A		
(81-91) B		
(69-80) C		
(55-68) D		
(39-54) E		
(21-38) F		
(1-20) G		
Not energy efficient - higher running costs		
England & Wales	EU Directive 2002/91/EC	



IMPORTANT NOTICE

Whilst every attempt has been made to ensure the accuracy of these details and floor plans contained here, measurements of doors, windows and rooms are approximate and no responsibility is taken for any error, omission or mis-statement. These plans and details are for representation only as defined by RICS code of measuring practice and should be used as such by any prospective purchaser.

Not to scale. Copyright: RHW Estates