



112 FINCHLEY ROAD  
LONDON NW3 5HT  
INFO@RHWESTATES.CO.UK  
020 7431 7121

WWW.RHWESTATES.CO.UK



CRUSADER HOUSE  
PALL MALL  
LONDON  
SW1Y 5LU

**PCM** £3,000 PCM  
SUBJECT TO CONTRACT

A beautiful apartment within a Grade II Listed building in the heart of St. James's. Situated on the second floor with a lift of this desirable period building on Pall Mall, this apartment is offered in great condition throughout and comprises a large imposing reception room, a separate fitted kitchen, a large bedroom with ample storage and a bathroom/WC: communal heating and independent hot water.

Pall Mall is a prestigious street in the St James's area of the City of Westminster, central London. Renowned for its historical and cultural significance, Pall Mall is synonymous with London's aristocratic and elite heritage.

Available immediately on a furnished basis



## FEATURES

VIDEO TOUR:

---

SERVICE CHARGE: £

---

TENURE:

---

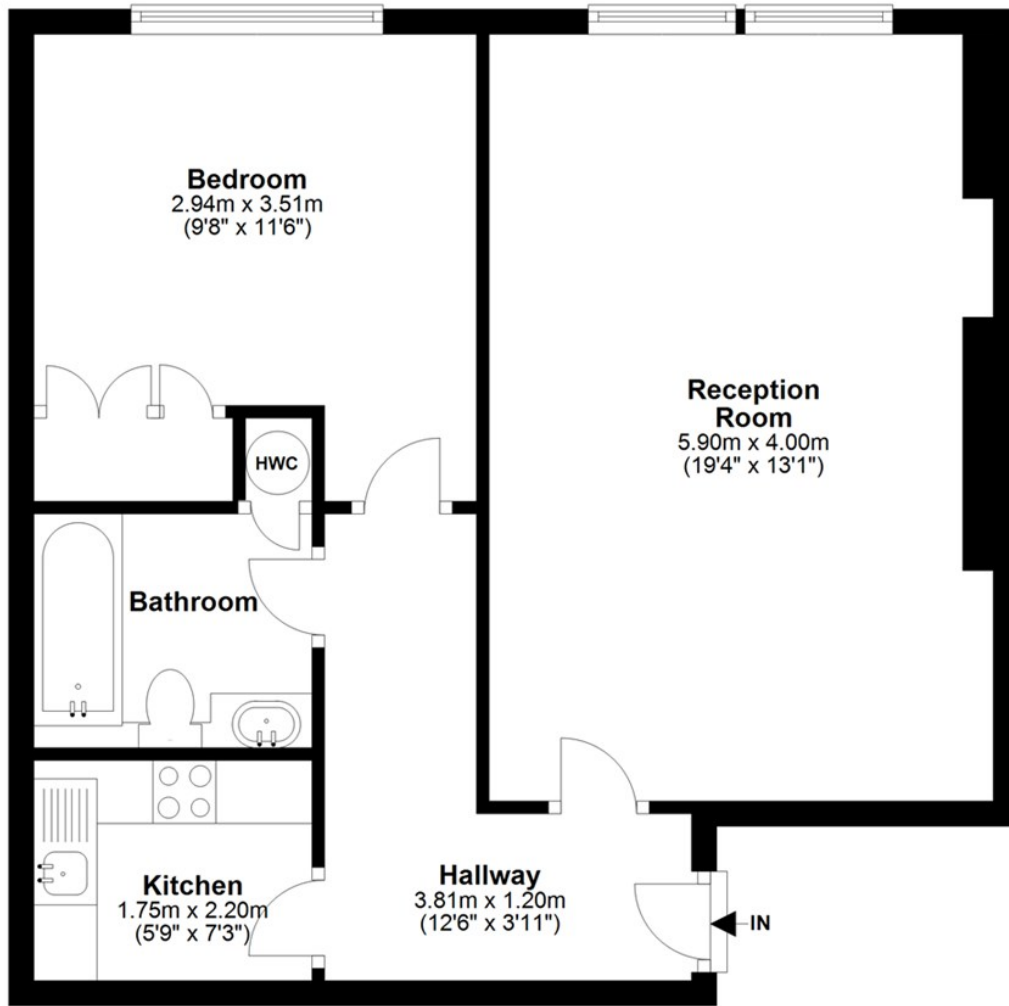
COUNCIL TAX: G

---



## Second Floor

Approx. 52.9 sq. metres (569.7 sq. feet)



Total area: approx. 52.9 sq. metres (569.7 sq. feet)



Energy Efficiency Rating		Current	Potential
Very energy efficient - lower running costs			
(92 plus) A			
(81-91) B			
(69-80) C			
(55-68) D		56	69
(39-54) E			
(21-38) F			
(1-20) G			
Not energy efficient - higher running costs			
England & Wales		EU Directive 2002/91/EC	



### IMPORTANT NOTICE

Whilst every attempt has been made to ensure the accuracy of these details and floor plans contained here, measurements of doors, windows and rooms are approximate and no responsibility is taken for any error, omission or mis-statement. These plans and details are for representation only as defined by RICS code of measuring practice and should be used as such by any prospective purchaser.

Not to scale. Copyright: RHW Estates