



WOODCHURCH ROAD
SOUTH HAMPSTEAD
LONDON
NW6 3PN

PRICE: £1,550 PCM

FURNISHED

We are pleased to offer this stunning recently refurbished spacious studio located in the heart of South Hampstead.

Positioned on the 1st floor of this well maintained Victorian house conversion. The apartment has been finished to very high standard benefiting from a spacious main studio room, modern fully fitted kitchen and 3 piece luxurious bathroom suite.

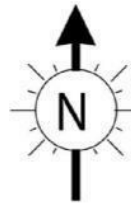
The flat also has the added benefit of a very large private decked roof terrace.

Single occupier only.

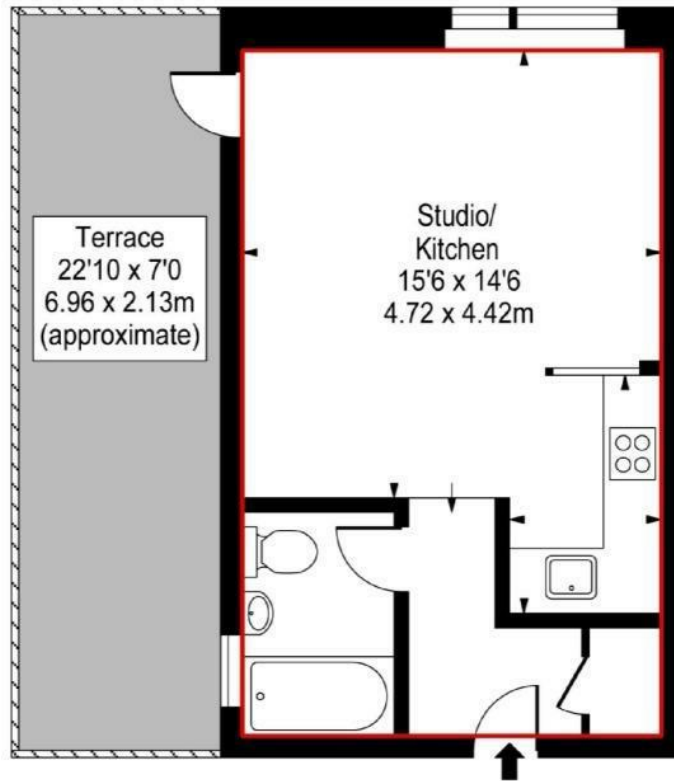


FEATURES:

- Spacious Studio
- Roof Terrace
- Modern
- Furnished
- Near West Hampstead Tube Station



Woodchurch Road, South Hampstead NW6



Terrace
22'10 x 7'0
6.96 x 2.13m
(approximate)

Studio/
Kitchen
15'6 x 14'6
4.72 x 4.42m

First Floor

Approximate Square Footage Within Red Line 349 Sq Ft - 32.42 Sq M

For Illustration Purposes Only - Not To Scale Floor Plan by www.nogaphotostudio.com Ref: No.10507

This floor plan should be used as a general outline for guidance only. Any intending purchaser or lessee should satisfy themselves by inspection, searches, enquiries and full survey as to the correctness of each statement. Any areas, measurements or distances quoted are approximate and should not be used to value a property or be the basis of any sale or let.

Energy Efficiency Rating		
	Current	Potential
Very energy efficient - lower running costs		
(92 plus) A		
(81-91) B		
(69-80) C		
(55-68) D		
(39-54) E		
(21-38) F		
(1-20) G		
Not energy efficient - higher running costs		
	56	78
England & Wales	EU Directive 2002/91/EC	

IMPORTANT NOTICE

Whilst every attempt has been made to ensure the accuracy of these details and floor plans contained here, measurements of doors, windows and rooms are approximate and no responsibility is taken for any error, omission or mis-statement. These plans and details are for representation only as defined by RICS code of measuring practice and should be used as such by any prospective tenant. Not to scale. Copyright: RHW Estates

