



FAIRHAZEL GARDENS  
SOUTH HAMPSTEAD  
LONDON  
NW6 3SJ

**PRICE: £2,250 PCM**

FURNISHED

A superb top floor two bedroom apartment is situated in this Victorian residence on Fairhazel Gardens in the heart of South Hampstead.

The property benefits from a spacious reception room, separate fitted kitchen, 2 x double bedrooms & bathroom. (stairs to unofficial roof access)

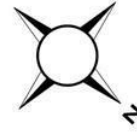
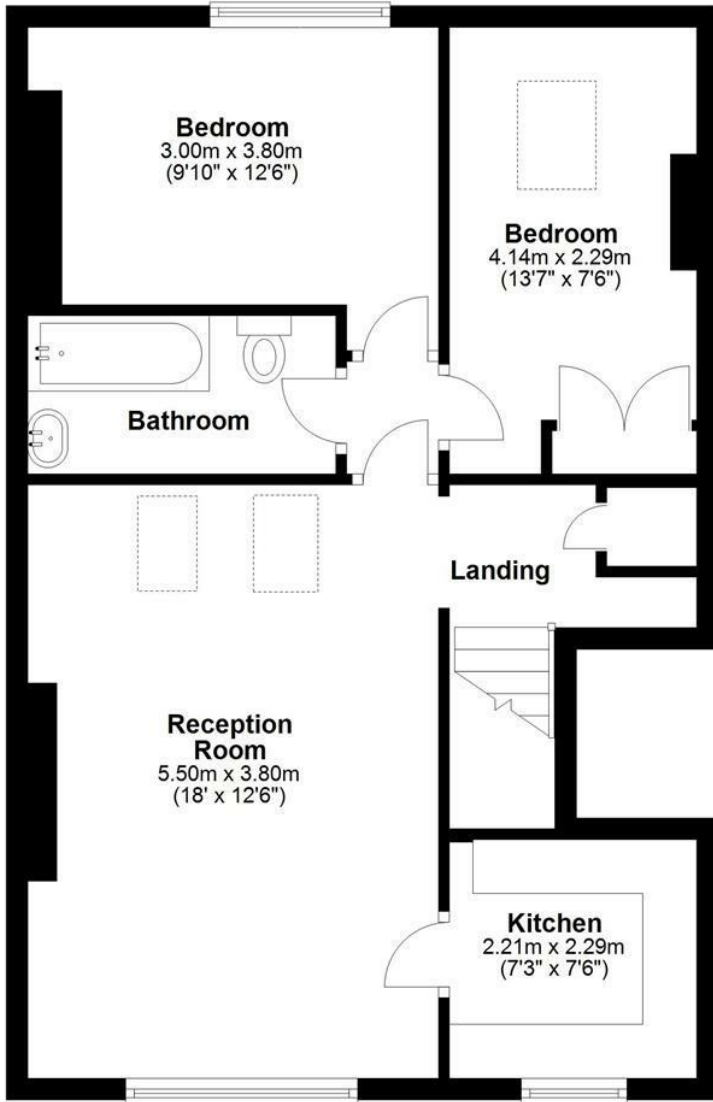
The property is offered in good decorative order with wooden-effect laminate flooring. The flat is ideally located for Finchley Road underground station and local shops and amenities.

More photo to be added shortly

FEATURES:

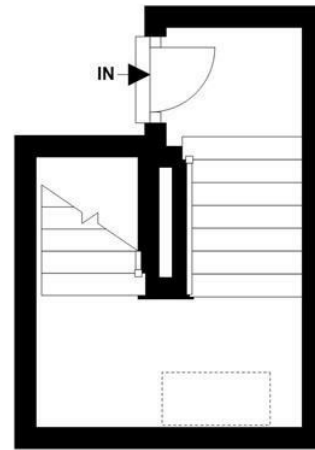
### Third Floor

Approx. 57.7 sq. metres (621.3 sq. feet)

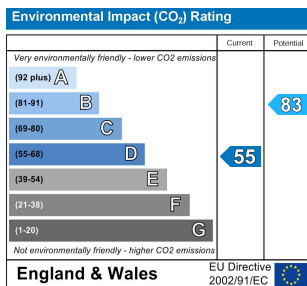
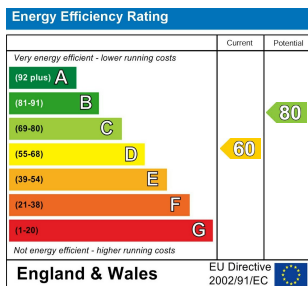


### Second Floor

Approx. 7.0 sq. metres (75.0 sq. feet)



Total area: approx. 64.7 sq. metres (696.3 sq. feet)



#### IMPORTANT NOTICE

Whilst every attempt has been made to ensure the accuracy of these details and floor plans contained here, measurements of doors, windows and rooms are approximate and no responsibility is taken for any error, omission or mis-statement. These plans and details are for representation only as defined by RICS code of measuring practice and should be used as such by any prospective purchaser.

Not to scale. Copyright: RHW Estates