



GOLDHURST MANSIONS
GOLDHURST TERRACE
SWISS COTTAGE
NW6 3HY

PRICE: £4,311 PCM

UNFURNISHED

We are pleased to offer this enormous four-bedroom mansion apartment which was recently refurbished.

Set within a well maintained Victorian Mansion block with passenger lift and Communal Garden the flat is on the 4th floor, entered via a large hallway and all rooms are spacious with high ceilings, 4 bedrooms' a luxury bathroom and en suite shower room, and guest WC. Large reception room a luxurious modern kitchen.

Located within a 1-minute walk to Finchley Road tube station and shopping facilities. A very large rarely available four bedroomed apartment in the heart of the much sought-after South Hampstead.

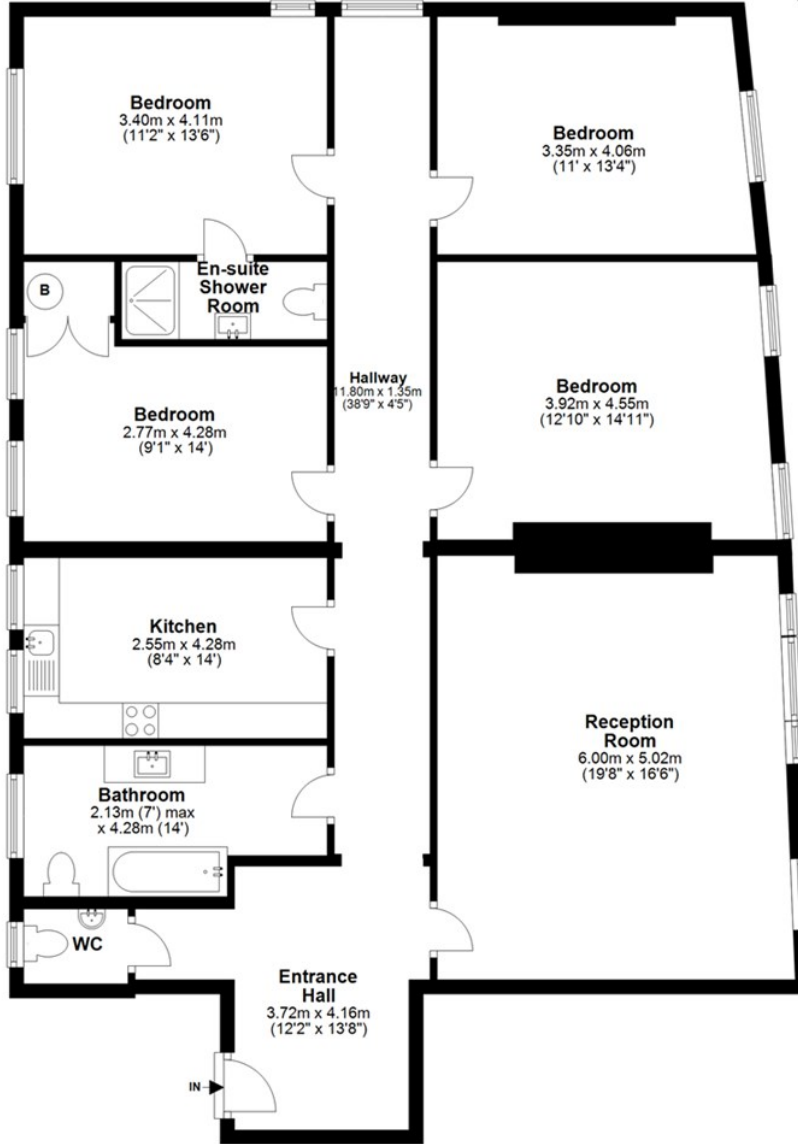
Must be seen

No sharers



FEATURES:

Fourth Floor
Approx. 147.2 sq. metres (1584.7 sq. feet)



Total area: approx. 147.2 sq. metres (1584.7 sq. feet)

Energy Efficiency Rating		Current	Potential
Very energy efficient - lower running costs			
(92 plus) A			
(81-91) B			
(69-80) C			
(55-68) D			
(39-54) E			
(21-38) F			
(1-20) G			
Not energy efficient - higher running costs			
England & Wales		66	82
	EU Directive 2002/91/EC		

Environmental Impact (CO ₂) Rating		Current	Potential
Very environmentally friendly - lower CO ₂ emissions			
(92 plus) A			
(81-91) B			
(69-80) C			
(55-68) D			
(39-54) E			
(21-38) F			
(1-20) G			
Not environmentally friendly - higher CO ₂ emissions			
England & Wales		59	81
	EU Directive 2002/91/EC		



IMPORTANT NOTICE

Whilst every attempt has been made to ensure the accuracy of these details and floor plans contained here, measurements of doors, windows and rooms are approximate and no responsibility is taken for any error, omission or mis-statement. These plans and details are for representation only as defined by RICS code of measuring practice and should be used as such by any prospective tenant. Not to scale. Copyright: RHW Estates