

112 FINCHLEY ROAD
LONDON NW3 5HT
INFO@RHWESTATES.CO.UK
020 7431 7121

WWW.RHWESTATES.CO.UK



CLAREMONT HEIGHTS
PENTONVILLE ROAD
LONDON
N1 9PR

Very large 2 double bedroom 2 bathrooms (one en suite) on the second floor of this luxury development. Fully fitted kitchen, wood flooring, balcony and concierge. Within a few minutes' walk to Angel tube station and local amenities of Islington High Street. Additionally the flat comes with an off street parking space for one car.

PCM £2,500 PCM
SUBJECT TO CONTRACT



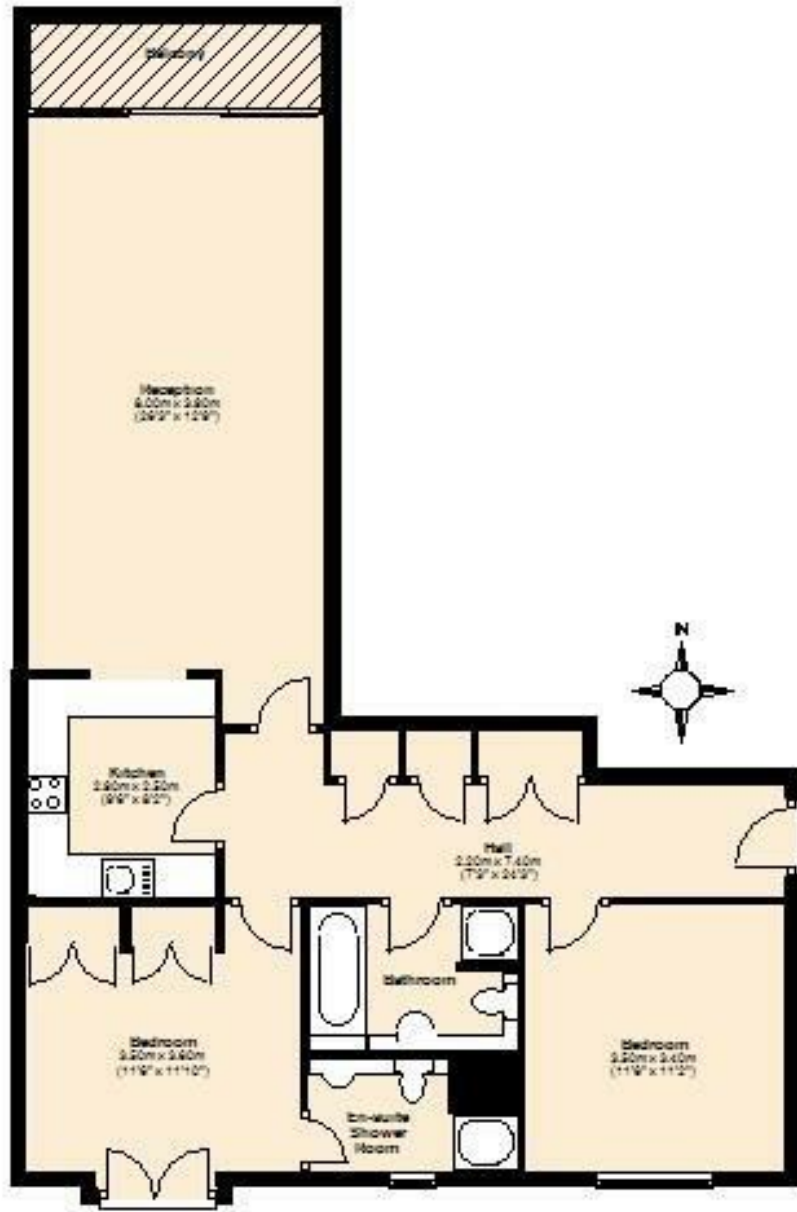
FEATURES

VIDEO TOUR:

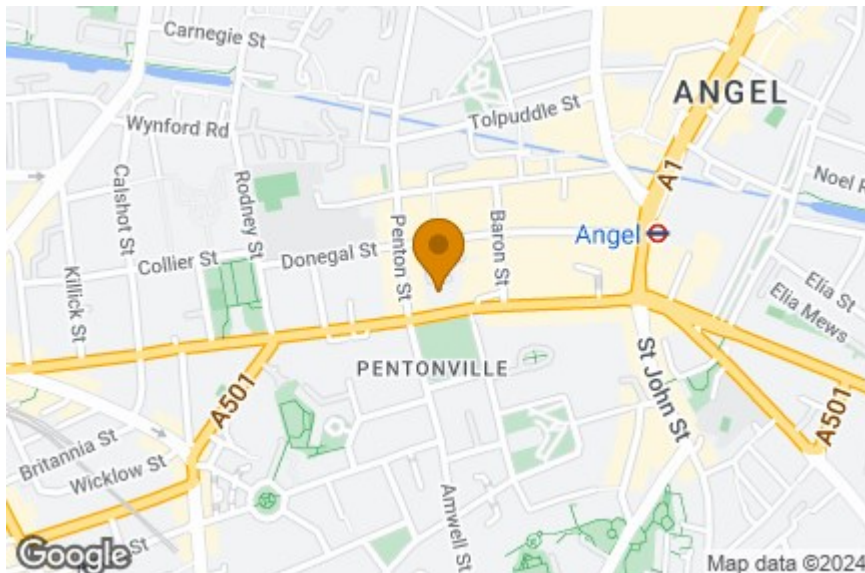
SERVICE CHARGE: £

TENURE:

COUNCIL TAX: F



First Floor Third Floor
approx. 66.7 sq. metres (722.0 sq. feet)



Energy Efficiency Rating		
	Current	Potential
Very energy efficient - lower running costs		
(92 plus) A		
(81-91) B		
(69-80) C		
(55-68) D		
(39-54) E		
(21-38) F		
(1-20) G		
Not energy efficient - higher running costs		
	71	77
England & Wales	EU Directive 2002/91/EC	



IMPORTANT NOTICE
 Whilst every attempt has been made to ensure the accuracy of these details and floor plans contained here, measurements of doors, windows and rooms are approximate and no responsibility is taken for any error, omission or mis-statement. These plans and details are for representation only as defined by RICS code of measuring practice and should be used as such by any prospective purchaser.
 Not to scale. Copyright: RHW Estates