



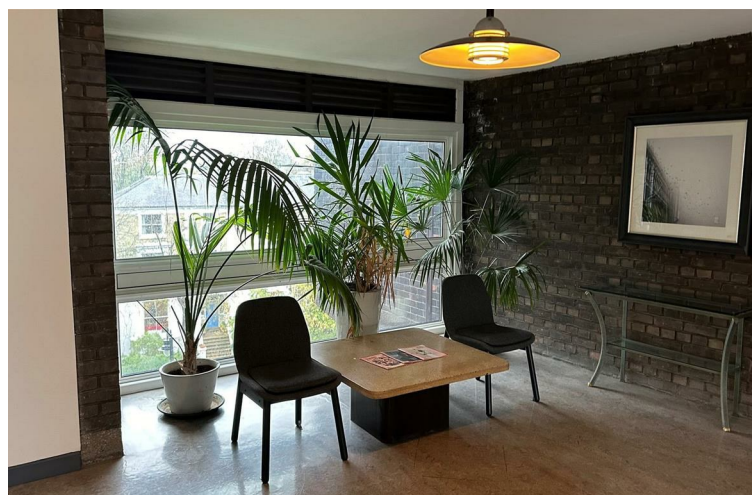
ELAINE COURT
HAVERSTOCK HILL
BELSIZE PARK
NW3 4RT

A one bedroom flat located in the heart of Belsize Park within a well maintained purpose built block situated less than a 3 mins walk to the local shopping amenities and tube station.

The property was recently refurbished and has been finished to a good standard and benefits from stunning communal gardens.

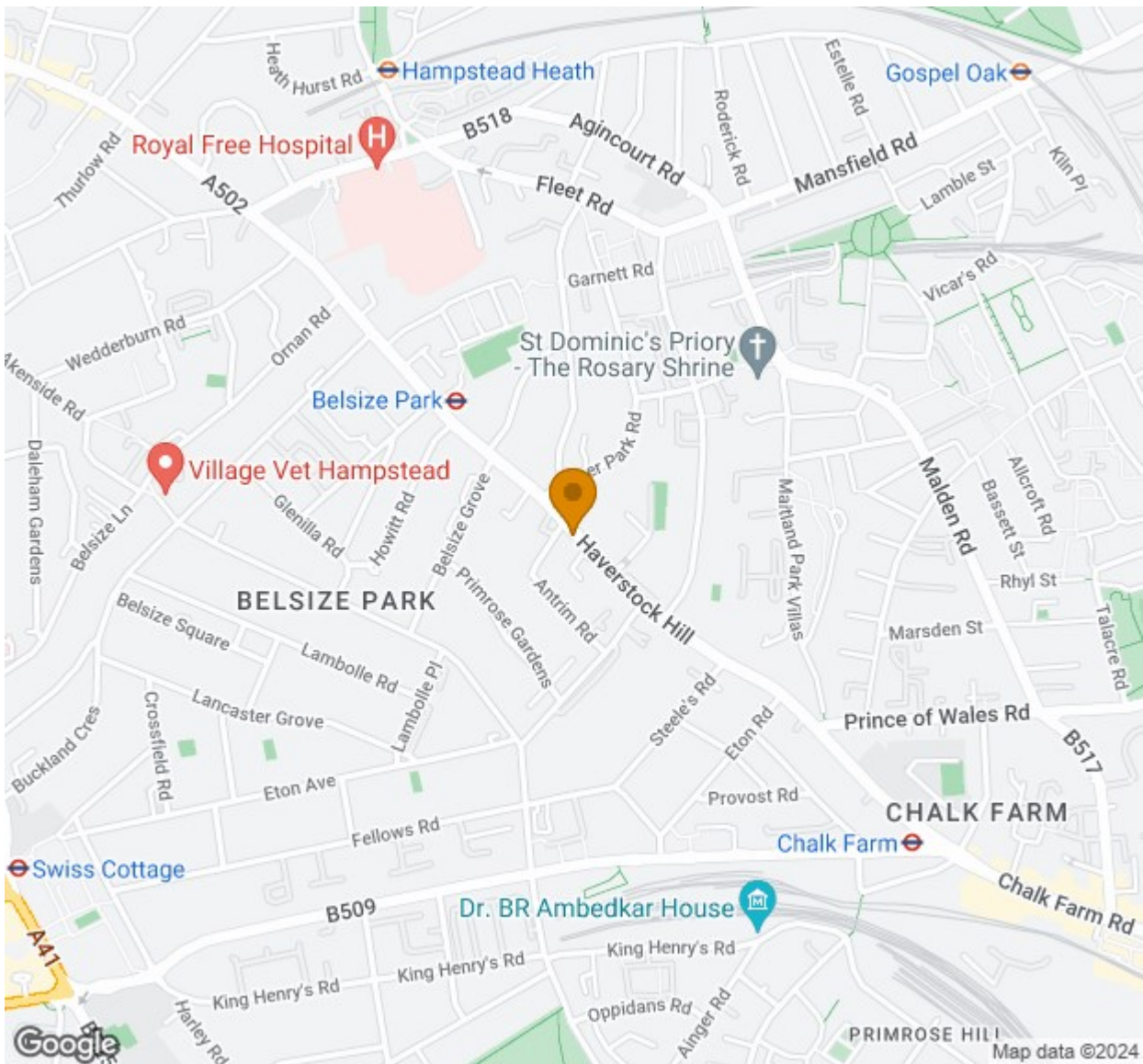
PRICE: £1,850 PCM

FURNISHED



FEATURES:

- Prime Location
- 3 minutes from Belsize Park tube station
- 4th Floor with a lift
- Communal gardens
- Furnished



Energy Efficiency Rating		Current	Potential
Very energy efficient - lower running costs			
(92 plus) A			
(81-91) B			
(69-80) C			
(55-68) D			
(39-54) E			
(21-38) F			
(1-20) G			
Not energy efficient - higher running costs			
England & Wales	EU Directive 2002/91/EC	73	84

Environmental Impact (CO ₂) Rating		Current	Potential
Very environmentally friendly - lower CO ₂ emissions			
(92 plus) A			
(81-91) B			
(69-80) C			
(55-68) D			
(39-54) E			
(21-38) F			
(1-20) G			
Not environmentally friendly - higher CO ₂ emissions			
England & Wales	EU Directive 2002/91/EC	71	82

IMPORTANT NOTICE

Whilst every attempt has been made to ensure the accuracy of these details and floor plans contained here, measurements of doors, windows and rooms are approximate and no responsibility is taken for any error, omission or mis-statement. These plans and details are for representation only as defined by RICS code of measuring practice and should be used as such by any prospective purchaser.

Not to scale. Copyright: RHW Estates