



FORDWYCH ROAD
WEST HAMPSTEAD
LONDON
NW2 3TL

PRICE: £1,750 PCM

FURNISHED/UNFURNISHED

We have pleasure in offering this super one-bedroom second-floor apartment within a semi-detached Victorian residence.

Ideally placed within a moment's walk of Kilburn tube and a short walk to West Hampstead.

Finished to an high standard with modern walnut wooden style flooring, a luxury granite topped fully fitted kitchen, fitted stylish bathroom/WC and double glazed windows, in addition there is a Separate utility storage cupboard.

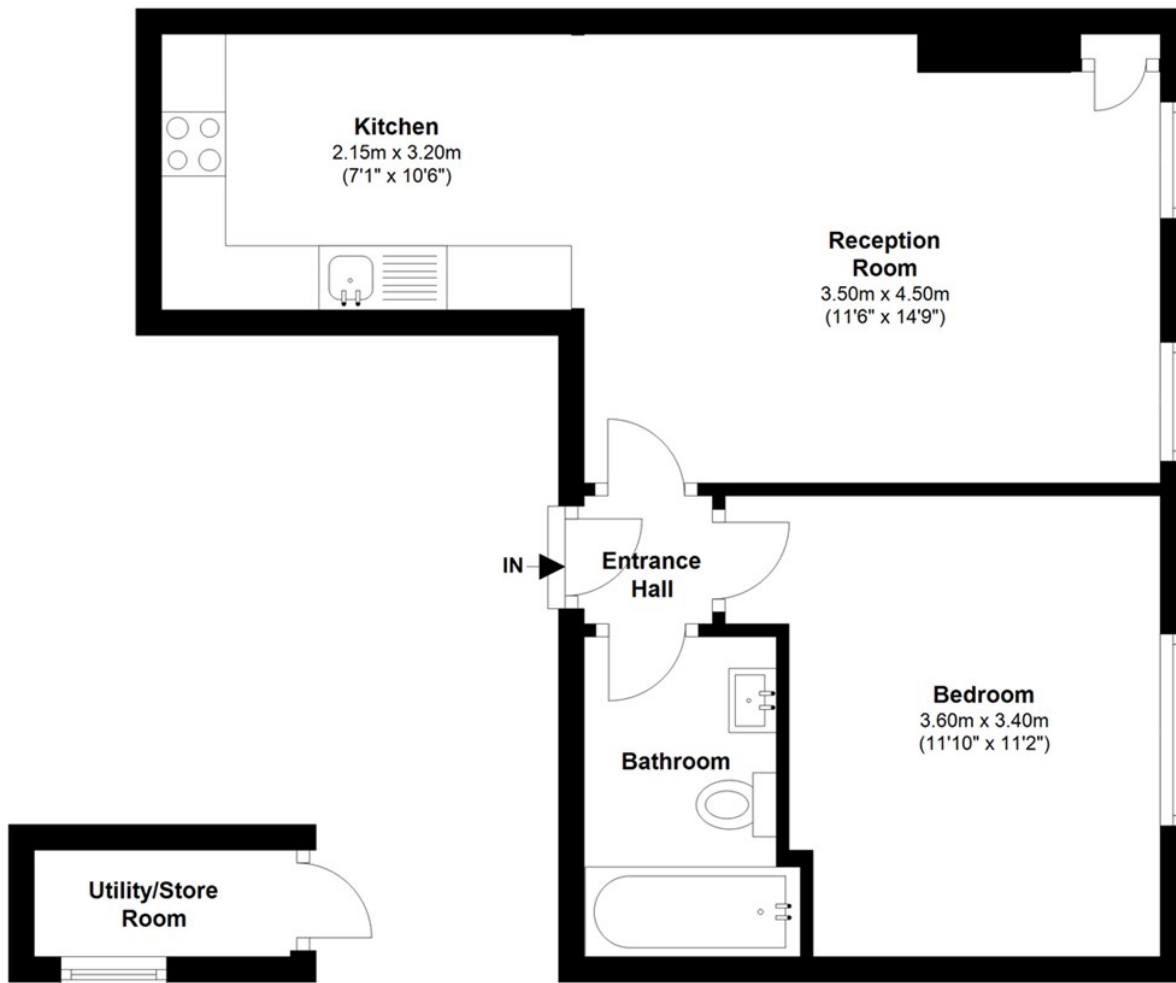
Available Furnished or Unfurnished



FEATURES:

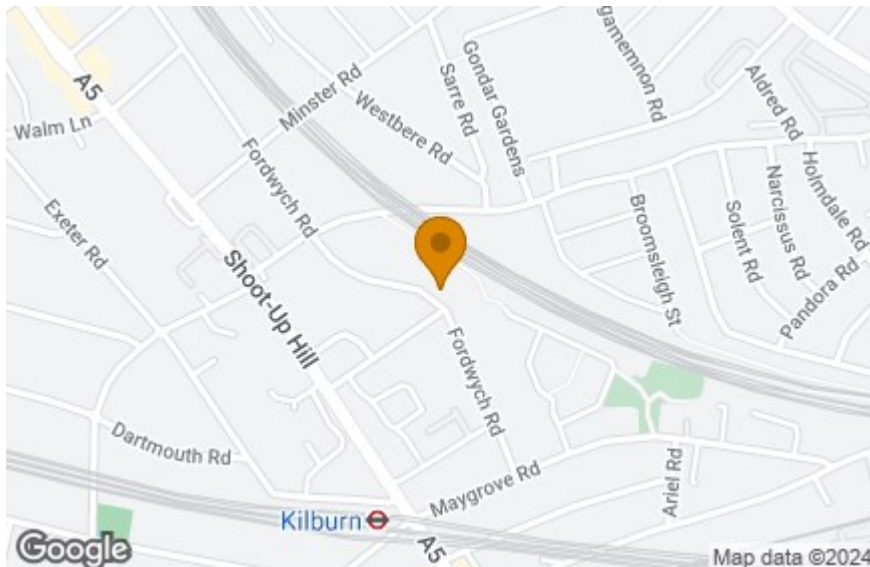
Second Floor

Approx. 39.5 sq. metres (424.7 sq. feet)



Total area: approx. 39.5 sq. metres (424.7 sq. feet)

Energy Efficiency Rating		Current	Potential
Very energy efficient - lower running costs			
(92 plus) A			
(81-91) B			
(69-80) C		74	81
(55-68) D			
(39-54) E			
(21-38) F			
(1-20) G			
Not energy efficient - higher running costs			
England & Wales	EU Directive 2002/91/EC		



IMPORTANT NOTICE

Whilst every attempt has been made to ensure the accuracy of these details and floor plans contained here, measurements of doors, windows and rooms are approximate and no responsibility is taken for any error, omission or mis-statement. These plans and details are for representation only as defined by RICS code of measuring practice and should be used as such by any prospective tenant. Not to scale. Copyright: RHW Estates