



112 FINCHLEY ROAD
LONDON NW3 5HT
INFO@RHWESTATES.CO.UK
020 7431 7121

WWW.RHWESTATES.CO.UK



ST. JOHNS COURT
FINCHLEY ROAD
LONDON
NW3 6LE

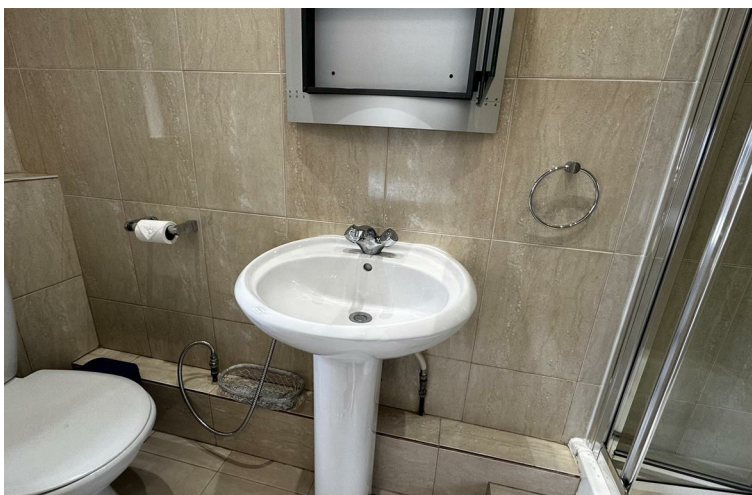
PRICE: £2,850 PCM

FURNISHED/UNFURNISHED

We are delighted to offer this stunning two-bedroom 4th floor Apartment within this very popular Art Deco purpose-built block adjacent to the Finchley Road Tube station.

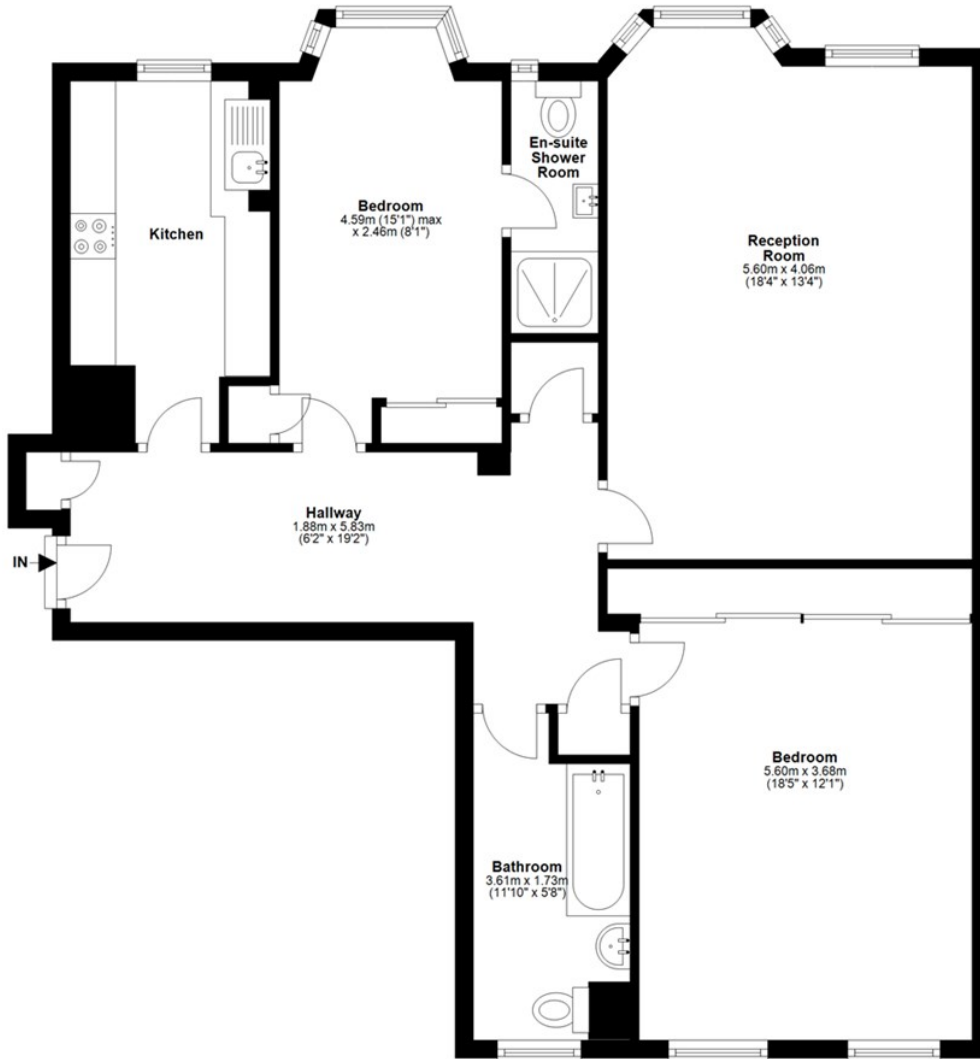
Offering approx 950 sq st of well-arranged accommodation in immaculate condition with modern fully fitted kitchen, luxury bathroom/WC and en suite shower room/WC. Spacious light-filled reception room two very large bedrooms.

The block enjoys a passenger and goods lift, daytime porter services with communal heating and hot water included in the rent.



FEATURES:

Fourth Floor
Approx. 88.1 sq. metres (948.7 sq. feet)



Total area: approx. 88.1 sq. metres (948.7 sq. feet)

Energy Efficiency Rating		Current	Potential
Very energy efficient - lower running costs			
(92 plus) A			
(81-91) B			
(69-80) C			
(55-68) D			
(39-54) E			
(21-38) F			
(1-20) G			
Not energy efficient - higher running costs			
England & Wales	EU Directive 2002/91/EC	75	83

IMPORTANT NOTICE

Whilst every attempt has been made to ensure the accuracy of these details and floor plans contained here, measurements of doors, windows and rooms are approximate and no responsibility is taken for any error, omission or mis-statement. These plans and details are for representation only as defined by RICS code of measuring practice and should be used as such by any prospective tenant. Not to scale. Copyright: RHW Estates

