

# Tudor

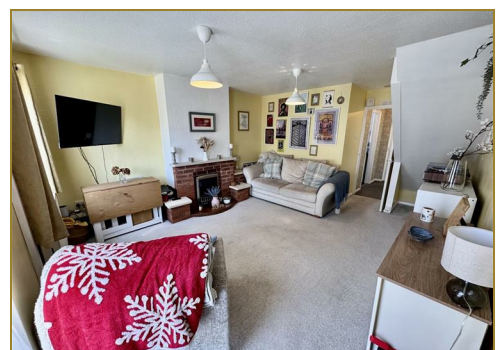
syrfewyr siartredig | gwerthwyr eiddo | rheolwyr meddiannau  
chartered surveyors | estate agents | property managers



**8 Stad Llwynnaethnen, Trefor, LL54 5LE**

**£169,000**

- Semi-Detached Residence
- Popular Residential Area
- Parking, Garage & Gardens
- Close to Amenities, School & Beach
- Two Bedrooms
- Gas LPG Central Heating



# 8 Stad Llwynnaethnen, Trefor, LL54 5LE

Tudor Estate Agents & Chartered Surveyors are favoured with instructions to offer for sale this semi-detached residence, situated in a convenient position in this rural village located on the north coast of the Llyn Peninsula. Surrounded by spectacular views towards Yr Eifl mountains. Trefor is a small village located on the north coast of the Llyn Peninsula which is within an easy commute to Caernarfon and Pwllheli areas with local public transport available from the village. This property is conveniently located within walking distance of the village amenities, primary school, beach and harbour. The accommodation briefly comprises of the following:- Porch. Hall. Kitchen. Lounge. Two Bedrooms. Shower Room. Garage/Utility. Parking. Gardens to front, side and rear.

## GROUND FLOOR

### Porch

Storage cupboard. Door to:

### Hall

Stairs to first floor. Radiator. Opening to:

### Kitchen 6'8 x 9'1 (2.03m x 2.77m)

Kitchen units incorporating stainless steel sink unit. Space for cooker. Combi boiler LPG for central heating and hot water.

### Lounge 13'0 x 13'11 (3.96m x 4.24m)

Outside door to front. Gas fire. Radiator.

## FIRST FLOOR

### Landing

Storage cupboard.

### Front Bedroom 12'11 x 8'5 (3.94m x 2.57m)

Radiator. Built in wardrobe.

### Shower Room 5'6 x 6'8 (1.68m x 2.03m)

Walk-in Shower. Vanity washbasin. Low level w.c. Radiator.

### Rear Bedroom 13'0 x 7'9 (3.96m x 2.36m)

Radiator. Built in wardrobe.

## OUTSIDE

Off-road parking for one vehicle. Gardens to front and side. Store shed.

### GARAGE 8'4 x 16'7 (2.54m x 5.05m)

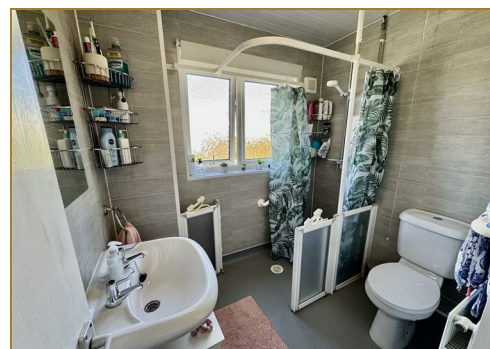
Service door. Plumbing for washing machine. Up and over door (not in use).

## SERVICES

We understand that mains water, electricity and drainage are connected to the property. LPG Gas. Prospective purchasers should make their own enquiries as to the suitability and adequacy of these services.

## TENURE

We understand that the property is freehold with vacant possession available on completion.



# Tudor

Plas Y Ward, Y Maes, Pwllheli, Gwynedd, LL53 5DA

T: 01758 701 100

E: [info@huwtudor.co.uk](mailto:info@huwtudor.co.uk)

[www.huwtudor.co.uk](http://www.huwtudor.co.uk)

## 8 Stad Llwynnaethnen, Trefor, LL54 5LE



# Tudor

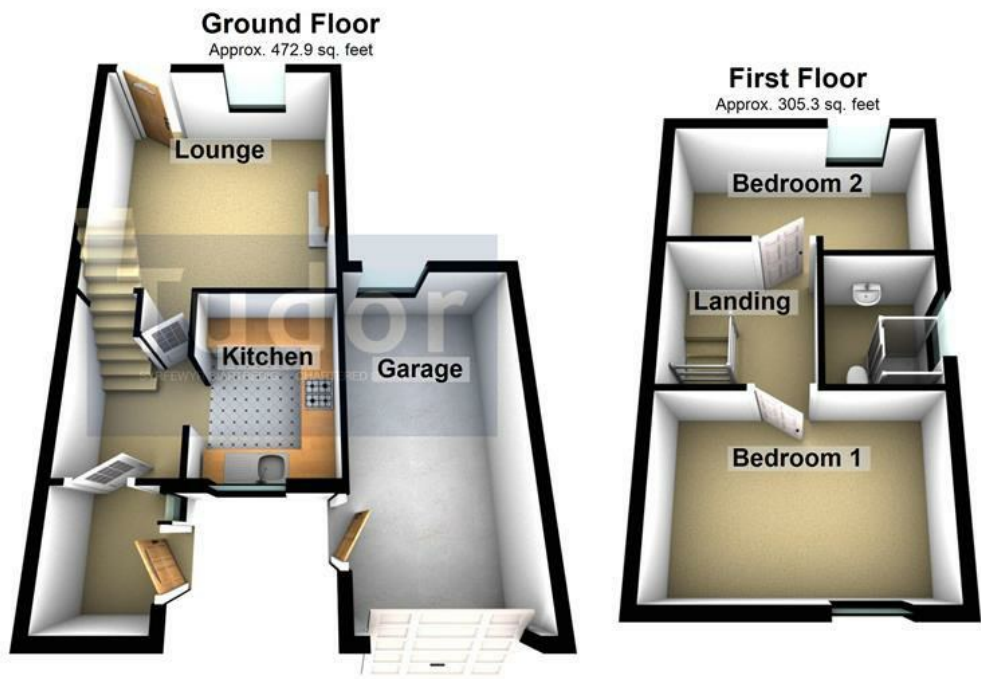
Plas Y Ward, Y Maes, Pwllheli, Gwynedd, LL53 5DA

T: 01758 701 100

E: [info@huwtudor.co.uk](mailto:info@huwtudor.co.uk)

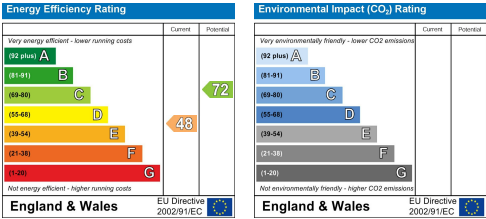
[www.huwtudor.co.uk](http://www.huwtudor.co.uk)

# 8 Stad Llwynnaethnen, Trefor, LL54 5LE



Total area: approx. 778.1 sq. feet

Copyright Tudor Chartered Surveyors & Estate Agents. For room identification only.  
Plan produced using PlanUp.



# Tudor

Plas Y Ward, Y Maes, Pwllheli, Gwynedd, LL53 5DA  
T: 01758 701 100  
E: [info@huwtudor.co.uk](mailto:info@huwtudor.co.uk)  
[www.huwtudor.co.uk](http://www.huwtudor.co.uk)