

# Tudor

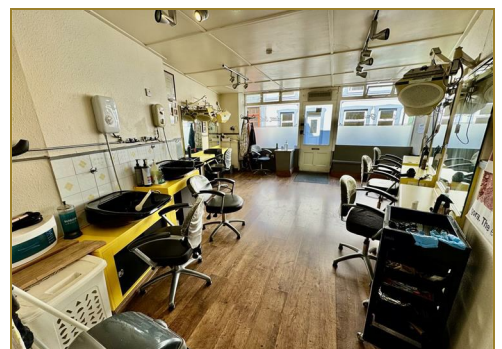
syrfewyr siartredig | gwerthwyr eiddo | rheolwyr meddiannau  
chartered surveyors | estate agents | property managers



## Siop Gwallt Karen, 4 Ala Uchaf, Pwllheli, LL53 5RE

**£69,995**

- Well-Established Hair Salon
- Town Centre Location
- Excellent Trading Position
- Long Leasehold
- Great Potential
- Potential for Many Uses





# Siop Gwallt Karen, 4 Ala Uchaf, Pwllheli, LL53 5RE

**\*COMMERCIAL UNIT\*** Tudor Estate Agents & Chartered Surveyors are favoured with instructions to offer this very reputable & well-established hair salon for sale by Long Leasehold. This is an excellent opportunity to acquire a well-known salon, Siop Gwallt Karen holds an excellent reputation and has been serving the Pwllheli community for over 36 years.

The shop is located in the heart of the town and offers a great potential for a variety of use, subject to planning consent.

The premises includes all fixtures and fittings and equipment.

EPC - 125E

Inspection Recommended

## GROUND FLOOR

### Salon

### Kitchen

Sink unit. Plumbing for washing machine. Outside door to rear.

### Toilet

## SERVICES

We understand that mains water, electricity and drainage are connected to the property. Prospective purchasers should make their own enquiries as to the suitability and adequacy of these services.

## TENURE

We understand that the property is sold with Vacant Possession and by long leasehold of 999 years since 1987. Peppercorn Ground Rent plus Service Charge. A copy of the lease is available on request.



# Tudor

Plas Y Ward, Y Maes, Pwllheli, Gwynedd, LL53 5DA

T: 01758 701 100

E: [info@huwtudor.co.uk](mailto:info@huwtudor.co.uk)

[www.huwtudor.co.uk](http://www.huwtudor.co.uk)



Total area: approx. 26.7 sq. metres (286.9 sq. feet)

Copyright Tudor Chartered Surveyors & Estate Agents. For  
room identification only.  
Plan produced using PlanUp.

