

Tudor

syrfewyr siartredig | gwerthwyr eiddo | rheolwyr meddiannau
chartered surveyors | estate agents | property managers



Flat 2 Ael Y Don Victoria Parade, Pwllheli, LL53 5AL

£650 Per calendar month

- Ground Floor Seafront Apartment
- Two Bedrooms
- Available Immediately
- Modern Accommodation
- Double Glazing & Gas Central Heating
- Deposit £700



Flat 2 Ael Y Don Victoria Parade, Pwllheli, LL53 5AL

This modern ground floor apartment is situated on the sea front enjoying spectacular views over the promenade, Cardigan Bay encompassing St Tudwals Islands and mountains of Mid Wales.

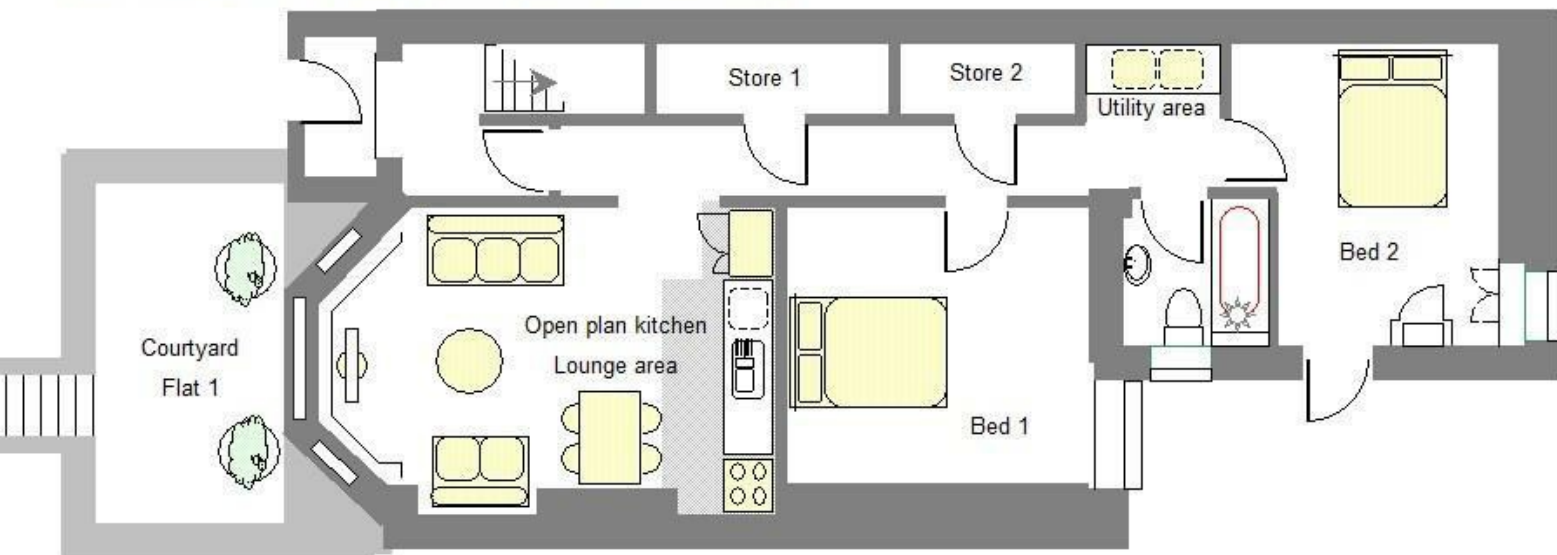
Pwllheli is a thriving market town and seaside resort situated on the south side of the glorious Llyn Peninsula and boasts excellent amenities including leisure centre, golf course and award winning marina.

The apartment provides comfortable modern living, has the benefit of double glazing and gas central heating and briefly comprises of the following: - Hall. Open plan lounge/kitchen/diner (modern kitchen offering space for American style fridge/freezer, oven and dishwasher) - spectacular views towards the beach. Two Double Bedrooms. Inner hall with Utility area. Storage Cupboard. Bathroom.

Deposit £700

Flat 2 Ael y Don South Beach Promenade Pwllheli

Indicative furniture and white goods layout (not included)



Tudor

Plas Y Ward, Y Maes, Pwllheli, Gwynedd, LL53 5DA

T: 01758 701 100

E: info@huwtudor.co.uk

www.huwtudor.co.uk