

1A, BARNES HIGH STREET
BARNES, SW13 9LB

£850 PER MONTH

Offices to rent in the centre of Barnes Village

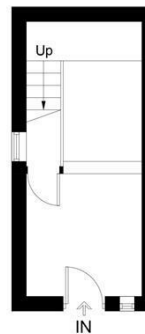
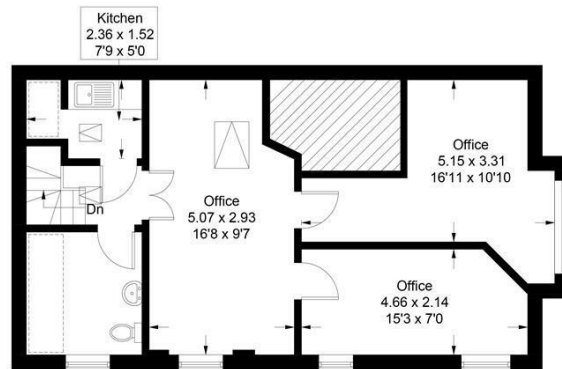
Two well presented offices on the first floor of this Iconic building in this central location which are both neutrally decorated and carpeted. A separate meeting room is available for use by agreement.

The kitchenette and wc are shared between the offices.

Available either furnished or unfurnished.

Barnes, London, SW13

Approximate Gross Internal Area = 71.7 sq m / 772 sq ft



First Floor
58.4 sq m / 629 sq ft

= Reduced headroom below 1.5m / 5'0

Ground Floor
13.3 sq m / 143 sq ft

All measurements are in accordance to the RICS Code Of Measuring Practice.
Measurements are approximate & only for illustrative purposes.
© Property Visual Ltd - info@propertyvisual.com - www.propertyvisual.com



Energy Efficiency Rating		
	Current	Potential
Very energy efficient - lower running costs		
(92 plus) A		
(81-91) B		
(69-80) C		
(55-68) D		
(39-54) E		
(21-38) F		
(1-20) G		
Not energy efficient - higher running costs		
England & Wales	EU Directive 2002/91/EC	

LAURENT

RESIDENTIAL

Barnes Sales
Essex Lodge
1A Barnes High Street
Barnes
London
SW13 9LB

0208 876 4466
property@laurentresidential.co.uk
www.laurentresidential.co.uk

Agents Note: Whilst every care has been taken to prepare these particulars, they are for guidance purposes only. All measurements are approximate and are for general guidance purposes only and whilst every care has been taken to ensure their accuracy, they should not be relied upon and potential buyers/tenants are advised to recheck the measurements