



Eversleigh Road, London,

Finchleys are pleased to offer this top floor 2 bed / 2 bath conversion located in the heart of West Finchley & Finchley Central with both tube stations within a 10 min walk away.

The property benefits from two good sized double bedrooms (main bedroom with en-suite), double glazing and gas central heating, further benefits include dishwasher, washing machine and separate dryer.

Perfect for two sharers or a small family.

**£1,750 Per
Calendar Month**

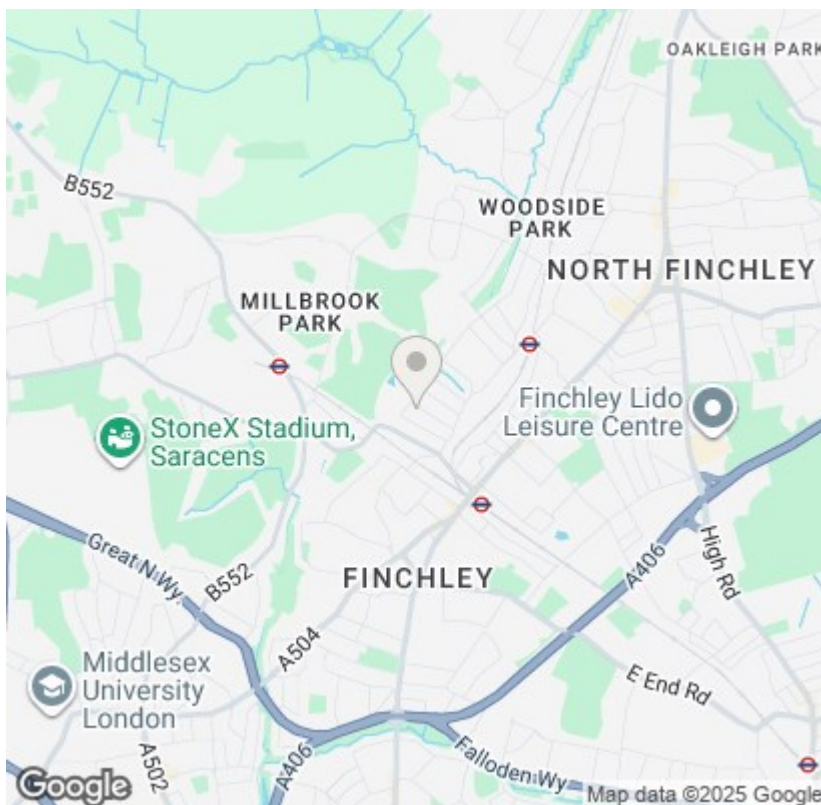
2  2  1  D 



**FINCHLEYS
ESTATES**
CLIENT FOCUSED. RESULTS DRIVEN.

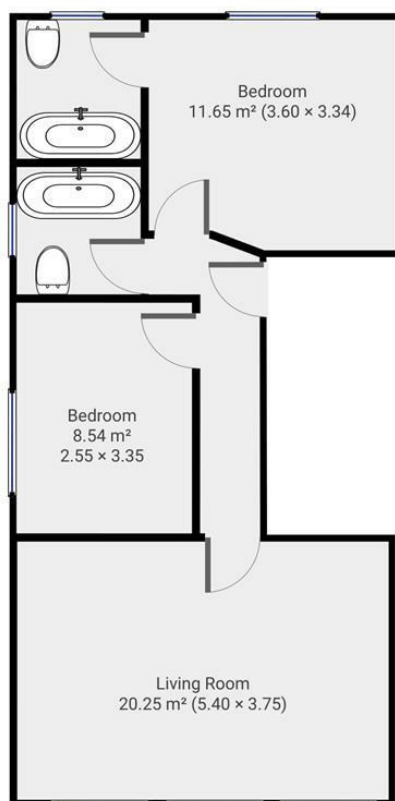


- 2 Bedrooms / 2 Bathrooms
 - Top Floor Conversion
- Close to West Finchley / Finchley Central Tube
- Fully Managed By Finchleys
 - Available Mid Oct 25



Eversleigh Road, N3

Total Area: 52.2 sq metres / 562 sq ft approx.



Please note: Whilst every attempt has been made to ensure the accuracy of our floor plans please note that measurements are approximate and no responsibility is taken for any error, omission or misstatement. The floor plans we produce are for representation purposes only and should be used as such by any prospective purchaser. No guarantee is given on the total square footage of the property if quoted on our plans. Any figure given is for initial guidance only and should not be relied on as a basis for valuation purposes.



11 STATION ROAD
FINCHLEY
LONDON
N3 2SB
02083461180