



Finchleys are proud to present this wonderful ground floor two bedroom two bathroom apartment.

Located in Finchley central this purpose built flat is located in prime location and benefits from modern interior and two bathroom (One Ensuite) a fitted kitchen and allocated parking.

Viewings highly recommended! Available immediately!

Connections House,
Glebe Road, London, N3

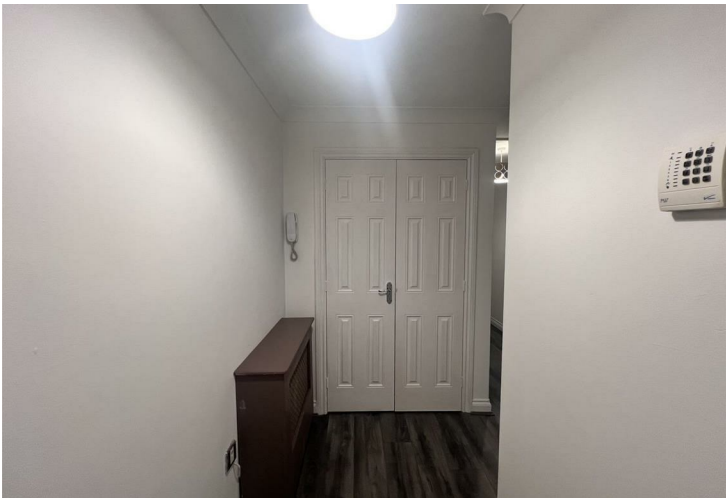
£1,900
Per Calendar
Month

2  2  1  

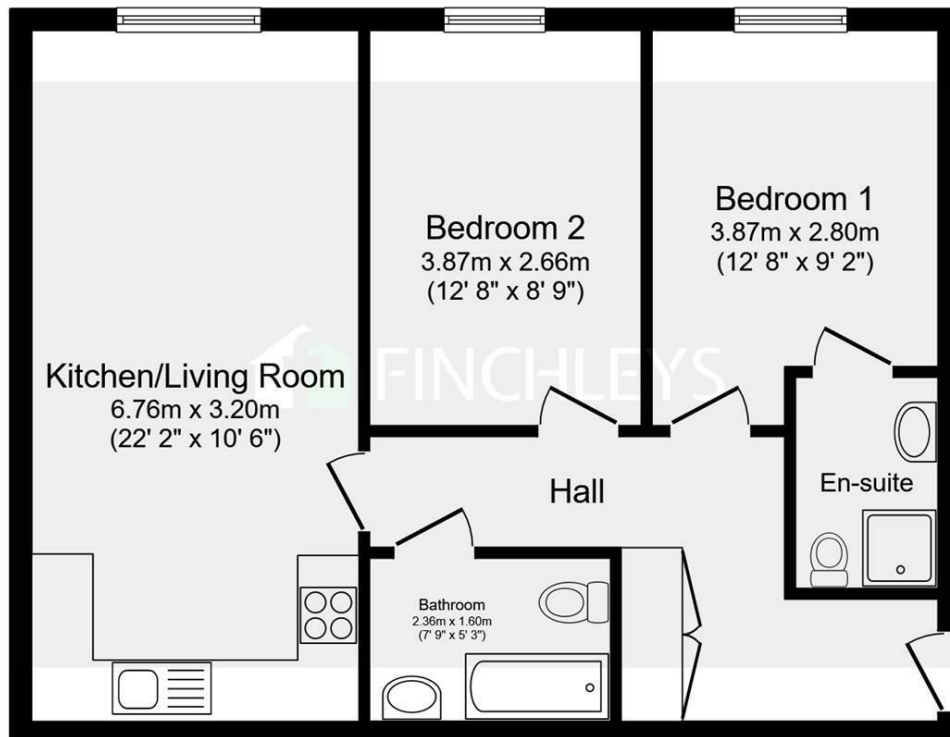
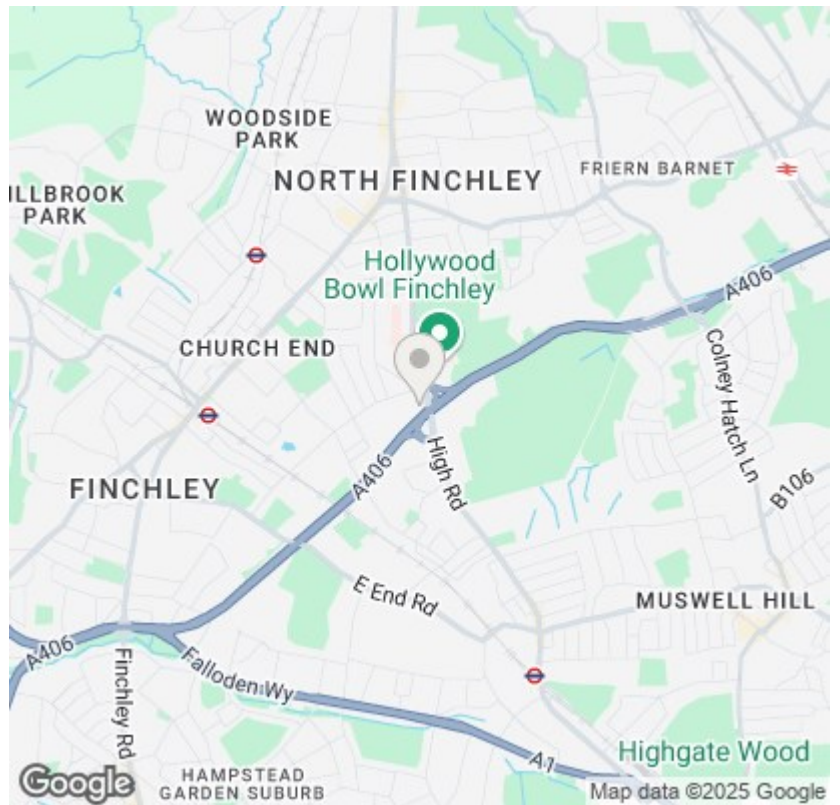


**FINCHLEYS
ESTATES**

CLIENT FOCUSED. RESULTS DRIVEN.



- 2 Bed / 2 Bath
- Allocated Off Street Parking
- Open Plan Kitchen / Lounge
 - Modern



Total floor area 59.9 m² (645 sq.ft.) approx

This floor plan is for illustrative purposes only. It is not drawn to scale. Any measurements, floor areas (including any total floor area), openings and orientation are approximate. No details are guaranteed, they cannot be relied upon for any purpose and they do not form part of any agreement. No liability is taken for any error, omission or misstatement. A party must rely upon its own inspection(s).
 Powered by www.focalagent.com



11 STATION ROAD
FINCHLEY
LONDON
N3 2SB
02083461180