



Etchingham Court Etchingham Park Road Finchley, N3

MUST BE VIEWED. This well apportioned one bedroom, top floor purpose built apartment situated in a small well-kept cul-de-sac location within walking distance of Victoria Park and Ballards Lane.

West Finchley and Finchley Central Tube Stations as well as numerous main bus routes are also within easy walking distance.

The property benefits from an 19'8 Ft reception, 9'11 Ft kitchen/breakfast room, double glazing & entryphone system

Offered on a Chain Free basis with the added benefit of Share Freehold.

OPEN HOUSE - Saturday, 17th May. Viewings by appointment only

£300,000
Share of Freehold
Offers Over

1  1  1  C 

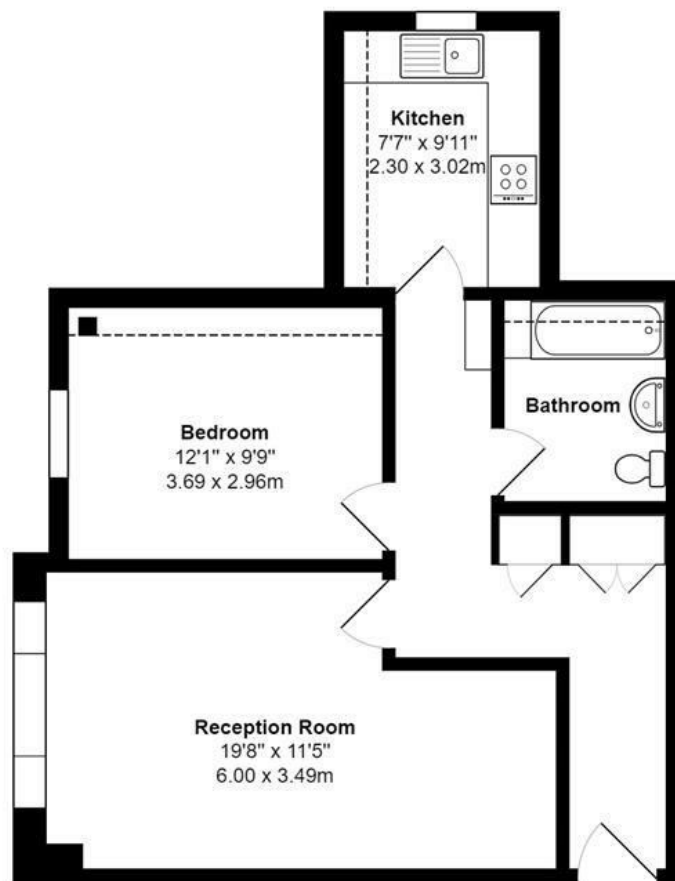
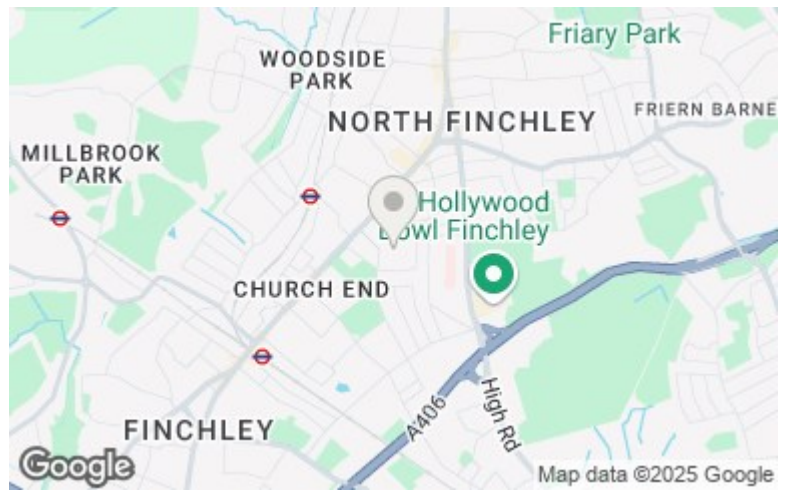


**FINCHLEYS
ESTATES**

CLIENT FOCUSED. RESULTS DRIVEN.



- LARGE ONE BEDROOM FLAT
 - FANTASTIC LOCATION
- CLOSE TO VICTORIA PARK
 - SECLUDED LOCATION
 - SHARE OF FREEHOLD
 - CHAIN FREE



Etchingam Court N3

Total Area: 592 ft² ... 55.0 m²

Floor plans are for identification and guideline purposes only, not to scale
Compliant RICS code of measuring practice



11 STATION ROAD
FINCHLEY
LONDON
N3 2SB
02083461180