



Welcome to Solomons Court, a charming apartment located in the heart of North Finchley, N12. This delightful property boasts a cosy reception room, perfect for relaxing or entertaining guests. With one bedroom and a well-appointed bathroom, this apartment offers a comfortable living space ideal for individuals or couples.

Situated in a secure gated modern development, Solomons Court provides peace of mind and a sense of exclusivity. The allocated parking space for one car ensures convenience for residents, making coming home a breeze.

Whether you are looking for your first home or considering an investment opportunity, this chain-free property is a fantastic choice. Its prime location in North Finchley offers easy access to local amenities, schools, and transport links, making it a desirable place to live.

Don't miss out on the chance to own this wonderful apartment in Solomons Court. Book a viewing today and envision the possibilities that this property holds for you!

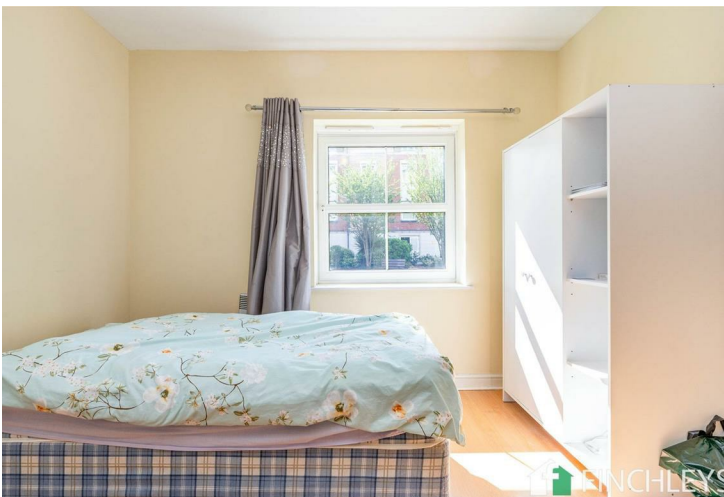
Solomons Court, High Road,
London, N12

£285,000

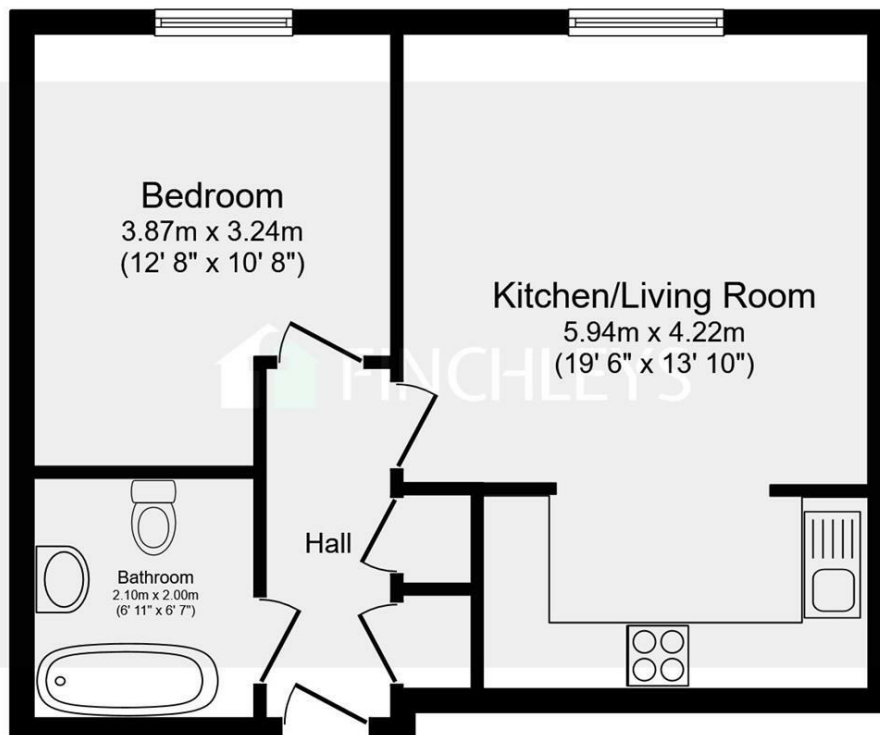


**FINCHLEYS
ESTATES**

CLIENT FOCUSED. RESULTS DRIVEN.



- CHAIN FREE
- MODERN GATED DEVELOPMENT
- ALLOCATED OFF STREET PARKING FOR 1 CAR
- IDEAL FOR FIRST TIME BUYERS OR INVESTORS



Total floor area 45.8 m² (493 sq.ft.) approx

This floor plan is for illustrative purposes only. It is not drawn to scale. Any measurements, floor areas (including any total floor area), openings and orientation are approximate. No details are guaranteed, they cannot be relied upon for any purpose and they do not form part of any agreement. No liability is taken for any error, omission or misstatement. A party must rely upon its own inspection(s).
 Powered by www.focalagent.com



11 STATION ROAD
FINCHLEY
LONDON
N3 2SB
02083461180