



Finchleys are pleased to offer this spacious first floor two bedroom maisonette with private rear garden (accessible from steps leading down from the kitchen) situated within a purpose built building in the heart of Arnos Grove, with access to loft for storage located within a 5 minute walk to tube station (Piccadilly Line).

Additional benefits include communal gardens to the front and an en-bloc garage included in the sale which is on a separate lease - 26 years left unexpired.

The property is situated on a residential road close to local shops and amenities. There is a children's park and play area next door to the building. Transport links are provided by Arnos Grove underground station (Piccadilly line) and New Southgate rail station.

Long Leasehold -182 year unexpired lease.

Local Authority: Enfield Council

Cedar Court, Upper Park  
Road, London, N11

£350,000

Offers In The

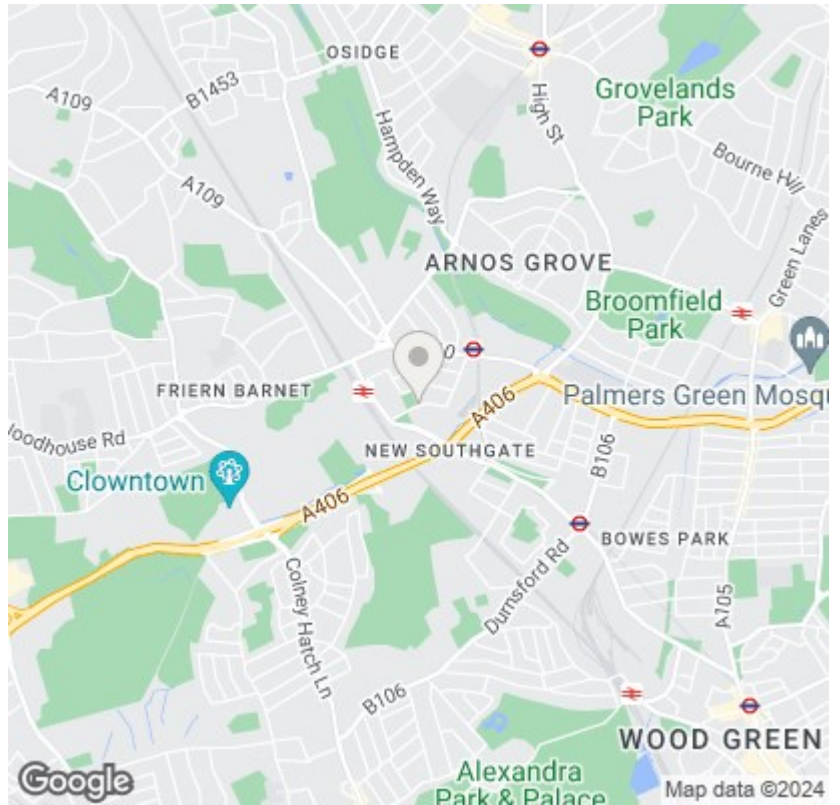
2  1  1  D 



**FINCHLEYS  
ESTATES**  
CLIENT FOCUSED. RESULTS DRIVEN.

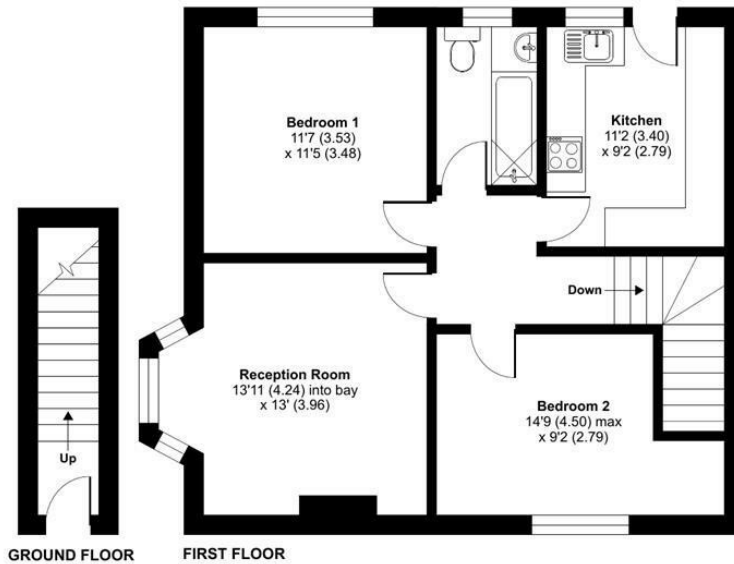


- Two Double Bedrooms
  - Garden
  - Kitchen
  - Bathroom
  - Loft Access
- Close to Arnos Grove Tube
- Long Lease - 150 Years Unexpired
  - Sole Agents



### Cedar Court, Upper Park Road, London, N11

Approximate Area = 733 sq ft / 68 sq m  
 For identification only - Not to scale



Floor plan produced in accordance with RICS Property Measurement Standards incorporating International Property Measurement Standards (IPMS2 Residential). ©richecom 2023. Produced for Finchleys Estates. REF: 948410





11 STATION ROAD  
FINCHLEY  
LONDON  
N3 2SB  
02083461180