

Westminster Palace Gardens, Artillery Row,
Westminster SW1

 Chase Evans

THREE BEDROOMS

FIRST FLOOR

SPACIOUS APARTMENT

CLOSE TO TRANSPORT LINKS

CLOSE TO HOUSES OF PARLIAMENT

AVAILABLE: 09/11/2017

Set on the first floor of a period building in the heart of London, this is a large apartment comprising a spacious reception open plan with a contemporary and fully fitted kitchen and three bedrooms, one of which is with an en suite bathroom. The property is a short distance away from Victoria, St James's Park and Westminster Underground stations.

£765 per week

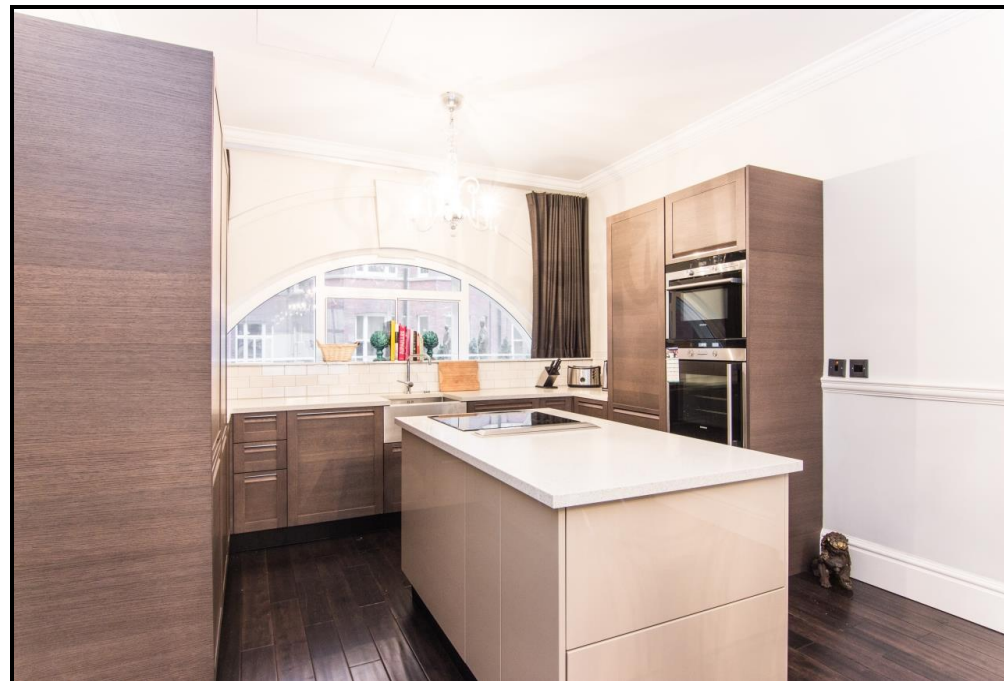


 Chase Evans

Chase Evans Residential Limited - Elephant and Castle Office: 5 St Gabriel Walk, London, SE1 6FS
T: 020 3869 2888 E: onetheeelphant@chaseevans.co.uk

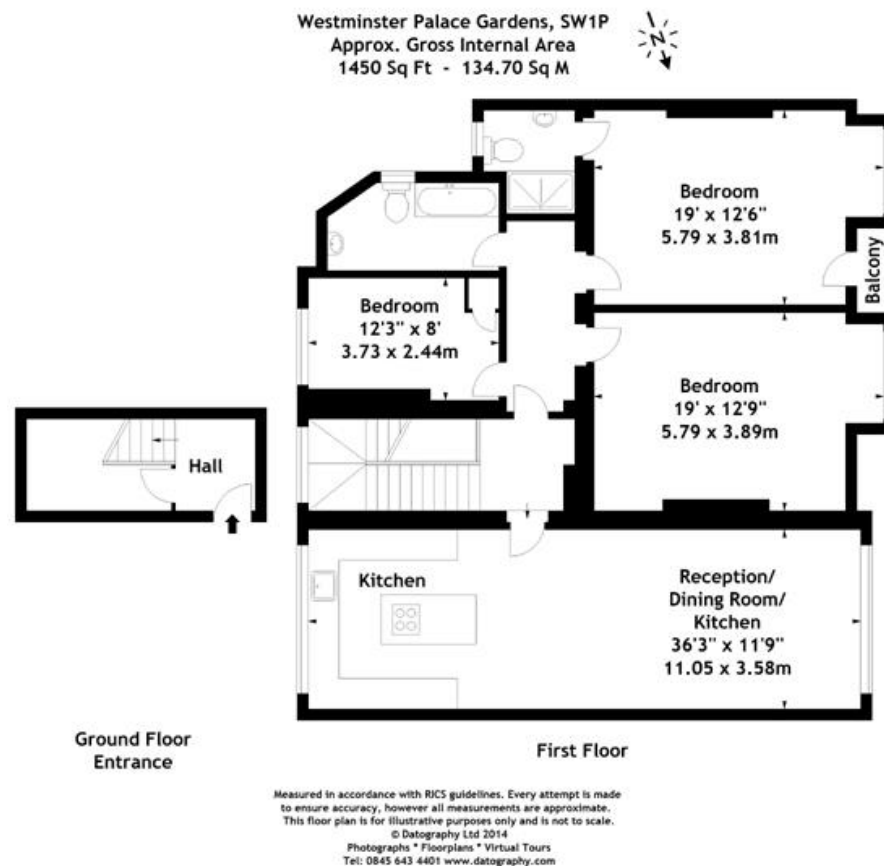
**WESTMINSTER PALACE GARDENS, ARTILLERY
ROW, WESTMINSTER SW1**

£765 per week



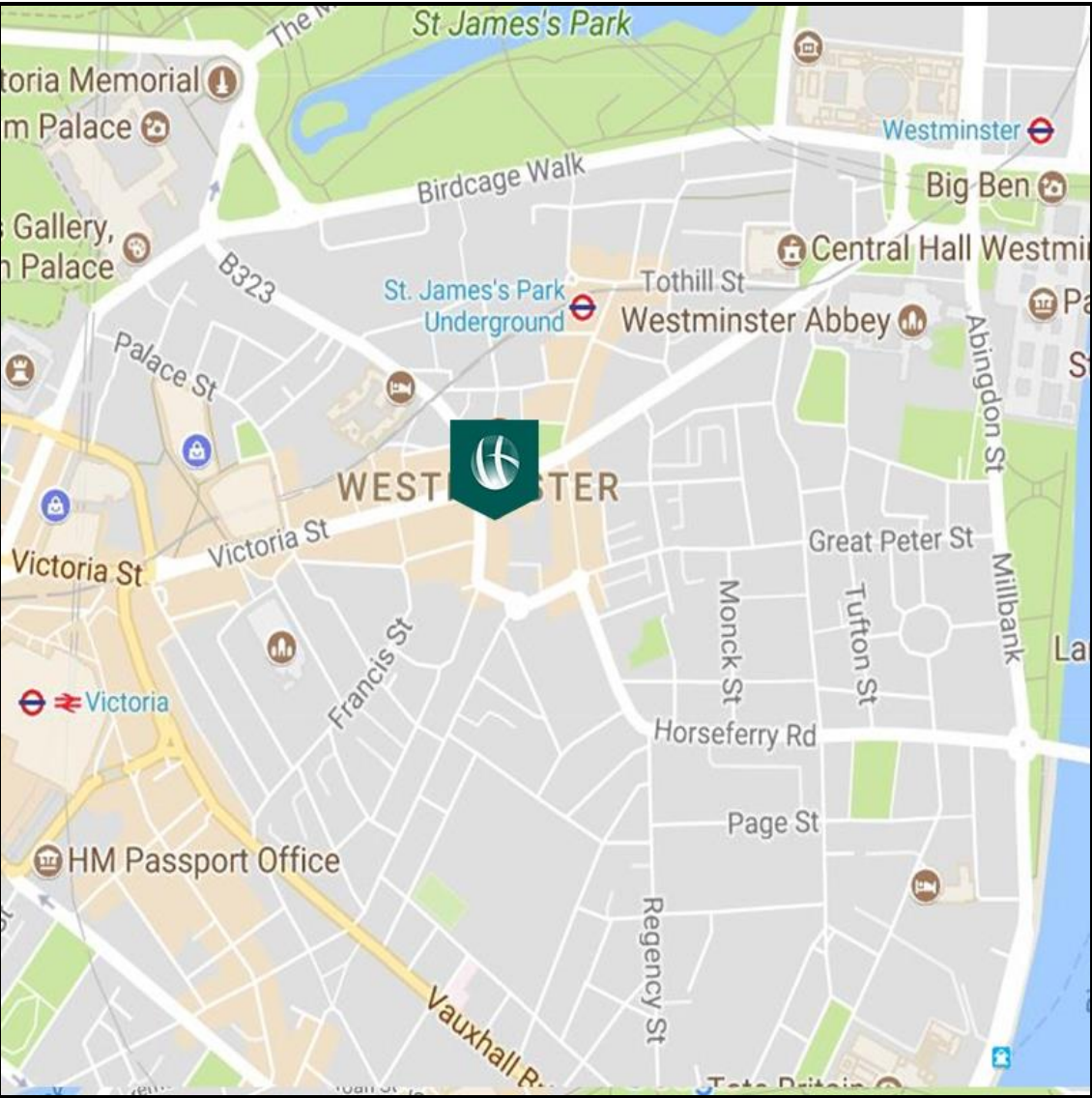
WESTMINSTER PALACE GARDENS, ARTILLERY ROW, WESTMINSTER SW1

£765 per week



WESTMINSTER PALACE GARDENS, ARTILLERY
ROW, WESTMINSTER SW1

£765 per week



| Energy Efficiency Rating | | | Environmental Impact Rating | | |
|--|---------|-----------|--|---------|-----------|
| | Current | Potential | | Current | Potential |
| Very energy efficient - lower running costs | | | Very environmentally friendly - lower CO ₂ emissions | | |
| (92-100) A | | | (92-100) A | | |
| (81-91) B | | | (81-91) B | | |
| (69-80) C | 74 | 74 | (69-80) C | 73 | 73 |
| (55-68) D | | | (55-68) D | | |
| (39-54) E | | | (39-54) E | | |
| (21-38) F | | | (21-38) F | | |
| (1-20) G | | | (1-20) G | | |
| Not energy efficient - higher running costs | | | Not environmentally friendly - higher CO ₂ emissions | | |
| England & Wales | | | England & Wales | | |
| EU Directive 2002/91/EC | | | EU Directive 2002/91/EC | | |
| The energy efficiency rating is a measure of the overall efficiency of a home. The higher the rating the more energy efficient the home is and the lower the fuel bills will be. | | | The environmental impact rating is a measure of a home's impact on the environment in terms of carbon dioxide (CO ₂) emissions. The higher the rating the less impact it has on the environment. | | |

View Property

Contact Information:

Elephant and Castle Office

5 St Gabriel Walk, London, SE1 6FS

Tel: 020 3869 2888

Email: onetheelephant@chaseevans.co.uk